

/(78926 5(638%/ ,.26 ä(0 6 Æ.,2 0,1,67(5,-\$
9² ä(0 6 Æ.,2 ,1)250\$&,-26 ,5 .\$.02 9(56/2 &(175\$6
/,(78926 ä(0 6 Æ.,2 ,5 0\$,672 352'8.7Ï 5,1.26 ,1)250\$&,1 6,67(0\$

Agro RINKA

,661

'9,6\$9\$,7,1,6 2),&,\$/86,6 ,1)250\$&,1,6 67\$7,67,1,6 /(',',1

P NRYR G

1 U

785,1 < 6



3LHQR LU SLHQR JDPLQLÐ ULQN



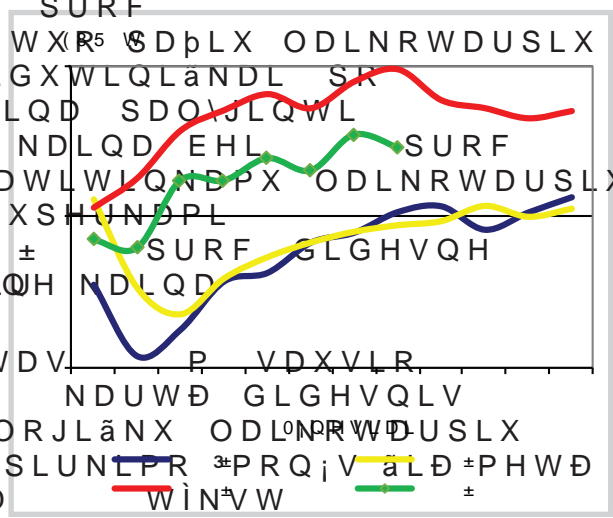
*UÏGÐ UDSVÐ SDãDUÐ LU V;NOÐ ULQND NOYLD GDUãRYLD LU YDLVLD U
.LDXOLHQRV MDXWLHQRV LU DYLHQRV HËKQNDRV ULQND



3DXNãWLHQRV LU NLDXãLQLÐ ULQND 0DLVWR SURGXNWÐ PDãPHQLQ; i

*UÏGÐ UDSVÐ SDãDUÐ LU V;NOÐ ULQND

/LHWXYRMH P YDVDULRN DQDURMH SXV5MM
GDXJHOLR JUÏGÐ VXSLUNLPR NDLQD ÆLãNLNSR EWDNLN P VDX
QHSDNLWXLXRYRV JUÏGÐ VXSLUNLPR³PRQ;V MÏNVW W ± SURF
P VDYDLW NYLHþLYR P VDXVLR,ãP NDLHþLD HNVSRL
VXSHUNDPL YLGXWLQLãNDL SR LQDP VDXVLR P;QHVS³ VXGDU; GDX
EXYR WLN SURF GLGHVQ; QHJXWISULHãWDY3DPLQDQDORJLãN
VDYDLW ± LU SURF DLNRWDUSLX;LQHNLHþLD HNVSRLV
SULHã PHWXWDYDLW 3DãDULQLQNDUWDLV GLGHVQLV .YLHþLDL
PLHãLD ,, NODV;V YLGXWLQ; VXSLUNLPR NDLQDtesinys 4 psl.
VDYDLW SDOJLQWL VX SUD;MXVL VDYDLW EXYXVLD
NDLQD EXYR SURF EHL SURF
PDãHVQ; QHJX SULHã PHWXV WXR⁵ SDPLX ODLNRWDUSLX
.YLHWUXEYR VXSHUNDPL YLGXWLQLãNDL SR
(85 W ± SURF PDãHVQH NDLQD SDOJLQWL
VX SULHã VDYDLW EXYXVLD NDLQD EHL SURF
SLJLDX QHJX SULHã PHWXV DWLWLQNDPX ODLNRWDUSLX
\$QDOLJXRMDPXU DSVNRVEXVSLXSHUNDPL
YLGXWLQLãNDL SR (85 W ± SURF GLGHVQH
NDLQD QHJX SURF EHL NDLQD
QHJX SULHã PHWXV



/LHWXYRV UDSVÐ HNVSRLVWDLV P VDXVLR
P;QHVS³ EXYR GDXJLDX NDLS NDUWÐ GLGHVQLV
QHJX SUD;MXVLÐ PHWÐ DQDORJLãNX ODLNRWDUSLX
/LHWXYRV JUÏGÐ LU UDSVÐ VXSLUNLPR³PRQ;VãLD±PHWÐ
VDXVLR P;QHVS³ HNVSRLVWDSVÐ WÏNVW
- GDXJLDX NDLVWÐ GLGHVQ³ NDLNBERSDOJLQWLULR P;Q NDLQD ± ± V
VX P VDXVLR P;QHVS³ HNVSRLVWXRWLNLHNLX LWL GUIJQLV ± QHUL
LãYHãWL³ /DWYLM 9RNLHWLM LU 1\GHUODQDQXWÉQLãGãW3Q;



*UÏGÐ LU UDSVÐ YLGXWLQ;V VDYDLW V;V Q;V V;V S;V N;V P;V R;V LQRV /LHWXYRMH (85 W EH 390

*UÏGDL	'DWD												3RN\WLV											
	VDY				VDY				VDY				VDYDLW;V				PHWÐ							
	EH	13VX	13EH	13VX	EH	13VX	13EH	13VX	EH	13VX	13EH	13VX	EH	13VX	13EH	13VX	EH	13VX	13EH	13VX				
.YLHþLDDL																								
HNVWUD																								
, NODV;V																								
,, NODV;V																								
,,, NODV;V																								
,9 NODV;V																								
5XJLDDL	"	"						"	"							-	-			-	-			
, NODV;V		"		"	"			"	"		"	"												
,, NODV;V								"	"															
0LHåLDDL																								
, NODV;V			"	"				"	"		"	"												
,, NODV;V																								
VDO\NOLQLDDL			"	"				"	"		"	"												
\$YLåRV																								
*ULNLDDL			"	"				"	"		"	"												
.YLHWUXJLDDL																								
.XNXU;JDDL																								
åLUQLDDL			"	"																				
3XSRV	"	"								"	"													
5DSVDL																								

NDLQD EH QXRVDNLWÐ SULHå YDO\ P LU GåLRYLQLP LU SULHåPRN;V /åË035,6
 NDLQD VX QXRVDNLWRPLV SR YDO\ PR LU GåLRYLQLPR LU SULHPRNRPLV
 O\JLQDQW P VDYDLW VX VDYDLWH
 O\JLQDQW P VDYDLW VX P VDYDLWH
 " ± NRQ;GHQFLDO;V GXRPHQ;V
 3DVWDED *UÏGÐ EHL UDSVÐ LU VDYDLþLÐ VXSLUNLPR NDLQRV SDWLVNVLQWRV

*UÏGÐ LU DOLHMLQLÐ DXJDOÐ V;NOÐ VXSLUNLPDV /LHWXYRV

*UÏGDL	'DWD												3RN\WLV											
	VDXVLV						ODSNULWLWUXRGLV						VDXVLV						P;QHVL R PHWÐ					
.YLHþLDDL																								
HNVWUD																								
, NODV;V																								
,, NODV;V																								
,,, NODV;V																								
,9 NODV;V																								
VSHOWD																								
5XJLDDL																								
, NODV;V																								
,, NODV;V																								
0LHåLDDL																								
, NODV;V																								
,, NODV;V																								
VDO\NOLQLDDL																								
\$YLåRV																								
*ULNLDDL																								
.YLHWUXJLDDL																								
.XNXU;JDDL																								
åLUQLDDL																								
3XSRV																								
\$OLHMLQLÐ DXJDOÐ V;NORV																								
5DSVDL																								
/LQÐ V;PHQ;V																								
,å YLVR																								

O\JLQDQW P VDXVLR P;Q VX P JUXRGåLR P;Q åDOWåEQ;V /åË035,6
 O\JLQDQW P VDXVLR P;Q VX P VDXVLR P;Q



*UİĞĐ LU DOLHMLQLĐ DXJDOĐ VİNOĐ SHUGLUELPDV /LH
 /LHWXYRMH (85 W EH 390)

*UİĞĐL	'DWD					3RNİWLV				
	VDXVLV	ODSNULWLWUXRGLV	VDXVLV	PİQHVLV	PHWĐ	VDXVLV	ODSNULWLWUXRGLV	VDXVLV	PİQHVLV	PHWĐ
.YLHıLDL										
HNWUD										
, NODVİ										
,, NODVİ										
,,, NODVİ										
,9 NODVİ										
5XJLDL										
, NODVİ										
,, NODVİ										
0LHâLDL										
, NODVİ										
,, NODVİ										
VDO\NOLQLDL										
\$YLâRV										
*ULNLDL										
.YLHWUXJLDL										
.XNXUİİJDL										
âLUQLDL										
3XSRV										
5DSVDL										

NDLQD EH QXRVNDLWĐ SULHâ YDOİP LU GâLRYLQLP LU SULHâDOWİEQİW& /âË035,6
 NDLQD VX QXRVNDLWRPLV SR YDOİPR LU GâLRYLQLPR LU SULHPRNRPLV
 OİJLQDQW P VDXVLR PİQ VX P JUXRGâLR PİQ
 OİJLQDQW P VDXVLR PİQ VX P VDXVLR PİQ
 " ± NRQİGHQFLDOİV GXRPHQİV

*UİĞĐ LU DOLHMLQLĐ DXJDOĐ VİNOĐ SHUGLUELPDV /LH

*UİĞĐL	'DWD					3RNİWLV				
	VDXVLV	ODSNULWLWUXRGLV	VDXVLV	PİQHVLV	PHWĐ	VDXVLV	ODSNULWLWUXRGLV	VDXVLV	PİQHVLV	PHWĐ
.YLHıLDL										
HNWUD										
, NODVİ										
,, NODVİ										
,,, NODVİ										
,9 NODVİ										
VSHOWD										
5XJLDL										
, NODVİ										
,, NODVİ										
0LHâLDL										
, NODVİ										
,, NODVİ										
VDO\NOLQLDL										
\$YLâRV										
*ULNLDL										
.YLHWUXJLDL										
.XNXUİİJDL										
âLUQLDL										
3XSRV										
5DSVDL										
/LQĐ VİPHQİV										
,â YLVR										

OİJLQDQW P VDXVLR PİQ VX P JUXRGâLR PİQ âDOWİEQİW& /âË035,6
 OİJLQDQW P VDXVLR PİQ VX P VDXVLR PİQ P VDXVLR PİQ



*UÏGÐ LU DOLHMLQLÐ DXJDOÐ V;NOÐ DWVDUJRV /LHW

*UÏGDL	'DWD		3RN\WLV	
	VDXVLV	ODSNULWLWXRGLV	VDXVLV	P;QHVLR PHWÐ
.YLHþLDL				
HNWUD				
, NODV;				
,, NODV;				
,,, NODV;				
,9 NODV;				
VSHOWD				
5XJLDL				
, NODV;				
,, NODV;				
0LHåLDL				
, NODV;				
,, NODV;				
VDO\NOLQLDL				
\$YLåRV				
*ULNLDL				
.YLHWUXJLDL				
.XNXU;JDL				
åLUQLDL				
3XSRV				
5DSVDL				
/LQÐ V;PHQ\				
,å YLVR				

DWVDUJRV DWLWLQNDPR P;QHVLR SDEDLJRMH åDOVåEQ L9& /åË035,6
 ** O\JLQDQW P VDXVLR P;Q VX P JUXRGåLR P;Q
 O\JLQDQW P VDXVLR P;Q VX P VDXVLR P;Q

VNDLþLÐ åDOLÐ /DWYLM 9RNLFVHM³ 'SDOMLQVRUWXJDSOLM MXVL
 ,VSDQLM ,WDOLM 7XUNLM LODLNJWUDMSLXLGXVPLDå; MRLQD S
 ± (85WHåHNDVSRUWDV P VDXVLR -RV LåYHåWRV³ /DWYLM
 P;QHVS³ SDO\JLQDQWDXWX EXYR 9RNåLHWQLW YLGXWLQ; NDLQD ±
 SURF LU VXDGU; WINVW WP'LGåDXMLQDOP;QHVS³ HN
 HNVSRUWXRWÐ PLHåLÐ SURF WIXVWå;USDåDLQLDSURF GL
 ,, NODV;V 0PHåDDLEXR HNVSURUWXRWE³VDXVLR P;QHVS³ -LH
 /DWYLM /HQNLM (VWLM LU (HQSMLM YLGXVILQ; NDLQD åHUODQG
 (85 \$YLåÐ LåYHåLPDV P VDXVLR

*UÏGÐ SURGXNWÐ SDU;NOÐ PRLNMLXQRMH (85 W EH 390

3URGXNWDL	'DWD		3RN\WLV	
	VDXVLV	ODSNULWLWXRGLV	VDXVLV	P;QHVLR PHWÐ
.YLHWLQLDL PLOWDL				
DXNåþLDXVLRV U;åLHV				
SLUPRV U;åLHV				
5XJLQLDL PLOWDL				
åYHLVWLQLDL			"	
6;OHQRV				
NYLHþLÐ				
UXJLÐ		"	"	
.UXRSRV				
NYLHþLÐ			"	
PLHåLÐ		"	"	
SHUOLQ;V	"	"	"	
JULNLD				
'ULEVQLDL				
DYLåÐ				
JULNLD		"	"	
5DSVÐ DOLHMXV				
ELRNXR JDP\EDL		"	"	

YLGXWLQ;V VYHUWLQ;V NDLQRV åDOVåEQ L9& /åË035,6
 O\JLQDQW P VDXVLR P;Q VX P JUXRGåLR P;Q
 O\JLQDQW P VDXVLR P;Q VX P VDXVLR P;Q
 " ± NRQ;GHQFLDO;V GXRPHQ;V



'XRQRV JDPLQLĖ SDUGDYLPR NDLQRV gamintojų /LHWXYRMH (85

	VDXVLV			3RN\WLV		
	ODSNULWLX	WXRGLV	VDXVLV	PjQHVL	RPHWĖ	
5XJLQj GXRQD						
tamsi	954,43	967,83	951,40	937,10	-1,50	-1,82
EH SULHGĖ VX SULHGDLV						
šviesi	901,98	938,78	924,98	933,13	0,88	3,45
EH SULHGĖ VX SULHGDLV						
.YLHWLQj GXRQD						
batonas	852,11	838,66	847,71	842,77	-0,58	-1,10
EH SULHGĖ VX SULHGDLV						
sumuštinų duona	1 094,76	1 019,93	1 029,10	1 020,45	-0,84	-6,79
EH SULHGĖ VX SULHGDLV						
kita	1 440,14	1 442,35	1 358,62	1 374,52	1,17	-4,56
EH SULHGĖ VX SULHGDLV						

YLGXWLQjV VYHUWLQjV NDLQRV âDOWĒLQ& /ăĒ035,6
 O\JLQDQW P VDXVLR PjQ VX P JUXRGâlR PjQ
 O\JLQDQW P VDXVLR PjQ VX P VDXVLR PjQ

86'\$ NYLHplĖ GHUOLDXV SURJQR] WSPDâHVQLV HNVSRUWV
 VDXO\MH VXPdâlQR ± SDGLGĀLQWD POQ W LNL 3DNLVWDQR .YLHplĖ L
 P YDVDULR PjQ DWQDXMLQWRVP -\$9 XHJWLQV VVGDU\WL
 ĪNLR GHSDUWDPHQWR WROLDĪLWĖ POQ W SDXJQR] QHJX EXYR S
 GXRPHQLPLV ± P NYLHplĖ GHUOLDXV VLVHplĖ LPSRUWR
 SURJQR]i SDVDXO\MH SDO\JLSDGLGLXQV SDGLHĀLQWMLP 3 LU PO
 EXYXVLD SURJQR]H VXPdâlQRV VDXVLR PjQHMLR SURJQR]iM
 POQ W R VXQDXGRMLP SDVDXOLQWDQYWHĀLNL VXQDXGRML
 POQ W P SDEDLJRMH DWVDUJRV
 .YLHplĖ HNVSRUWV SDVDXO\MH SDEDLJRMH YLV WLHN WXU
 WXUjWĖ VVGDU\WL POQ WXGDU\WĒLWĖ PPOQW
 GDXJLDX QHJX EXYR SURJQR]XRWD PSUMĀDR]QHV PjQ 86'\$ SU
 .YLHplĖ HNVSRUWR SURJQR]i GXREHQLPLV (6 ± P SDVDXO\
 SDGLGLQWD POQ W LNL POQ XWĪ]Ė OVSDUGĀLĖ; NXLĀLĖ U X
 NDLQĖ NRQNXUHQLQJXPORQ WDĪĖĖWĖDĀLQĖ GHUOLXV SDO\
 LNL POQ W 3URJQR]XRMDPVDNĀGRN PjĖĖLSDURNQSRHUWVWXUjWĖ
 Lă -\$9 JDOL SDGLGĀLW POQ WNLU WDLĖPĖGLGĀLXNLĀLĖ GH
 MĖ HNVSRUWV SHU SDVNXLWSDXDXOUMHXĖ; P HVXHWĖLQjULNRM
 HNVSRUWR SDGLGĀLMLP Lă GDGHUOLVQXVĖRĖ NRPSXQLXRWLWR S

tesinys 7 psl.

3DVDXOLQjV JUĪĖĖ HNVSRUWR NDLQRV (85 W

*UĪGDL	9DOVW\Ej	VDXVLV			3RN\WLV		
		VODSNULWLX	WXRGLV	VDXVLV	PjQHVL	RPHWĖ	
.YLHplĖ	LĖĪ +5: NDW -\$9 65: NDW \$UJHQWLQD (6 3UDQFĪLMD)&: (6 9RNLHWMMD % NODVj 8NUDLQD SDâDULQLDL .DQGD &:56 EDOW\pĖ .XNXUjĪ LĖĪ <& \$UJHQWLQD OLHĀLĖ (6 3UDQFĪLMD SDâDULQLDL \$XVWUDOLMD SDâDULQLDL \$XVWUDOLMD VDO\NOLQLDL						

+5: ± Hard Red Winter 65: ± Soft Red Winter)&: ± French Channel WĒĪĖ ± Canada Western Red Spring & ± Yellow Corn
 * O\JLQDQW P VDXVLR PjQ VX P JUXRGâlR PjQ
 O\JLQDQW P VDXVLR PjQ VX P VDXVLR PjQ âDOWLQLV \$0\$



*UĪĢĻU UDSVĒ YLĀGĀJĀ QĪVĀ ADDĀVĪV (85 W)

9DOV\Ēj	DWD					3RN\WLV	
	VDY ±	VDY ±	VDY ±	VDY ±	VDY ±	VDYDLWj	PHWĢ
ODLVWLQLDL NYLHĢLDL							
%HOJLMD %XOJDULMD ýHNLMD 9RNLHWLMD *UDLNLMD ,VSDQLMD 3UDQFĪjLMD .URDWLMD ,WDOLMD /DWYLMD /LHWXYD 9HQJULMD \$XVWULMD /HQNLMD 3RUWXJDOLMD 5XPXQLMD 6ORYjQLMD 6ORYDNLMD 6XRPLMD âYHGLMD -XQJWLQj .DUDO\WVj							
3DāDULQLDL NYLHĢLDL							
%HOJLMD %XOJDULMD 9RNLHWLMD (VWLMD *UDLNLMD \$LULMD /DWYLMD /LHWXYD 9HQJULMD 2ODQGLMD \$XVWULMD /HQNLMD 3RUWXJDOLMD 5XPXQLMD 6ORYDNLMD -XQJWLQj .DUDO\WVj							
3DāDULQLDL PLHāLDL							
%HOJLMD %XOJDULMD 9RNLHWLMD (VWLMD *UDLNLMD ,VSDQLMD 3UDQFĪjLMD .URDWLMD \$LULMD ,WDOLMD .LSUDV /DWYLMD /LHWXYD 2ODQGLMD \$XVWULMD /HQNLMD 3RUWXJDOLMD 5XPXQLMD 6XRPLMD -XQJWLQj .DUDO\WVj							

lentēls tēsinys 7 psl.



6 psl. lentelės tęsinys

9DOVW\E;	DWD					3RN\WLV	
	VDY ±	VDY ±	VDY ±	VDY ±	VDY ±	VDYDLW;PHWÐ	
ODLVWLQLDL UXJLDL							
9RNLHWLMD (VWLMD /DWYLMD /LHWXYD \$XVWULMD /HQNLMD	-		-	-	-	-	-
5DSVDL							
9RNLHWLMD (VWLMD /DWYLMD /LHWXYD /HQNLMD			-				

O\JLQDQW P VDYDLW VX VDYDLWH āDOWLQLDL āĒ,.9& /āĒ035,6 (. \$0, =65,5
 O\JLQDQW P VDYDLW VX P VDYDLWH
 3DVWDED /LHWXYRV PDLVWLQLÐ LU SDāDULQLÐ NYLHþLÐ SDāDULQLÐ PLHāLÐ PDLVWLQLÐ

NLHNLV SDGLGLQWD POQ SDGLGLQWD GDXJLDX QHL NRPSHQF\$RUMDSU R\JQRJXR MSDPGLG;WL³
 GLGHVQLV NXNXUI]Ð GHUOLXV NXNXUI]Ð EL MRMHVSRUNWDL SRMRHQQR]i
 WXU;WÐ GDXJLDX QHL NRPSHQF\$RUMDSU R\JQRJXR MSDPGLG;WL³
 PDāHVQ³ NXNXUI]Ð GHUOLD 9LH%UDD]PELMRMH GLGHVQ;V NXNXUI]Ð
 3DVDXOLQ; ± P NLWÐSJULIGVDMNWSRUSLRHWLQ;MH MRV G
 SURJQR]i YDVDULR P;Q SDOJVLXQQLQLQ\SWL;Hā WDL GHUOLDX
 EXYXVLX P;Q EHYHLN QHSDNNWRDLJUIGVUDWÐDVSU R\JQR]i V
 POQW R NLWÐ JUIGÐ VXXQ;VGRMKBW\WL POQ W ,
 DQDOL]XRMDPX ODLNRWDUSLX SJDRJQF]P GLXP;DVL QWDPQQ PQQ W
 LNL POQ W .NXNXUI]Ð GDSRXLVLDISURHWQ]DPH %UD]LOLI
 SDGLGLQWD 3LHWÐ \$IULNDL 8NUDLQLDL āDOWLQLDL EHW.ā³āĒ035,6 LU

\$WHLWLHV VDQGRULÐ NYLHþLÐ NXNXUI]Ð LU UDSVÐ NDLQRV WDUSW

*UIGLQ;NXO	WULW	WDW\PRVDY	VDY ±	VDY ±	VDY ±	VDY ±	6DYDLW;V NDLQR
ELUāD	P;QXR						SRN\WLV
ODLVWLQLDL NYLHþLDL							
0\$7,)	NRYDV JHJXā; UXJV;MLV JUXRGLV NRYDV						
3DāDULQLDL NYLHþLDL							
/,))(NRYDV JHJXā; OLHSD ODSNULWLV VDXVLV NRYDV						
.NXNXUI]DL							
0\$7,)	NRYDV ELUāHOLV UXJSMiWLV ODSNULWLV VDXVLV						
5DSVDL							
0\$7,)	JHJXā; UXJSMiWLV ODSNULWLV YDVDULV JHJXā;						

/,))(London International Financial Future Exchange 'LGāLRML %ULWDLQMDL D\$7Futures and Options Exchange 3UDQF]LMD
 NDLQRV (85 SDWHLNWRV SDJDO DWLWLQNDPRV GDWRV (&% YDOLXWÐ NXUV
 O\JLQDQW P VDYDLW VX VDYDLWH
 3DVWDED .DLQRV QXURGRPRV)2% V O\JRPLV āDOWLQLV 7DUSWDXWL



\$.0 ³WDNRMR SDVDXOLQ³ SLDNDUD JDPQERW 3R \$.0 SURWUÏ
 DSLPpLÐ PDÄ;MOWHFK³ GXRPHQVLRNWRULXV Q;UD YLVLÄNDL DWVL
 SDVDXOLQ; NRPELQXRWÐMÐ SDÄDUD QDPLVÐ LVLHX;VWDEGIWDEV
 PLOLMDUGXV W LU SDO\JLQWLDXUÐ NÐDXOXPDÄ;MOWHFK³ P
 SURF DUED POQ W 7DLN SSRUPVR SDVDXOLQ;VDV äDOLV
 NRPELQXRWÐMÐ SDÄDUD \$RP\ERVN\WXPDA;MLPÄYVM³ MHL \$.0 QH
 SDVWDUDMÐ GHY\QHULÐ PHW\RNLDXJLPRNLÐXOLERQV LU NLDX
 VXPDA;MLP GDXJLDXVLDL QXO\SLIP\XMDQPHRVAHSÄDOWH NDLS
 NLDXOLÐ PDUDV \$.0 NXU NRPELQXRWÐMÐ SDÄDUD
 JDP\ED SDO\JLQWL VX P VXPDA;MLP SURF
 %HQGUDL SDVDXOLQ; NLDXOLÐ SDÄDUD JDP\ED SHUQODI
 NULWR SURF WDP\LDX GLG\EMR\OHYDUDXV\INLQLOQNDYLU SR
 EURLOHULDPV EHL SDÄDUD DNY\RNXOWIURBMDLU SDÄDUD LU J\YXOI
 DXJLQWLQLDPV JDP\ED JDP\EDL ³WDNRV WXU;V LU .LQLM
 1HÄLÌULQW GLG;MDQP\LR (6 OHPLDOWLV GDOLQ³ DWYLULERML
 NHOLV PHWXV GLG;MXVL NLDXOLÐ HLOD\GLGHOI GDOLV LPSRUWR LU
 SDO\JLQWL VX P VXPDA;MLP SURF SEJLV\GDUER M;JRV JDP\EDL
 SUHNLÐ

äDOWLQLDL \$OWHFK LU

.RPELQXRWÐMÐ SDÄDUD LU SUHPLNVÐ JDP\ED /LHWXYR

.RPELQXRWLHML SDÄDUDL 3*3. NRGDV	VDXVLR	DSNUUWXRGLWDXVPEYQHVERWÐ	3RN\WLV
ËNLQLÐ J\YIÐ SDÄDUD SUHPLNVDL			
0LälQLDL LävNIUXV SUHPLNVXV ± äHUWL	ÏNLQLDPV J\YIQDPV ± NLDXO;PV		
0LälQLDL LävNIUXV SUHPLNVXV ± äHUWL	ÏNLQLDPV J\YIQDPV ± JDOYLMDPV		
0LälQLDL LävNIUXV SUHPLNVXV	QDPLQLDPV SDXNäpLDPV OHVLQWL		
.LWL QLHNXU NLWXU QHSULVNLUWL PLälQLDL LävNIUXV SUHPLNVXV ÏNLQLDPV J\YIQDPV äHUWL			
äXQÐ ;GDODV VNLUWDV PDäPHQLQHL SUHN\EDL			
.DpLÐ ;GDODV VNLUWDV PDäPHQLQHL SUHN\EDL			
0LälQLDL J\YIÐ DXJLQWLQLÐ ;GDOXL LävNIUXV NDpLÐ DUED äXQÐ ;GDO VNLUW PDäPHQLQHL SUHN\EDL			

,ä YLVR
 O\JLQDQW P VDXVLR P;Q VX P JUXRGÄLR P;Q äDOWLQLV äË,.9& /äË035,
 O\JLQDQW P VDXVLR P;Q VX P VDXVLR P;Q
 SDWLNVLQWL PLälQLÐ QDPLQLDPV SDXNäpLDPV LU JDOYLMDPV GXRPHQIV

*UÏGÐ VXQDXGRMLPDV NRPELQXRWÐMÐ SDÄDUD LU SUHPLNV

			3XVPHpLR OHWÐ SRN\WLV SRN\WLV
		\$QNäWLQLDL	
äLUQLDL 3XSRV /XELQDL .LWL DQNäWLQLDL ,ä YLVR			
		9DUSLQLDL	
.YLHpLDDL LU PHVOLQDV 5XJLDL 0LHäLDL \$YLäRV .XNXU;JDL *ULNLDL .YLHWUXJLDL .LWL MDYDL LU MÐ PLälQLDL ,ä YLVR			
		\$OLHMLQLDL	
5DSVDL /LQÐ V;PHQIV			

O\JLQDQW P , SXVPHW³ VX P , SXVPHpLX O\JLQDQW DOWLQLV, äË,9& /äË035,

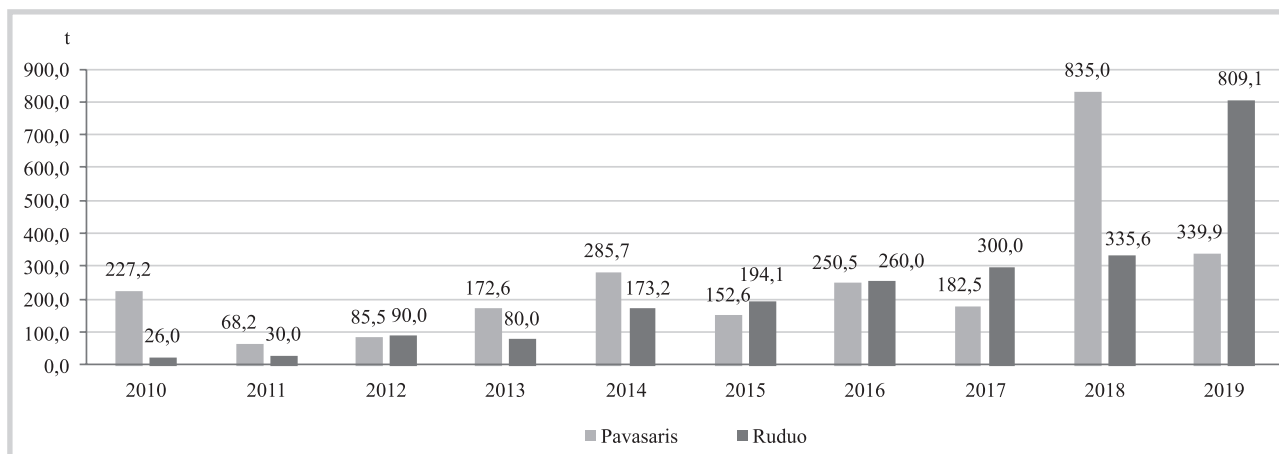


/LHWXYRMH DSUREXRWL HNRORJLQLDL āHPĪV ĪNLR DXJDOĖ

\$XJDOĖ JUXSĪ	\$XJDOR UĪāLV	FHQGUBMQGUDPHWĖ					SORWDV SDJDO SULSDāLQWDV ND							
		DSUREXRWL SORWDSORW	DSUREXRWL SORWDSORW	DSUREXRWL SORWDSORW	DSUREXRWL SORWDSORW	DSUREXRWL SORWDSORW	\$	B	&	&	&			
	\$YLāRV QHWNāĪV													
	6ĪMDPRVLRV DYLāRV SOLNRVLRV													
	6ĪMDPRVLRV DYLāRV													
	6ĪMDPLHML UXJLDL													
	6SHOWD													
-DYDL	9DVDULQLDL NYLHĵLDL													
	9DVDULQLDL NYLHWUXJLDL													
	9DVDULQLDL PLHāLDL													
	āLHPLQLDL NYLHĵLDL													
	āLHPLQLDL NYLHWUXJLDL													
	6ĪMDPLHML JULNLDL													
	%DOWLHML GRELODL													
	%LWLQĪV IDFHOLMRV													
	(UDLĵLQVYLGUĪV													
	+LEULGLQĪV VYLGUĪV													
	*DXVLDāLHGĪV VYLGUĪV													
	0ĪO\QāLHGĪV OLXFHUQRV													
	3DSUDVWRVLRV āXQDāROĪV													
	3DāDULQLDL PRWLHMXNDL													
3DāDUĖDULQLDL	ULGLNDL													
DXJDOĖ	DXSRV													
	5DXGRQLHML GRELODL													
	5XJLQLDL YLNLDL													
	6ĪMDPLHML HVSDUFHWDL													
	6ĪMDPLHML YLNLDL													
	6ĪMDPLHML āLUQLDL													
	6LDXUDODSLDL OXELQDL													
	7LNULHML HUDLĵLQDL													
	9HQJULQLDL YLNLDL													
	%DOWRVLRV JDUVW\ĵLRV													
\$OLHMLQDL	ĵVWLHML NP\QDL													
SOXRāWLQDL	ĵLQDL													
DXJDOĖ	ĵLQDL OLQDL													
	6RMRV													

O\JLQDQW P VX P āDOVāLĖO

(NRORJLāNĖ VĪNOĖ SDVLĪOD /LHWXYRV U\Q\NDV VHĪRQDLĖ SVYD



āDOVāLĖQ L9& āĒ035,6



.LDXOLHQRV MDXWLHQRV LU DYLVHQRV

P VDXVLR PjQ SDO\JLQW£ VVNJ ±P SURF WUHþLRV
VDXVLR PjQ /LHWXYRMH YLGXWLQLÄNDL VXSRUj DYLV (85 NJ
NDLQD GLGjMR R VNHUGLPR DS\JLVXSLUNLPRR R SDUäDYHGåLÐ ±
P VDXVLR PjQ äDOLHV VNHUGLPRVH VDYDLR ENLQÄÐ9&
SDVNHUVWD WjNVW NLDXOLÐ UHJLVWUXRWD 3UHJLVWUXRWD R
QHL P VDXVLR PjQ .LDXOLÐ VXSUNLPRR (85 NJ
VNHUGHQÐ NODVL;NDYLPR VNDLQD VXSUNLPRR VDYDLR S
SURF PDåLDX QHL P VDXVLR PjQ VXSUNLPRR QDOLJXRMDPX
ULQNRMH Y\UDYR DXNåpLDXVLRYJLVWUXRWD VXSUNLPRR WjNVW DYLD
UDXPHQLQJXPR NODVLÐ NLDXOLÐ VNHUGLPRVH VDYDLR VXSUNLPRR
UDXPHQLQJXPR NODVLÐ NLDXOLÐ VNHUGLPRVH VDYDLR G
VDXVLR PjQ VVGDUj SURF MDXWLHQRV EXYR 3UHJLVWUXRWD
VXNODVL;NXRWÐ NLDXOLÐ VNDLQD VXSUNLPRR VDYDLR QNDPDL
PjQ ± SURF \$QDOLJXRMDPX VXSUNLPRR VDYDLR QNDPDL
SDJDPLQWD WjNVW W NLDXOLÐ VXSUNLPRR VDYDLR QNDPDL
SURF PDåLDX VXSUNLPRR VDYDLR QNDPDL
P VDXVLR PjQ NLDXOLÐ VXSUNLPRR VDYDLR QNDPDL
/LHWXYRMH YLGXWLQLÄNDL VXSRUj DYLV (85 NJ
VNHUGHQÐ LU EXYR SURF GLGHVQj QHVDULR P G /LHWX
VDXVLR PjQ 9LGXWLQj NLDXOLÐ VXSUNLPRR VDYDLR QNDPDL
VYRULR NDLQD DQDOLJXRMDPX VXSUNLPRR VDYDLR QNDPDL
(85 NJ ± EXYR SURF DXNåpLDXVLRYJLVWUXRWD 3UHJLVWUXRWD R
QHL P VDXVLR PjQ (85 SURF NJ LjNVW 'DXJLDXV
3LUPRV ± NJ NDWHJRULMRV VXSUNLPRR VDYDLR QNDPDL
VYRULR NDLQD SHU PHWXV SDGLGjMR SURF DQWURV

.LDXOLÐ VXSUNLPRR NDLQRV /LHWXYRV 3PRQjVH (85 NJ V

Table with 7 columns: 5DXPHQLQJXPR NODVj, VDY ±, VDY ±, VDY ±, VDY ±, VDY ±, 3RN\WLV VDYDLWjPHWÐ. Includes rows for S, E, U, R, O, P, S-P and a summary row with O\JLQDQW P VDYDLW VX P VDYDLWH äDOWLQLV äÉ,.9& /äÉ035, ± NRQ;GHQFLDOI V GXRPHQ\V

äDOXWLQLÐ J\YiQLQLÐ SURGXNWÐ NLHNLDL JDXWL /LHWX

Table with 2 columns: VDXVLVODSNULWUXRGLVVDXVLV PjQHVL R PHWÐ, 3RN\WLV. Includes rows for ,ä YLVR, Lå WR VNDLpLDXV, JDOYLMÐ, NLDXOLÐ, DYLD LU RåNÐ, SDXNåpLÐ, NLWÐ J\YiQÐ, DWYHMDL NDL QHQXURGRPÐ J\YiQR UiåLV and a summary row with O\JLQDQW P VDXVLR PjQ VX P JUXRGåLR PjQ äDOWLQLV äÉ035,6



.LDXOLÐ (NODV;V VXSLUNLPR NDLQRV (XURSRV 6 MXQJRV YDOVV

9DOVW\E;	DWD					3RN\WLV	
	VDY ±	VDY ±	VDY ±	VDY ±	VDY ±	VDYDLW;PHWÐ	
/LHWXYD							
/HQNLMD							
/DWYLMD							
(VWLMD							
6ORYDNLMD							
6ORY;QLMD							
ýHNLMD							
9HQJULMD							
0DOWD							
.LSUDV							
%HOJLMD							
'DQLMD							
9RNLHWLMD							
*UDLNLMD							
,VSDQLMD							
3UDQF;LMD							
\$LULMD							
,WDOLMD							
/LXNVHPEXUJDV "		"	"	"	"		
1\GHUODQGDL							
\$XVWULMD							
3RUWXJDOLMD							
6XRPLMD							
âYHGLMD							
%XOJDULMD							
5XPXQLMD							
.URDWLMD							
(6 YLGXWLQ;							

O\JLQDQW P VDYDLW VX P VDYDLWH âDOWLQLV (.
 O\JLQDQW P VDYDLW VX P VDYDLWH
 " ± NRQ;GHQFLDO;V GXRPHQÐ
 3DVWDED 1XR P (6 YLGXWLQ;V NDLQRV SDWHLNLDPRV EH -XQJWLQ;V .DUDO\VV;V GX

\$YLÐ VXSLUNLPR NDLQRV /LHWXYRV ³PRQ;VH (85 NJ E

.DWHJRULMD	*\YRMR VYRULR				6NHUGHQÐ VYRULR			
	SRN\WLV				SRN\WLV			
	VDXVLR P;Q	VX	P	JUXRGáLR P;Q	VDXVLR P;Q	VX	P	JUXRGáLR P;Q
ULXNDL QH Y\UHVQL NDLS P;Q								
.LWRV DY\V Y\UHVQ;V NDLS " P;Q					"	"	"	
9LGXWLQ; NDLQD								

O\JLQDQW P VDXVLR P;Q VX P JUXRGáLR P;Q âDOWáEQ;LQ& /ãË035,6
 O\JLQDQW P VDXVLR P;Q VX P VDXVLR P;Q
 " ± NRQ;GHQFLDO;V GXRPHQ\Q
 3DVWDED 9LGXWLQ;V NDLQRV VNDL;LXRMDPRV VYHUWLQLX E;GX

\$YLÐ LU RâND VNHUGLPDL /LHWXYRV ³PRQ;VH YQW

.DWHJRULMD	3RN\WLV			
	VDXVLR ODSNULW;LXRGLVVDXVLR P;QHVLR PHWÐ			
ULXNDL QH Y\UHVQL NDLS P;Q				
.LWRV DY\V Y\UHVQ;V NDLS P;Q				
,ã YLVR				
2ãNRV				

* O\JLQDQW P VDXVLR P;Q VX P JUXRGáLR P;Q âDOWáEQ;LQ& /ãË035,6
 O\JLQDQW P VDXVLR P;Q VX P VDXVLR P;Q



*DOYLMØ VXSLUNLPR NDLQRV (XURSRV 6 MXQJRV YDOVW\E;VH (8

9DOVW\E;VH	VDY ±	VDY ±	VDY ±	VDY ±	VDY ±	3RN\WLV VDYDLW;V
/DWYLMD						
5XPXQLMD						
'DQLMD						
9RNLHWLMD						
,WDOLMD						
0DOWD						
3RUWXJDOLMD						
6ORY;QLMD						
âYHGLMD						
/HQNLMD						
\$XVWULMD						
%XOJDULMD						
,VSDQLMD						
\$LULMD						
1\GHUODQGDL						
(6 YLGXWLQ; NDLQD						

-DXQL EXOLDL \$

/LHWXYD						
/HQNLMD						
/DWYLMD						
6ORYDNLMD						
6ORY;QLMD						
ýHNLMD						
9HQJULMD						
0DOWD						
.LSUDV						
%HOJLMD						
%XOJDULMD						
5XPXQLMD						
'DQLMD						
9RNLHWLMD						
*UDLNLMD						
,VSDQLMD						
3UDQF;LMD						
\$LULMD						
,WDOLMD						
/LXNVHPEXUJDV						
1\GHUODQGDL						
\$XVWULMD						
3RUWXJDOLMD						
6XRPLMD						
âYHGLMD						
.URDWLMD						
(6 YLGXWLQ; NDLQD						

Q G

%XOLDL %

/LHWXYD						
/DWYLMD						
/HQNLMD						
6ORYDNLMD						
6ORY;QLMD						
ýHNLMD						
5XPXQLMD						
'DQLMD						
9RNLHWLMD						
3UDQF;LMD						
\$LULMD						
\$XVWULMD						
3RUWXJDOLMD						
âYHGLMD						
/LXNVHPEXUJDV						
,WDOLMD						
6XRPLMD						
(6 YLGXWLQ; NDLQD						

lentelės tęsinys 13 psl.



*DOYLMØ VXSLUNLPR NDLQRV /LHWXYRV ³PRQjVH (85

NJ VN

.DWHJRULMD SDJDO				3RN\WLV			
UDXPHQLQJXP	VDY ±	VDY ±	VDY ±	VDY ±	VDY ±	VDYDLWj	PHWØ

-DXQL EXOLDL \$

8		"					
8		"			"		
U		"					
5							
5							
R							
2		"					
2							
2	"	"	"	"	"		
O							
3							
3	"						
P							
U-P							

%XOLDL %

8	"	"	"	"	"		
U	"	"	"	"	"		-
5	"	"	"	"	"		
5	"	"	"	"	"		
R		"	"	"	"		
2		"	"	"	"		
2							
2							
O							
3			"	"	"		
3	"	"	"	"	"		
P							
U-P							

.DUYjV '

5	"			"			
5							
5							
R							
2		"	"	"	"		
2							
2							
O							
3							
3							
P							
R-P							

7HO\pLRV (

5	"	"	"	"	"		
5		"	"	"	"		
5	"	"	"	"	"		
R							
2							
2							
2							
O							
3							
3							
P			"				
U-P							

9LGXWLQj \$ (

O\JLQDQW P VDYDLW VX P VDYDLWH O\JLQDQW DOWaEQLOWDYDLOW5,6X SDWLNVOLQWL GXRPHQ\V " ± NRQ¿GHQFLDOiV GXRPHQ\V



/LHWXYRV ³PRQjVH SDJDPLQWRV PjVRV LU NDL NXULÐ PjVRV JDPLQ

*DPLQLR SDYDGLQNRMH	VJUXRGLV	VJUXRGLV	VJUXRGLV	PjQHV	PHWÐ	VJUXRGLV	VJUXRGLV	VJUXRGLV	PjQHV	PHWÐ

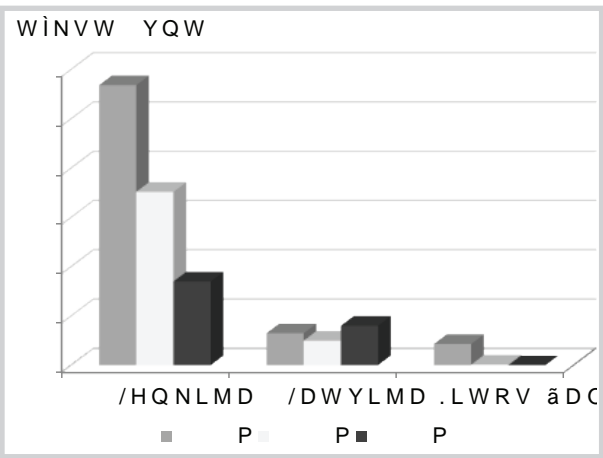
åYLHåLRV DUED DWãDOG\WRV
 MDXWLHQRV LU YHUãLHQRV
 VNHUGHQRV LU VNHUGHQÐ SXVjV LU
 NHWYLUþLDL VX NDXODLV
 åYLHåL DUED DWãDOG\WL
 MDXWLHQRV LU YHUãLHQRV JDEDODL
 8åãDOG\WRV MDXWLHQRV LU
 YHUãLHQRV VNHUGHQRV VNHUGHQÐ
 SXVjV NHWYLUþLDL LU JDEDODL
 åYLHåLD DUED DWãDOG\WD
 NLDXOLHQRV VNHUGHQRV VNHUGHQÐ
 SXVjV
 åYLHåLD DUED DWãDOG\WD
 NLDXOLHQRV NXPSLDL PHQWjV LU
 MÐ GDO\V VX NDXODLV
 åYLHåLD DUED DWãDOG\WD
 NLDXOLHQRV NXPSLDL PHQWjV LU
 VNHUGHQDV LU VNHUGHQÐ SXVHV
 NXPSLXV PHQWHV LU MÐ GDOLV VX
 NDXODLV
 8åãDOG\WD NLDXOLHQRV
 NXPSLDL PHQWjV LU MÐ GDO\V VX
 NDXODLV
 8åãDOG\WD NLDXOLHQRV LãVN\UXV
 VNHUGHQDV LU VNHUGHQÐ SXVHV
 NXPSLXV PHQWHV LU MÐ GDOLV VX
 NDXODLV
 åYLHåLRV DUED DWãDOG\WRV
 jULXNÐ DUED DYLD VNHUGHQRV
 VNHUGHQÐ SXVjV LU JDEDODL
 åYLHåL DUED DWãDOG\WL JDOYLMHL
 QRV NLDXOLHQRV DYLDHQRV
 RãNLHQRV DUNOLHQRV LU NLWÐ
 DUNOLQLÐ åHLPRV DWVWRYÐ
 YDOJRPLHML PjVRV VXESURGXNWDL
 .LDXOLHQRV NXPSLDL PHQWjV
 LU MÐ GDO\V VX NDXODLV VjG\WL
 XåSLOWL VjU\PX GåLRYLQWL DUED
 UjN\WL
 6jG\WD XåSLOWL VjU\PX
 GåLRYLQWL DUED UjN\WD
 NLDXOLHQRV
 6jG\WD XåSLOWL VjU\PX
 GåLRYLQWL DUED UjN\WD
 JDOYLMHLQD
 'HåURV LU SDQDãjV SURGXNWDL
 Lã NHSHQÐ LU GDXJLDXVLD Lã
 NHSHQÐ SDJDPLQWL PDLVWR
 SURGXNWDL
 'HåURV LU SDQDãjV SURGXNWDL
 Lã PjVRV PjVRV VXESURGXNWDL
 DUED NUDXMR LU GDXJLDXVLD Lã
 åLD SURGXNWDL SDJDPLQWL PDLVWR
 SURGXNWDL
 .LWD SDUXRãWD DUED
 NRQVHUYXRWD NLDXOLHQRV MRV
 VXESURGXNWDL LU PLãLQLDL
 ³VNDLWDQW PLãLQLXV
 3DUXRãWD DUED NRQVHUYXRWD
 JDOYLMHLQD DUED MRV
 VXESURGXNWDL

* JDPLQWRMÐ NDLQRV DSVNDLþLXRWRV VYHUWLQLX EìGX EH 390 OjJLQDQW P VDXV
 VX P VDXVLR PjQ
 ³VNDLWDQW åYLHåL PjV XåSLOW GUXVNDLWDQW ÐBNRQÐX BRQLQRQW HUMBÐQNHWYLUþLDL
 QXRNDUVDV QXJDULQHV LU MÐ GDOLV LãVN\UXV NXPSLXLãV RHLQWHSDIUXRMBV XDVQDVOJLVX
 LãVN\UXV Lã NHSHQÐ SDJDPLQWDV GHãLDM\SDU BRãWÐV YDGSJLDãLX SVRBSNDXW KR
 SDJDPLQWXV PDLVWR SURGXNWXV SDUXRãWXV YDOJLXV LU SDWLHNDQXV
 åDOVãEQ19& /ãE035,6

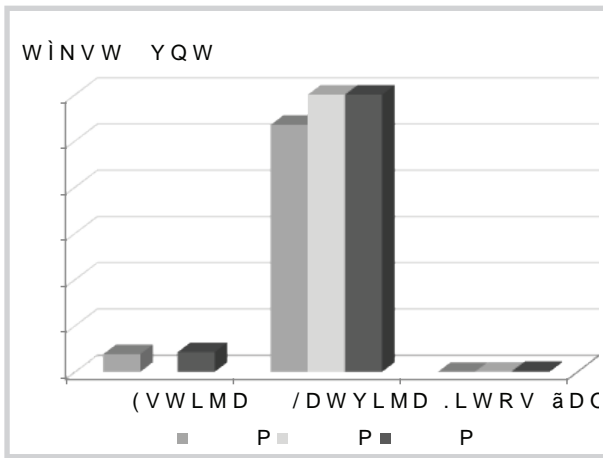


âLUYLQWÐ YQW LU \$O\WÐXPHVQ;YQHW /LHWMYQRMH 9RNLH
VDYLYDOG\E;VH NXULRV \UD GLGâLDXVLRV NLDXOL
P VDXVLR P;Q NLDXOLD VXSUNLPR VDLQ;V P VDXVL
(NODV;V YLGXWLQ; VNHUGHQÐ VXSLUNLPR VDLQ;V P Q DWLWLQ
/LHWXYRMH EXYR SURF DXNâWHVQ; XLN YLGXWLQ; (85 NJ VNHUG
(6 NDLQ .LDXOLD UHSUHJHQWDFLQ; SURF (NODV;V YLGXWLQ; (85 NJ VNHUG
VXSLUNLPR VNHUGHQÐ NDLQD /LHWXYRMH RMRMHU GLG;MR RMRMHU Q;Ð
âDO\;VH P VDXVLR P;Q SDGLMR /LHWXYRMH VYRULV DSLH N
VDXVLR P;Q GLG;MR /LHWXYRMH VDXVLR P;Q DXNâWHVQ; (85 YQW L
NLDXOLD (NODV;V VXSUNLPR VDLQ;V VVQ; QHL P VDXVLR P
(85 NJ VNHUGHQÐ SURF DXNâWHVQ; EUDQJLDXVLDL SDU
DXNâWHVQ; QHL P VDXVLR VYRULV DXNâWHVQ; YQW ,WDOLMF
YLGXWLQ; (NODV;V VXSLUNLPR RMRMHU (6 DQDQNRMRMHU 9RNLHW
WXR SDPLX ODLNRWDUSLX N;X SDU;DXVLDL (85 6XRPLMRMH (85 Y
VNHUGHQÐ LU EXYR SURF DXNâWHVQ; QHLHQNLMRMH DQDO
DWLWLQNDPX ODLNRWDUSLX WDLNLSLX YLGXWLQ; âDO\;VH Q;Ð DS
QHL /LHWXYRMH /DELDXVLDL DQDQNRMRMH DXNâWHVQ; SDU;XHOL
NLDXOLD NDLQD SDGLMR /LHWXYRMH RMRMH 1\GHUODQGD .DUDO\;V
(85 NJ VNHUGHQÐ SURF DXNâWHVQ; SURF
GLGHVQ; QHL /LHWXYRMH /LHWXYRMH YNGXWLQ; SDU;XHOL N
NODV;V VXSLUNLPR NDLQD SDGLMR RMRMH SURF RMRMHU LHLN; ±
(85 NJ VNHUGHQÐ LU EXYR SDPLX ODLNRWDUSLX SDU;XHOL
âHPHVQ; QHL /LHWXYRMH (VWLMRMRMH Q;Ð LNDLSLX (85 YQW
(85 NJ VNHUGHQÐ LU EXYR SURF
(85 NJ VNHUGHQÐ LU EXYR SURF

*\YÐ NLDXOLD .1 NRGDV HNVSRUWÐWNLÐXDLVXYRMRGDV LPSRUW

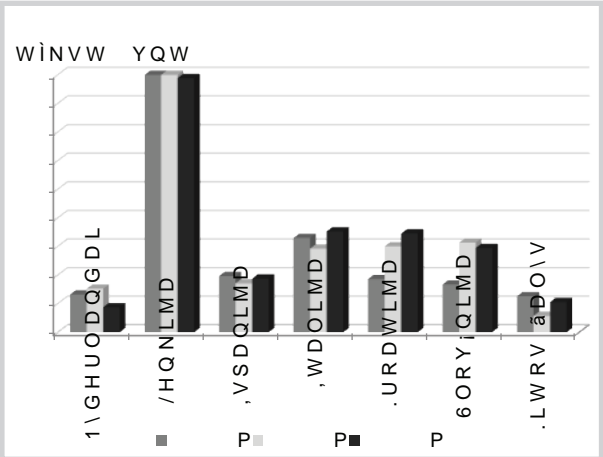


Šaltinis: 67'

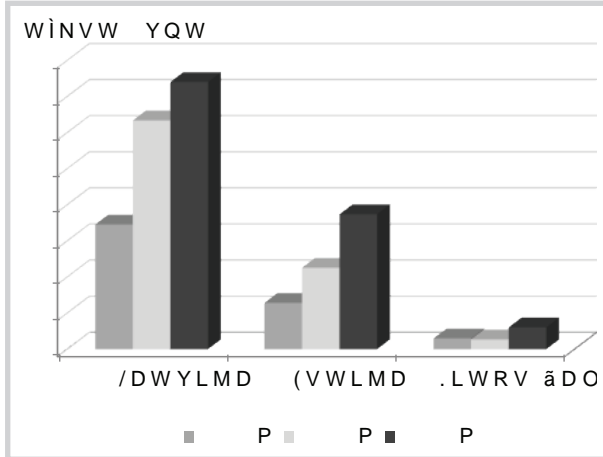


Šaltinis: 67'

*\YÐ JDOYLMÐ .1 NRGDV HNVSRUWÐWNLÐXDLVXYRMRGDV LPSRUW



Šaltinis: 67'



Šaltinis: 67'



3DXNãWLHQRV LU NLDXãLQLÐ ULQND

P VDXVLR P;Q /LHWXYRV P;Q PH VDXVLR P;Q SDOJ
 SDGLG;MR EURLOHULÐ ĘP;V JUXRGãLR P;Q SDGLG;MR SURF
 /ãĚ035,6 GXRPHQLPLV P R VDXVLR P;Q VX P VDXVLX ±
 /LHWXYRV ³PRQ;VH EXYR SDVNHUVWD P P;Q SDXNãP;Q SDGLG;MR
 LU SDJDPLQWD W SDXNãWLHQRV SDXNãP;Q SDGLG;MR
 3DXNãP;Q VNHUGLPLÐ VNDLPLXV 3DXNãWLHQRV ³SDGLG;MR /HQNL
 VX P JUXRGãLR SDGLG;MR ODLR P;Q SDGLG;MR WĪV WĪV WĪV
 SURF PDãHVQLV QHL SULHã PHWXYR ã WR VNDLPLXV SURF
 EURLOHULÐ VNHUGLPLÐ DQDOL;V SDGLG;MR SDGLG;MR SDGLG;MR
 POQ YQW ± SURF GDXJLDX QHL WĪV WĪV WĪV
 JUXRG³ WDLX SURF PDãHVQLV LMD P VDXVLR P;Q SDGLG;MR
 3DXNãWLHQRV JDPĪED YHUWĪV SDGLG;MR SDGLG;MR SDGLG;MR
 VYRU³ P VDXV³ VXGDU; 3DXNãWLHQRV P;Q SDGLG;MR SDGLG;MR
 GDXJLDX QHL P VDXV³ WDLX SURF PDãHVQLV POQ
 QHL SULHã PHWXYR ,ã WR VNDLPLXV SURF PDãHVQLV SDGLG;MR

/LHWXYRV ³PRQ;VH SDJDPLQWÐ NLDXãLQLÐ SDUGDYLPDV YLG

.RNĪE;V NODV;V	SDJDPLQWD VYRU³	3RN\WLW
9LãWÐ NLDXãLQLDL VX OXNãWDLV		
,ã MÐ VXUĪãLXRWD		
\$ NODV;	/	
	/	
	0	
	6	
% NODV;		

O\JLQDQW P VDXVLR P;Q VX P JUXRGãLR P;Q ãDOWĪEQ;Lã /ãĚ035,6
 O\JLQDQW P VDXVLR P;Q VX P VDXVLR P;Q

/LHWXYRV ³PRQ;VH SDJDPLQWÐ NLDXãLQLÐ HNVSRUWDV

.RNĪE;V NODV;V	SDJDPLQWD VYRU³	3RN\WLW
9LãWÐ NLDXãLQLDL VX OXNãWDLV		
\$ NODV;	/	
	/	
	0	
	6	
% NODV;		

O\JLQDQW P VDXVLR P;Q VX P JUXRGãLR P;Q ãDOWĪEQ;Lã /ãĚ035,6
 O\JLQDQW P VDXVLR P;Q VX P VDXVLR P;Q

9LãP;LXNÐ EURLOHULÐ VNHUGHQÐ SDUGDYLP;V YLGXWLQ;V GLGPHQLQ;V

3DYDGLQLPDV	VDY ±	VDY ±	VDY ±	VDY ±	VDY ±	3RN\WLW
,ãGDULQ;WD VNHUGHQ;O; \$ NODV;						VDYDLW;WÐ

O\JLQDQW P VDYDLW VX VDYDLWH ãDOWĪEQ;Lã /ãĚ035,6
 O\JLQDQW P VDYDLW VX P VDYDLWH
 3DVWDED 9LGXWLQ;V NDLQRV VNDLPLXRMDPRV VYHUWLQLX EĪGX

9LãP;LXNÐ EURLOHULÐ VNHUGHQÐ SDUGDYLP;V YLGXWLQ;V GLGPHQLQ;V

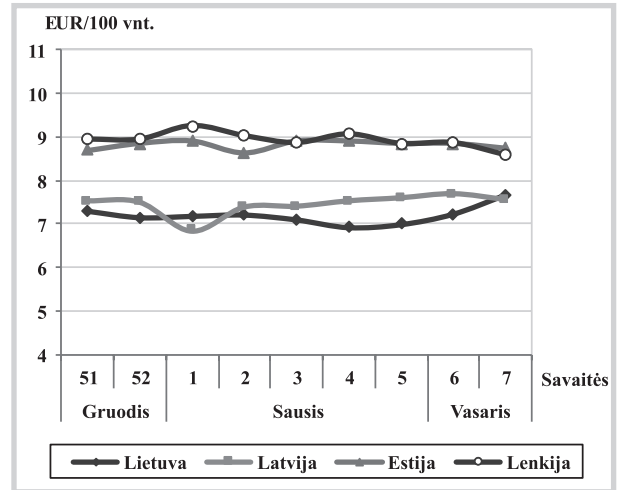
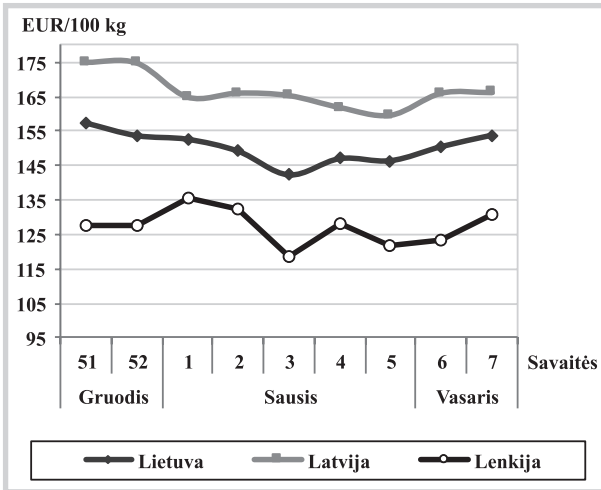
3DYDGLQLPDV	VDY ±	VDY ±	VDY ±	VDY ±	VDY ±	3RN\WLW
,ãGDULQ;WD VNHUGHQ;O; \$ NODV;						VDYDLW;WÐ

O\JLQDQW P VDYDLW VX VDYDLWH ãDOWLQLV (.
 O\JLQDQW P VDYDLW VX P VDYDLWH



SDXNāWLHQRV HNVSURUWR SDUWQDU;V SURF PPDAĀDĀR *ĻYÐ SDX
 9RNLHWLMD WĪNVW W DULĀDX YRSURĀGĀDĀ;JLDXW ± S
 -XQJWLQ; .DUDO\VW; SURFĪNVWP W DUED
 GDXJLDX 1\GHUODQGDĀ DUED *WĪNVW SDXNāpLĀ HNVSURUWDV /H
 SURF GDXJLDX LU 3UDQFĪMLDĀ ODLNRWĪDUVSLXVXGDU;
 DUED SURF GDXJLDX VX P SDGLG;MR SURF 'DX
 3DXNāWLHQRV HNVSURUWDV 3E\XRV XHNVSURUWXRWDU;WĪNVW HL
 WĪNVW W ± SURF GDXJLDX QHSURF PPDAĀLDX 1\GHU
 /HQNLāNRV SDXNāWLHQRV SDNODĀD SOFF; VGDĀĀ;DX VLĀW8DUEDĀ Q
 GLGPHQLQ;V NDLQRV SURF PDĀLDX *ĻYÐ SDXNāpL
 *ĻYÐ SDXNāpLĀ LPSRUWDV //HĀNĀWRMH P SDO\JLQWL VX
 VXGDU; WĪNVW W LU SDO\JLQWL VLXNL W
 SDGLG;MR SURF 'DXJLDXVLD SDXNāpLĀRĀĀR PĪQ SDGL
 LPSRUWXRWD Lā 9HQJULMRV YLGXWLQ;V GLGPHQLQ;V DYĀpLXND
 SURF GDXJLDX 1\GHUODQGDĀ P JUXRGĀLR PĪQ (6 YLGXWL
 DUED SURF PDĀLDX WĪNVWRYĀPLĀNRĀ EURLOHULĀ VNHUGHQĀ

9LāpLXND EURLOHULĀ VNHUGHQĀ YLGXWLQ;V SDXNāpLĀNDXĀLQLĀ YLG
 SDUGDYLP R NDLQRV EH 390 /LHSDXJGDMĀP RDNDĀLĀRRMHEĪHU390 /LHWXYR
 /HQNLMRMH P JUXRGĀLR± LPU MĀQNDĀLĀRRMĪQ P JUXRGĀLR±



âDOWĀĒLDĀ /ăĒ035/0\$, LU (.

YLGXWLQ;V / LU 0 NDWHJRULMĀ VYHUWLQ;V N
NDLQRV (85 SDWHLNWRV(\$2JDDODWVWVĀQNDĀ

âDOWĀĒLDĀ /ăĒ035,(6, /9\$ (, LU =65,5

âYLHĀLĀ VXSDNXRWĀ NLDXĀLQLĀ SDUGDYLP R YLGXWLQ;V GLGPHQLQ;V

.RN\ĒiV NODViV	SDJDĀYRUVDY ±	VDY ±	VDY ±	VDY ±	3RN\WLV VDYDLWĀWĀ
\$ NODVi					
/ QXR J LNL J					
0 QXR J LNL J					
9LGXWLQ; /±0					

O\JLQDQW P VDYDLW VX VDYDLWH O\JLQDQW PâDOWĀĒLDĀ /ăĒ035,0 V
 3DVWDED 9LGXWLQ;V NDLQRV VNDLpLXRMDPRV VYHUWLQLX EĪGX

âYLHĀLĀ VXSDNXRWĀ NLDXĀLQLĀ SDUGDYLP R YLGXWLQ;V GLGPHQLQ;V

.RN\ĒiV NODViV	SDJDĀYRUVDY ±	VDY ±	VDY ±	VDY ±	3RN\WLV VDYDLWĀWĀ
\$ NODVi					
/ QXR J LNL J					
0 QXR J LNL J					
9LGXWLQ; /±0					

NDLQRV (85 SDWHLNWRV SDJDO DWLWLQNDPRV GDWRV (&% YDOLXWRĀDĀXLV =65,5
 O\JLQDQW P VDYDLW VX VDYDLWH O\JLQDQW P VDYDLW VX P V
 SDWLNVLQWL GXRPHQ\V



9LGXWLQ;V GLGPHQLQ;V YLăbLXNĐ EURLOHULĐ VNHUGHQĐ \$ NODV;V
(85 NJ EH 390

9DOVW\E; /LHWXYD /DWYLMD %HOJLMD %XOJDULMD ýHNLMD 'DQLMD 9RNLHWLMD *UDLNLMD ,VSDQLMD 3UDQFĭjLMD .URDWLMD \$LULMD ,WDOLMD .LSUDV 9HQJULMD 0DOWD 2ODQGLMD \$XVWULMD /HQNLMD 3RUWXJDOLMD 5XPXQLMD 6ORY;QLMD 6ORYDNLMD 6XRPLMD âYHGLMD	'DWD					3RN\WLV	
	VDY ±	VDY ±	VDY ±	VDY ±	VDY ±	VDYDLW;PHWĐ	
(6 YLGXWLQ; NDLQD							

9LGXWLQ;V GLGPHQLQ;V äYLHåLĐ VXSDNXRWĐ NLDXăLQLĐ /±0 NDW NDLQRV

9DOVW\E; /LHWXYD /DWYLMD (VWLMD %HOJLMD %XOJDULMD ýHNLMD 'DQLMD 9RNLHWLMD *UDLNLMD ,VSDQLMD 3UDQFĭjLMD .URDWLMD \$LULMD ,WDOLMD .LSUDV 9HQJULMD 0DOWD 2ODQGLMD \$XVWULMD /HQNLMD 3RUWXJDOLMD 5XPXQLMD 6ORY;QLMD 6ORYDNLMD 6XRPLMD âYHGLMD	'DWD					3RN\WLV	
	VDY ±	VDY ±	VDY ±	VDY ±	VDY ±	VDYDLW;PHWĐ	
(6 YLGXWLQ; NDLQD							

O\JLQDQW P VDYDLW VX VDYDLWH âDOWLQLV (.
O\JLQDQW P VDYDLW VX P VDYDLWH



SURF YLăpLXNDVµµ SDUGDUXRGâNLBLOPQVXGDGXLWQ; GLGF
 (85 NJ W \ EXYR EHYEURLOHNDLÐ \$DMWUGHQÐ NDLDQ EX
 NDLS LU ODSNULpLR PjQ Q(85 NJ OVSNDPUDpLR PjQ LU
 SURF GLGHVQ; QHL PjQ P JURRGâLR PjQ (85
 (85 NJ ODâLDXVLD YLăWUQMH LU WUHpLRMH YLH
 GLGPHQLQ; YLăpLXND EURLOHNDLÐLMDHUGHQÐ \$SDUGDUXPR LU
 NDLDQ (6 YLVXV PHWXV LăOLNR /HQ(85MRMMHJ \$QDGDGXJ DWVLC
 MDPX ODLNRWDUSLX ML VXGDUPULMD (85U 9HQJLULMD (8
 EXYR SURF GLGHVQ; QHL P (85SNULpLR PjQ
 (85 NJ *UXRGâLR PjQVDRJNDXQEDL YLăpLXNR EURLO
 SDGLG;MLPXL ³WDNRV WXU;MRPâQHQLDQDMW X6SDRCLGRMKJVL
 SDXNăWLHQRV SDNODXVD 9RNLHWLMRMH (85 NJ L
 /LHWXYRMH SDUGXRGDPPD EURLOH(85D PjMD
 JUXRGâLR PjQ EXYR âHâWRMH YLHWRMH SDJDO SLJXP
 WDUS (6 âDOLÐ (85 NJ âDOWLQLDL âĒ,.9& /âĒ035,6 =65

.DL NXULÐ SDXNăWLHQRV JDPLQLÐ JDP\ED /LHWXYRV ³PI

*DPLQLR SDYDGLQLP³V. NR	3DJDPLQWD		3RN\WLV	
	GDV	VDXVLR PjQ VX	PjQHV	LPHWÐ
âYLHâL DUED DWăDOG\WL QHVXNDSRWL YLăpLXNDL				
âYLHâL DUED DWăDOG\WL QHVXNDSRWL NDODNXWDL				
âYLHâL DUED DWăDOG\WL YLăpLXND JDEDODL				
âYLHâL DUED DWăDOG\WL NDODNXWÐ JDEDODL				
8âăDOG\WL QHVXNDSRWL YLăpLXNDL				
8âăDOG\WL YLăpLXND JDEDODL				
8âăDOG\WL NDODNXWÐ JDEDODL				
8âăDOG\WRV QDPLQLÐ SDXNăpLÐ NHHQ\V				
âYLHâL DUED DWăDOG\WL QDPLQLÐ SDXNăpLÐ YDOJRPLHML				
PjVRV VXESURGXNWDL LăVN\UXV â VÐ LU DQpLÐ				
ULHEL VLDV NHHQLV				
8âăDOG\WL QDPLQLÐ SDXNăpLÐ PjVRV VXESURGXNWDL				
LăVN\UXV NHHQLV				
.LWL JDPLQLDL DUED NRQVHUYDL Lă NDODNXWLHQRV				
.LWL JDPLQLDL DUED NRQVHUYDL Lă SDXNăWLHQRV				
O\JLQDQW P VDXVLR PjQ VX P JURRGâLR PjQ âDOWLQLDL /âĒ035,6				
O\JLQDQW P VDXVLR PjQ VX P VDXVLR PjQ				

/LHWXYRV ³PRQ;VH SDJDPLQWÐ SDXNăWLHQRV JDPLQLÐ S

*DPLQLR SDYDGLQLP³V. NR	3DUGXRWD		3RN\WLV	
	GDV	VDXVLR PjQ VX	PjQHV	LPHWÐ
âYLHâL DUED DWăDOG\WL QHVXNDSRWL YLăpLXNDL				
âYLHâL DUED DWăDOG\WL YLăpLXND JDEDODL				
âYLHâL DUED DWăDOG\WL NDODNXWÐ JDEDODL				
8âăDOG\WL QHVXNDSRWL YLăpLXNDL				
8âăDOG\WL YLăpLXND JDEDODL				
8âăDOG\WL NDODNXWÐ JDEDODL				
8âăDOG\WRV QDPLQLÐ SDXNăpLÐ NHHQ\V				
âYLHâL DUED DWăDOG\WL QDPLQLÐ SDXNăpLÐ YDOJRPLHML				
PjVRV VXESURGXNWDL LăVN\UXV â VÐ LU DQpLÐ				
ULHEL VLDV NHHQLV				
8âăDOG\WL QDPLQLÐ SDXNăpLÐ PjVRV VXESURGXNWDL				
LăVN\UXV NHHQLV				
.LWL JDPLQLDL DUED NRQVHUYDL Lă NDODNXWLHQRV				
.LWL JDPLQLDL DUED NRQVHUYDL Lă SDXNăWLHQRV				
O\JLQDQW P VDXVLR PjQ VX P JURRGâLR PjQ âDOWLQLDL /âĒ035,6				



3LHQR LU SLHQR JDPLQLÐ ULQND

P SDGLG;MR NDL NXULÐ/LSHQRJDPLQLÐ ODLNRWDUSLX H
 HNVSURUWDV Lā (6 YDOV)UPLSRVWMLHMLWRL ÐV āNDLUWR GDXJLDX QF
 .RPLVLMRV GXRPHQLPLV P OÐEÐLQXKIRMDIPKDXJRLNRWDUSLX
 VYLHVWR HNVSURUWDV Lā (6 YDOV)UPLSRVWMLHMLWRL ÐV āNDLUWR GDXJLDX QF
 QHW SURF LNL WĪNVW SWHQ'P JLDQXMODÐVYWRQW ÐX ± /30
 EXYR HNVSURUWXRWD WĪNVW Lā QYLVR P 3DJULQGLQ;V /30 LPSR
 \$LULMD LU 3UDQFĪJLMD HNVSURUWQDLYRÐ GLUG āLOÐXVDXV WYUHLWRRLPS
 NLHNLXV DWLWLQNDPDL WĪNVWĪWVWU W LUWĪNVWĪWVW W

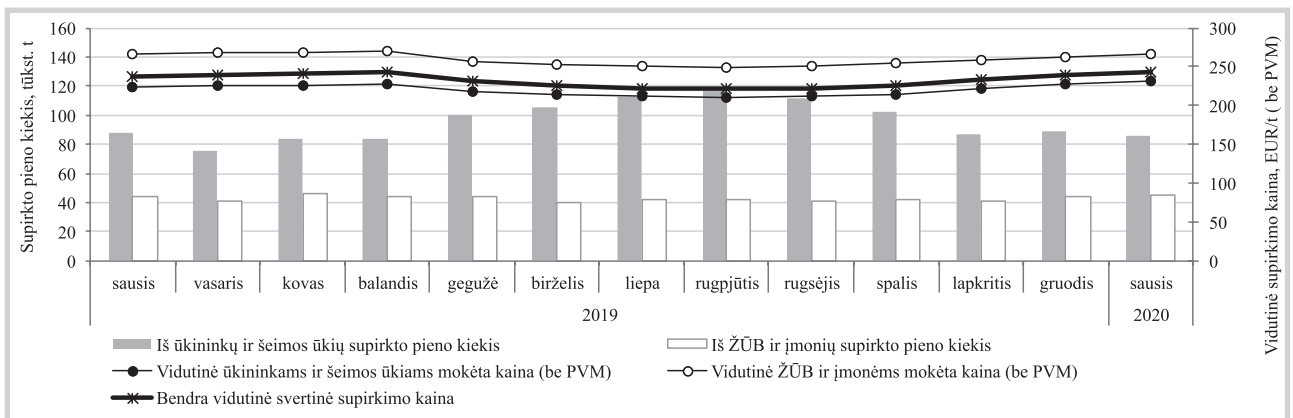
tēsinys 26 psl.

3DVDXOLQ;V SLHQR VXSLUNLPR NDLQRV EH 390 (85

3LHQLQ;V SDYDGLQÐ	QDQVĒ	JUXRGLV spalis	ODSNULMĪRGPYQHVL RPHWÐ	3RN\WL V
0LOFREHO	%HOJLMD			
0•OOHU /HSSHUVGRUBRNHLHWLMD				
'0. 'HXWVFKHV 0LOFK'P QWRLMD				
+RFKZDOG 0LOFK H* 9RNLHWLMD				
\$UOD)RRGV '.	'DQLMD			
9DOLR	6XRPLMD			
6DYHQFLD %DVVH 1RUBDQSIJHMD				
'DQRQH 3DV GH &DODBLMDQFĪJLMD				
/DFWDOLV 3DV GH OBU'RDĪJHMD				
6RGLDDO 3DV GH &DODBLMDQFĪJLMD				
6DSXWR 'DLU\ 8. 'DLU\ %UHVWQJLMD				
'DLU\JROG	\$LULMD			
*ODQELD	\$LULMD			
.HUU\ \$JULEXVLQHVV \$LULMD				
*UDQDUROR 1RUWK ,WDOLMD				
)ULHVODQG &DPSLQD 2ODQGLMD				
9LGXWLQ; NDLQD				
-\$9				
1DXMRML =HODQGLMD				

3DVWDED .DLQRV WDLNRPRV SLHQR JDPLQWRMDPV NXULÐ SLHQDV DWLWLQND VHNDQp
 EHQQUDV EDNWHULQLV XāWHUāWXPDV PDāHVQLV NDLS WĪNVW PO VRPDWLQLÐ O VW
 WRQÐ
 UHPLDQWL V)RQWHUWHPLSRWQRJāPLSVUDQDĪV P JUXRGāLR PQQLQÐ ODSNUIPLRXRO
 PĪQ VX P JUXRGāLR PĪQ
 āDOWLQNL National Milk Price Comparison at www.milkprices.nl

āDOLR SLHQR VXSLUNLPDV /LHWXYRMH Lā āDOLHV SLHQR



%DJLQLÐ URGLNOLÐ ULHXPDPV ± EDOW\PLQJXPDPV ±
 2 YLGXWLQ;V VYHUWLQ;V VXSLUNLPR NDLQRV LU EHQQUR VXSLUNLPR NLHNLR DSVNDLpLD
 VNLUWR SHUGLUEWL 3PRQLÐ YLGXMH YHUWĪ EHL NLHNLV
 āDOWLQLV āĒ,.9& /āĒ035,



3DVDXOLQ;V NDL NXULÐ SLHQR JDPLQLÐ NDLQRV (85

*DPLQLR SDYDGLQLP DV	9LGXWLQ; NDLQD
----------------------	----------------

-\$9

	VDY ±	VDY ±	VDY ±	VDY ±	VDY ±	SRN\WLV
						VDYDLWRMWD

6YLVHVW DV \$\$
 6İULV Cheddar OXLWDLV &0(
 /30 &HQWULQLV LU 5\WÐ UHJLRQDV)2%
 130 1DFLRQDOLQLV YLG)2%
 ,ãUİJÐ PLOWHOLDL &HQWULQLV UHJLRQDV)2%

9DNDUÐ (XURSRMH HNVSRUWXL)2%

	± VDY ±	± VDY ±	± VDY ±	SRN\WLV
				VDYDLWRMWD

6YLVHVW DV ULHE
 /30
 130
 /\G\W DV VYLVHVW DV
 ,ãUİJÐ PLOWHOLDL

2NHDQLMRV YDOVW\E;VH HNVSRUWXL)2%

	± VDY ±	± VDY ±	± VDY ±	SRN\WLV
				VDYDLWRMWD

6YLVHVW DV ULHE
 /30
 130
 6İULV Cheddar

/30 ± QXJULHEWR SLHQR PLOWHOLDL 130 ± QHQXJULHEWR SLHQR PLOWHOLDLQLV 86'\$
 *NDLQRV XãVLHQLR YDOVW\E;VH (85 SDWHLNWRVSDJDO DWLWLQNDPRV GDWRV (&% YDQ
 O\JLQDQW GYL SDVNXLWLQL VLDV VDYDLWHV
 O\JLQDQW P LU P DWLWLQNDPÐ ODLNRWDUSLÐ GXRPHQLV
 O\JLQDQW P ± VDYDLWHV VX ± VDYDLW;PLV

.DL NXULÐ SLHQR JDPLQLÐ NDLQRV LMRMH LU /HQNLMRMH (85 PD

9DOVW\E; JDPLQ\V	ODW	3RN\WLV
	YQWVWXVQDSNUUWRVGLVXV\;QHVRWÐ	

/DWYLM D

Tilsit ViULDL

NJ

(VWLM D

*HULDPDVLV SLHQDV ULHE LãIDVXRWDV 3 SO;YHO;V IDVXRWHV

*HULDPDVLV SLHQDV ULHE LãIDVXRWDV 3 WHWUDSDNR IDVXRWHV

6YLVHVW DV NJUÐHEWDLV NJ

6YLVHVW DV ! ULHE LãIDVXRWDVSR ± J IDVXRWHV

Edam ViULDL NJ

Gouda ViULDL NJ

9DUãN;V ViULDL ULHE NJ

/HQNLMD

6YLVHVW DV ULHE OXLWDLV NJ

6YLVHVW DV ULHE IDVXRWDV NJ

1HQXJULHEWR SLHQR PLOWHOLDL NJ

1XJULHEWR SLHQR PLOWHOLDL NJ

,ãUİJÐ PLOWHOLDL NJ

Edam ViULDL NJ

Emmentaler ViULDL NJ

Mozzarella ViULDL NJ

JDPLQWRMÐ YLGXWLQ;V VYHUWLQ;V NDLQRV EH 390 ãDOWLQLDL /9\$(, (., LU S
 O\JLQDQW P VDXVLR P;Q VÐ\JLQÐQWUXRGRRLRDXQLR P;Q VX P VDXVLR P;Q
 NDLQRV XãVLHQLR YDOVW\E;VH (85 SDWHLNWRVSDJDO DWLWLQNDPRV GDWRV (&% YDQ



äDOLR SLHQR VXSLUNLPR NDLQRV (6 YDOVW\EiVH (85

9DOVW\Ei	JUXRGLV spalis	ODSNULWLWXRGLV PiQHVL	PHW	3RN\WLV
%HOJLMD				
%XOJDULMD				
ýHNLM				
'DQLMD				
9RNLHWLMD				
(VWLMD				
\$LULMD				
*UDLNLMD				
,VSDQLMD				
3UDQFĪJLMD				
.URDWLMD				
,WDOLMD				
.LSUDV				
/DWYLMD				
/LHWXYD				
/LXNVHPEXUJDV				
9HQJULMD				
0DOWD				
1\GHUODQGDL				
\$XVWULMD				
/HQNLMD				
3RUWXJDOLMD				
5XPXQLMD				
6ORYĪQLMD				
6ORYDNLMD				
6XRPLMD				
âYHGLMD				
9LGXWLQĪ (6 EH				
-XQJWLQĪV .DUDO\VWĪV				
-XQJWLQĪ .DUDO\VWĪ				
9LGXWLQĪ (6 VX				
-XQJWLQH .DUDO\VWH				

3DVWDED 1DWĪUDODXV ULHEXPRLSHQDV VXSLUNWDV /LHWXYRMH P PiQ
 ULHEXPRL EDOW\PLQJXPR PiQ ULHEXPRL EDOW\PLQJXPR PiQ
 äDOLR SLHQR VXSLUNLPR NDLQRV VNHOELDPRLSDJDO P EDODQGâLR G (XURSRV .
 OĪJLQDQW P JUXRGâLR PiQ ODSNULWLWXRGLV PiQ VX P JUXRGâLR PiQ
 äDOWLQLDL äĒ.9& /äĒ035,6

äDOLR SLHQR HNVSURUW\LV Lâ V\HWXYRV 3 NLWDV (6 ä

äDOLR SLHQR HNVSURUW\LV Lâ V\HWXYRV 3 NLWDV (6 äDOLV YQW	V	ODSNULWLW	JUXRGLV	V	PiQHVL	PHW	3RN\WLV

1DWĪUDODXV ULHEXPRLSHQDV

9LGXWLQĪ HNVSURUW\LV Lâ V\HWXYRV 3 NLWDV (6 äDOLV							
9LGXWLQLV ULHEXPDLV							
9LGXWLQLV EDOW\PLQJXPDLV							
%HQGUDV HNVSURUWXRWDV NLHNLV 3 NLWDV (6 äDOLV							

,â WR VNDLpLDXV

NLHNLV	t						
2 /HQNLMD	YLGXWLQĪ NDLQD(85 W						
	YLGXWLQLV ULHEXPDLV						
	YLGXWLQLV EDOW\PLQJXPDLV						

%DJLQLD URGLNOLD SLHQDV

%HQGUDV HNVSURUWXRWDV NLHNLV 3 NLWDV (6 äDOLV							
9LGXWLQĪ HNVSURUW\LV Lâ V\HWXYRV 3 NLWDV (6 äDOLV							

OĪJLQDQW P VDXVLR PiQ VX P JUXRGâLR PiQ
 OĪJLQDQW P VDXVLR PiQ VX P VDXVLR PiQ
 VYHUWLQĪ EDOW\PLQJXPDLV
 EDJLQLD URGLNOLD SLHQDV ULHEXPDLV ±XRWDESDW\SHUWINDVpLLHWX
 PLâNĪ INLR PLQLVWHULMRV P YDVDULR G 3VDN\PX 1U
 3DVWDED 'XRPHQĪV SDWHLNWL UHPLDQWL 3LHQR VXSLUNLPRâDOW\PLQJXPDLV PiQ



äDOLR SLHQR VXSLUNLPDV Lã /LHWXYRV SLHQR JDPLQWRMD

äDOLR SLHQR	VXSLUNLPDV	SDJDO WLHN	MXV	ODSNUL	JUXRGV	VDXVL	PiQHVLR	PHW	VDXVL	ODSNUL	JUXRGL	VDXVL	PiQHVLR	PHW
-------------	------------	------------	-----	--------	--------	-------	---------	-----	-------	--------	--------	-------	---------	-----

1DWIUDODXV ULHEXPRLV SLHQDV

,ã ĩNLQLQNÐ LU äHLPRV
ĩNLÐ QHWDLNDQW
QXRVNDLWÐ

,ã äHPiV ĩNLR
EHQGURYLD LU ³PRQLÐ
QHWDLNDQW QXRVNDLWÐ

6XSLUNWD Lã YLVR
QHWDLNDQW QXRVNDLWÐ

6XSLUNWD Lã YLVR
WDLNDQW QXRVNDLWDV

%HQGUDV NLHNLV

9LGXWLQi NDLQD

%DJLQLÐ URGLNOLÐ SLHQDV

,ã ĩNLQLQNÐ LU äHLPRV
ĩNLÐ

,ã äHPiV ĩNLR
EHQGURYLD LU ³PRQLÐ

%HQGUDV NLHNLV

9LGXWLQi NDLQD

3DVWDED 1DWIUDODXV ULHEXPRLV SLHQDV VXSLUNWDV Lã /LHWXYRV SLHQR JDPLQWRMD
ULHEXPRLV EDOW\PLQJXPRLV PiQ ULHEXPRLV EDOW\PLQJXPRLV P PiQ
'XRPHQiV SDWHLNWL SDJDO 3LHQR VXSLUNLPR LU SDUGDYLPRLV PiQHVLR DWDVNDLW 36
9LGXWLQi VYHUWLQi /LHWXYRV SLHQR JDPLQWRMDPV PRNiWD NDLQD EH 390

O\JLQDQW P VDXVLR PiQ VO\JLQDQWXRGA PLRDPiQLR PiQ ED\JLQLÐ URGLNOLÐ SLHQDV
EDOW\PLQJXPRLV ± SHUVNDLpLXRWDV UHPLDQWLV PHWRGLND SDWYLUWLQWD /
PiQ G ³VDNiPX 1U

*2 YLGXWLQiV VYHUWLQiV VXSLUNLPR NDLQRV LU EHQGUR VXSLUNLPR NLHNLV DSVNDLpL
VNLUWR SHUGLUEWL ³PRQLÐ YLGXMH YHUWi EHL NLHNLV äDOWLQLV äE,.9& /äE035,

äDOLR SLHQR LPSRUWXRWDV ³ /LHWXYRV Lã NLWÐ (6 äDOLÐ

äDOLR SLHQR	LPSRUWXRWDV	DLNLRWÐ	(6 äDOLÐ	ODSNUL	JUXRGL	VDXVL	PiQHVLR	PHW
-------------	-------------	---------	----------	--------	--------	-------	---------	-----

1DWIUDODXV ULHEXPRLV SLHQDV

9LGXWLQi LPSRUWXRWDV DLNLRWÐ (6 äDOLÐ

9LGXWLQLV ULHEXPRLV

9LGXWLQLV EDOW\PLQJXPRLV

%HQGUDV LPSRUWXRWDV NLHNLV Lã NLWÐ (6 äDOLÐ

,ã WR VNDLpLDXV

Lã /D	NLHNLV	t	
	YLGXWLQi NDLQD85 W		
	YLGXWLQLV ULHEXPRLV		
	YLGXWLQLV EDOW\PLQJXPRLV		

Lã (V)	NLHNLV	t	
	YLGXWLQi NDLQD85 W		
	YLGXWLQLV ULHEXPRLV		
	YLGXWLQLV EDOW\PLQJXPRLV		

%DJLQLÐ URGLNOLÐ SLHQDV

%HQGUDV LPSRUWXRWDV NLHNLV Lã NLWÐ (6 äDOLÐ

9LGXWLQi LPSRUWXRWDV DLNLRWÐ (6 äDOLÐ

O\JLQDQW P VDXVLR PiQ VO\JLQDQWXRGA PLRDPiQLR PiQ VYHUWLQi VYHUWLQiV DQWYLUWLQWD
ED\JLQLÐ URGLNOLÐ SLHQDV ULHEXPRLV ±XRWDV ED\JLQLÐ URGLNOLÐ SLHQDV PHWRGLND SDWYLUWLQWD
PLãND ĩNLR PLQLVWHULMRV P YDVDULR G ³VDNiPX 1U
'XRPHQiV SDWHLNWL UHPLDQWLV 3LHQR VXSLUNLPR LU SDUGDYLPRLV PiQHVLR DWDVNDLW
äDOWLQLV äE,.9& /äE035,



.DL NXULÐ SLHQR JDPLQLÐ YLGXWLQjV VDYDLWLQjV NDLQRV

	*DPLQ\V	9DOVW\ EjVDY	VDY	VDY	VDY	VDY	VDY	3RN\WLV	
								VDYD	LPWjWÐ
	LāIDVXRWDV OXLWDLV	/LHWXYD							
	LāIDVXRWDV ³ PDáHVQHVIDVXRWHV								
	LāIDVXRWDV OXLWDLV	/DWYLMÐ							
	LāIDVXRWDV OXLWDLV	/LHWXYD							
	LāIDVXRWDV SR	(VWLMÐ							
	LāIDVXRWDV OXLWDLV	/LHWXYD							
	LāIDVXRWDV SR	9RNLHWLMÐ							
	, UĩāLV	3UDQFjJLMD							
	LāIDVXRWDV OXLWDLV	%HOJLMD							
	¿UPLQLV	,WDOLMD							
6YLHV	LāIDVXRWDV OXLWDLV	1\GHUODQGD							
SUR	LāIDVXRWDV OXLWDLV	ýHNLMD							
ULHE	LāIDVXRWDV SR	6ORYDNLMD							
	LāIDVXRWDVSR	ýHNLMD							
	LāIDVXRWDV OXLWDLV	/LHWXYD							
	LāIDVXRWDV ³ PDáHVQHVIDVXRWHV								
ES vidutinė kaina									
	LāIDVXRWDV OXLWDLV	NLOPjV āDOLV							
	\$QJOLMD								
	LāIDVXRWDV ³ PDáHVQHVIDVXRWHV								
	NLOPjV āDOLV \$QJOLMD								
	LāIDVXRWDV ³ PDáHVQHVIDVXRWHV								
	NLOPjV āDOLV \$LULMD								
	LāIDVXRWL SR	9RNLHWLMÐ							
		3UDQFjJLMD							
		%HOJLMD							
1XJULHEWR		1\GHUODQGD							
SLHQR		ýHNLMD							
PLOWHOLDL		6ORYDNLMD							
		/HQNLMD							
ES vidutinė kaina									
		-XQJWLQj							
		.DUDO\ VWj							
	LāIDVXRWL SR	9RNLHWLMÐ							
		3UDQFjJLMD							
		%HOJLMD							
1HQX		1\GHUODQGD							
JULHEWR		ýHNLMD							
SLHQR		6ORYDNLMD							
PLOWHOLDL		/HQNLMD							
ES vidutinė kaina									
	LāIDVXRWL SR	9RNLHWLMÐ							
		1\GHUODQGD							
		ýHNLMD							
		/HQNLMD							
ES vidutinė kaina									
		-XQJWLQj							
		.DUDO\ VWj							
	Gouda								
	Tilsit	/LHWXYD							
	.LHWLHML LOJDL	EUDQGLQWL							
	Edam	(VWLMÐ							
	Edam	/DWYLMÐ							
	Cheddar								
	Emmental, SURF V	9RNLHWLMÐ							
6iULD	Parmigiano								
	Grana Padano								
	Provolone								
	Provolone Cremona	,WDOLMD							
	Gorgonzola								
	Italico								
	Taleggio								
	Cheddar	%HOJLMD							
	Edam	6ORYDNLMD							



*DPLQ\V	9DOVW\E\NDY	VDY ±	VDY ±	VDY ±	VDY ±	VDY ±	3RN\WLV	
							VDYD	PH\WÐ
Edam, SURF V P	ýHNLMD							
Edam, SURF V P								
Edam								
Gouda								
Cheddar								
Emmental		/HQNLMD						
Mozzarella								
Eeta								
3HO;VLQLDL								
Cheddar								
Edam		ES vidutinė kaina						
Gouda								
Emmental								
Cheddar NLOP;V āDOLV \$QDQMD								
Cheddar NLOP;V āDOLV \$QDQMD								

*NDLQRV XāVLHQLR YDOVW\E;VH (85 SDWHLNLDPRV VSDJDO DWLWLQNDPRV GDWRV (&% YDO
 OJLQDQW P VDYDLW VX VDYDLWH
 ± QiUD GXRPHQÐ " ± NRQ;GHQFLDOiV GXRPHQIV
 3DVWDERV (6 YLGXWLQiV NDLQRV QXR P SDWHLNLDPRV EH -XQJWLQiV .DUDO\WViV C
 /LHWXYRV GXRPHQIV SDWHLNWL UHPLDQWLV 3LHQR JDPLQLÐ SDUGDYLPR VDYDLWiV DW
 āDOWLQLDL äĒ,.9& /āĒ035,6 (., \$0, /9\$(, (. 6=,) L

.DL NXULÐ /LHWXYRV ³PRQiVH SDJDPLQWÐ SLHQR JDPLQLÐ (6YDNYLGXWLQ

*DPLQLR SDYDGLQ\PPD	SDJDO 7DUERV GLUHNWY	NRGDV	VDY ±	VDY ±	/LHWXYRV>ULQNRMLHWÐ (6 YDOVW\ELÐ LU WUHþLÐ				WRN\WLV	
					VDYDL	PHWÐ	VDY ±	VDY ±	VDY ±	VDY ±
6YLVWDXLWSDRF										
ULHEXPRI DVXRWDV										
6iULDL										
Gouda										
Tilsit										
.LHWLHML LOJDLEUDQGLQWL										

VYHUWLQiV JDPLQWRMÐ EH 390
 OJLQDQW P VDYDLW VX VDYDLWH
 OJLQDQW P VDYDLW VX P VDYDLWH
 " ± NRQ;GHQFLDOiV GXRPHQIV

/30 ³ WUHþL VLDV āDOLV HNVSURUWDYRHOJLMDiNMLV W ViULE
 YLVR W iNVW W LU 3DOiJLQWL VX QHXJULHEXPRI SBAQR PLOWHOLE
 W iNVW /LHWXYD DQDOLJXRMDPX ODNRWDUSiNXSRUWDV SDG
 HNVSURUWViNVW W /30 GDXJLDXVIDUJLQSDQX ODLNRWDÐSLX SD
 W iNVW W 3DOiJLQWL VX QHXJULHEXPRI SBAQR PLOWHOLE
 HNVSURUWDV SDGLGiMR SURFHNSRUWDV Lā (6 YDOVW\ELÐ ³ W
 P ViULE HNVSURUWDV Lā (6 YDOVW\ELÐ W iNVW W
 ³ WUHþL VLDV āDOLV VXGDUi 130 LNSURUWāDOVEXPRI 2PDQ
 SURF GLGHVQLV QHL P 'DXULRXLPSRUWDYR DWLWLQNDP
 YDOVW\E;V HNVSURUWDYR ³W-\$9 Lā W iNVW 30 W iNVW
 LU -DSRQLM Lā WLVRDXJLDXVIDUJLQSDQX ODLNRWDUSiNXSRUWDV
 WDUS (6 YDOVW\ELÐ HNVSURUWDYR W iNVW W W iNVW W
 W iNVW W LU 9RNLHWLMD Lā YLVR W iNVW W
 \$QDOLJXRMDPX ODLNRWDUSLX /LHWXYD ³ WUHþL VLDV āDOLV (. .



3LHQR VHNWRULXV NXULV RVXGDNBUDYSÐHOSHONQpLÐ ODLN\W
WDGDO³ YLVRV åHPjV ÌNLR SUNLGHXNLF\LMRFDÄ;MVRXYRMSURF ÈNLÐ
LäOLHND SULRULWHWLAËH.9â8HPGDËNLBXXãDDNYLÐ SDUGXRGDP R SI
EHQGUDGDUELDXXGDPDV VX DWVDNSURJRP ÆVQLXRV WLWXFLMIRPLW W
± äHPjV ÌNLR PLQLVWHULMD 9097 8/\$%VÄ3LVHQR P
W\ULPDL³ 9ã² .DLPR YHUVOR LU ULQWEXYSOMWURXSDJHQNWDUPV SDU
VDYLYDOG\ELÐ DGPLQLVWUDFJLMPRLQWRMÐ VNDYHQLQVQNDVPHW P
/LHWXYRMH SDJDPLQWR SLHQRSDLSVQRDLVORVQDGRMQLVYLGDXYLIPRL äN
WYDUN LU DGPLQLVWUXRMD 3NEQRLEÐSWNDLPLXW DQJRDUPDFLQ
VLVWHP 3\$,6 3\$,6 GXRPHQLPLV P VDX
äË,.9& VLHNLD NXR RSHUDWXXSÐNLLP RNOPROGLÄLDSLHQR JDPL
VXULQNWL DWDVNDLWDV Lã åDÖLQXSVLHQ;RISINUN;MjÐ EDSJLH VEX SURJ
SLHQ LU PRNDP NDLQ EHL VSVILVHGDPELQWU QXIRVNDLFLVRIPLV W
SHUGXRWL VXLQWHUHVVXRWRV LRPGLNOV VLVNDXQLDMRFXGDULXVL
3\$,6 GXRPHQLPLV P PjQHJDXVRU XRWRJX ä;V±UXJSMipLR
SLHQR VXSLUNLPR³PRQjV WRQDNXVÆQ;XISDJLQ;MEDURIGÄLNOLD NDLQ
SLHQR JDPLQWRMÐ VXSLYINGRXVQLXVRLW ÌNWRV P FQ VDMVUR;XRGåLR
SURF ULHEXPR SLHQR W PLGåLDXVLDVINSVWQR JDPLQWRMDI
YLGXWLQLR SURF UIPHEXPRD SLQHORURGLNOLD NDLQD EXYR E
WÌNVW W SURXWUQH XPR SLHQW 3\$,6 GXRPHQLPLV
P SDO\JLQWL VX P WXRQSDVXSLONLNRWPRQLÐ SLHQR JD
SLHQR VXSLUNLPDVWVWVWãPWRDNWLQ; EDJLQLÐ URGLNGLW NDLQ
SURF R VVXPDä;MR WÌNDVJLVQWUEX P JUXRGåLR Pj
SURF 3LHQR JDPLQWRMÐ P SÄHVGX;RGDQpLÐ SLHQ
VXSLUN;MDPV PNDSDVXVQVWL VX 3\$,6 GXRPHQLPLV SLHQR JDP
VXPDä;MR WÌNSURF DRESDOGXQVQWV SLHQ NLWRMH (XUR
P VXPDä;MR WÌNVW DUWROLDX SURF(6 UHJLVWUXRWLHP
3LHQR JDPLQWRMÐ VNDLpLXV P SÐUGSDYQ\JLQWLVÌNVW W SLH
VX P ODELDXVLDL VXPDä;MRP9LCSQHQRV SßWGHQRLPDLWSDGLC
LU 3DQHY;åLR DSVNULW\VH DDJEDDj;NDDSVRIULWLW JDÐWRV
GLGåLDXVLD SDJDO SLHQR JDP LQWRSMH QRI DLPDQW B MLD X-MLH QXU
JDPLQWRMÐ SDUGXRGDQpLÐ SSBQGD X\$SISUN;MLDPEW LV NHDQLXRMH
P Xå;NVXRWDV 9LOQLDXV UHJLVWUXRWLHP VÌNDVHVXEMHNWD
P VXSHUNDR SLHQR NLH\$N,16V GSRÐHQQLV SLHQR JDP
VX P PDä;MR EHYHLN YLGRIGDQSWWUSWHQH WELHWLRJLDL YD
ODELDXVLDL ± 9LOQLDXV 6XSHUMDRRWSMHQRHQRHSIDV\JLQWL V
P WXU;MR WHQGHQFLM D\$LVWRãLSDXLOGDYLPDGLG;MPD äQMRD
SURF LU 7HOãLÐ SDGLG;MR SURF DSVNULW\VH
3\$,6 LU È*5 GXRPHQLPLV P PSLBQRHLQDPRMR ODLNRWD
JDPLQWRMÐ SDUGXRGDQpLÐ SLHQDPOÐ ÆNSLHQV BSGMVLPLXRVWD
SLHQLQLÐ NDUYLÐ VNDLpLXV VLLHN\XYRV SÌNHQR 3DÐLQVQRMÐ R
VX P SLHQLQLÐ NDUYLÐG VXLJLpLXVNDLVXPDä;MRQ (85
WÌNVW NDUYLÐ DUED VXRFB LHQLQQR NDBYQWRMDPV E
VNDLpLXV PDä;MR YLVRVH DSVNULW\VH PDApDXXSODBPRXVSDLU DI
± 9LOQLDXV .DXQR LU 8WHQRWDSV;MLR\VH SURF WDpLDX
3\$,6 LU È*5 GXRPHQLPLV YSGRWLQDÄNDDODXHQDP SDUDPRV
ULHEXPR SLHQR VXSLUN;MDPVSDUDPR\$DUXGPDY; LU
GDXJLDX SLHQLQLÐ NDUYLÐ ODLNDQW\VVXVHEWRIDPLQVBDMD Xå
± NDUYLÐ ODLN\WRMDSURFNXSLHQVXGIDp;XRWD GDXJLDX NDLS V
JDPLQWRMÐ SLHQR VXSLUNLPRPL³QVRFMV SDUGBRV VXPDLVH
SURF YLVR VXSLUNWR SLHQRPOQ 6L5RF SLHQFSDO\JLQWL V
VXSLUNLPR³PRQjPV SDUGDY; SLHQD UYLDPLQWRMVRMDELXYR DSVN
NXULH VXGSURF SLHQR JDPLQWRMEX3SLHQPRV SDUDPRV JDYj
SDUGDYLPDV P SDO\JLQWL VXSVR SDpLX SURF ÌJWHO;MR
ODLNRWDUSLX ODELDXVLDL PDAJDRLVãJDM;M XN XVHLHXODRWRSDU
± LU ± NDUYLÐ 6XSLUNWR SLHQR NLHNLV Lã ÌNLÐ
ODELNDQpLÐ ± PNDVXPDä;MR SÄBFLQLV äË,.9& 3\$,6 ± 3LHQR DSVNDLWRV



P SLHQR JDPLQWRMĐ NDUYLĐ VNDLpLXV LU VXSLUNWR SLF

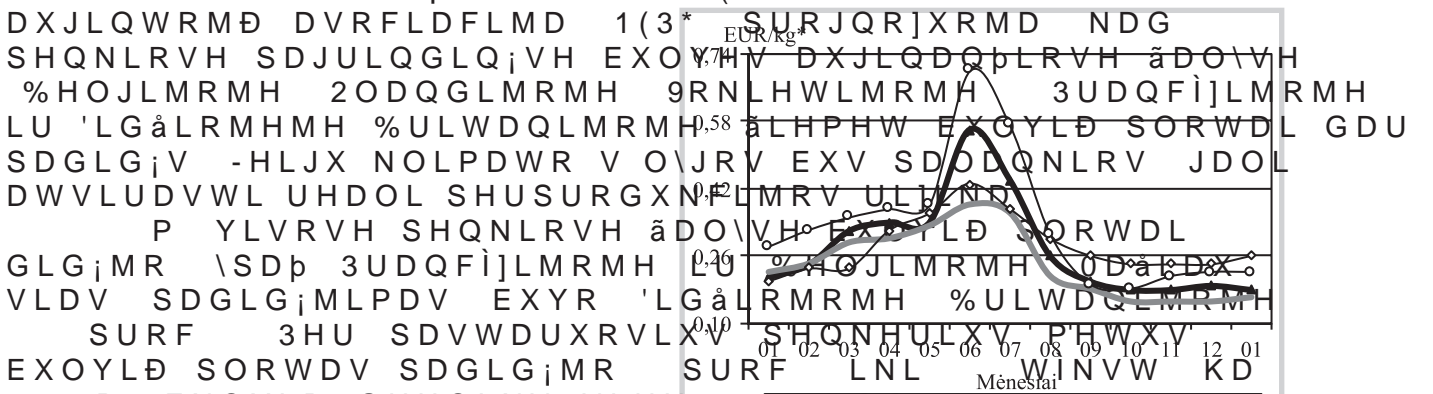
6DYLYDOG\i	*DPLQWRMĐ VXLUN;MDPV	WLNHXV6XSLHQR	MĐ VXS LUNWĐXWLQLV	NDUYLĐ YQW
\$NPHQ;V U VDY				
\$O\WDXV U VDY				
\$Q\NãpLĐ U VDY				
%LUãWRQR VDY				
%LUãĐ U VDY				
'UXVNLQLQNĐ VDY				
(OHNWU;QĐ VDY				
,JQDOLQRV U VDY				
-RQDYRV U VDY				
-RQLãNLR U VDY				
-XUEDUNR U VDY				
.DLãLDGRULĐ U VDY				
.DOYDULMRV VDY				
.DXQR P VDY				
.DXQR U VDY				
.DJQĐ 5İGRV VDY				
.HOP;V U VDY				
.ODLS;GRV U VDY				
.UHWLQJRV U VDY				
.XSLãNLR U VDY				
.;GDLQLĐ U VDY				
/DJGLMĐ U VDY				
0DULMDPSRO;V U VDY				
0DãHLNLĐ U VDY				
0RO;WĐ U VDY				
3DJ;JLĐ VDY				
3DNUXRMR U VDY				
3DQHY;ãLR U VDY				
3DVYDOLR U VDY				
3OXQJ;V U VDY				
3ULHQĐ U VDY				
5DGYLOLãNLR U VDY				
5DVHLQLĐ U VDY				
5LHWDYR VDY				
5RNLãNLR U VDY				
6NXRGR U VDY				
7DXUDJ;V U VDY				
7HOãLĐ U VDY				
7UDNĐ U VDY				
8NPHUJ;V U VDY				
8WHQRV U VDY				
9DU;QRV U VDY				
9LONDYLãNLR U VDY				
9LOQLDXV U VDY				
=DUDVĐ U VDY				
ãDNLĐ U VDY				
ãDOpLQLQNĐ U VDY				
ãLDXOLĐ U VDY				
ãLODO;V U VDY				
ãLOXW;V U VDY				
ãLUYQLQWĐ U VDY				
ãYHQpLRQLĐ U VDY				
,ã YLVR				

ãDOWLQLV äË,.9& 3\$,6 ± 3LHQR DSVNDLWRV



%XOYLD GDUåRYLD LU YDLVLD ULQN

%XOYLD DXJLQLPDV LU ODLNVPDYLVLGDXNDLQRV augintoju
EUDQJVWD åLDXU;V 9DNDUÐ (XURNLWEXDYLÐVWIE;VH ±



EXOYLD SORWDV SDGLG;MR SURF LNL WINVV KD
P EXOYLD GHUOLXV VLHN; LU HNVSURUWXL GLG;MD

EXOYLD SDNODXVD SHUGLUELPXL LU HNVSURUWXL GLG;MD
WDpLDX 1(3* HNVSURUWDL PDQR NDG åL WHQGHQFLMD \UD

ULJLNLQJD SDNODXVRV LU SDVLNORVVSXVLLHDXRVYDUDLE;VH (85 SDWHLN
ËNLQLQNDL QRUL DXJLQWL(& EXOYLDNXUMV WRNLD

DOWHUQDW\YL NXOW\UD NDLS FXNULQLDL UXQN\HOLDE MLHPV(MD
QHDWURGR SDWUDXNOL

1\GHUODQGXRVRV SDVWHELPD 1\EXOYLDGDSORW;V ÌNLR DVRF
GLG;MLPR WHQGHQFLMD VP;OJLQDQW P VDYDLW VX VDYDLWH

3UD;MXVLDLV PHWDLV G;O 3SUBVWXYJFKHPLQLV SUHSDUDV
V O\JÐ \SDp SDGLG;MR EXOYLDXBLQDPRNHQ;NMDGRV

9LHQXRVRV UHJLRQXRVRV EXOYHV UHLNMRGDXGLMDLDLVW\WL
NLWXRVRV ± EXYR SHU GDXJ GU;JPPLDYWRGLG;MDQW EXOYLD SOR

GLGHVQLÐ V QDXGÐ GåLRYLQLPXLN;WBOG;CHXRVRV NEXYR NDG S
GLGHVQL QXRVRWROLDL G;O JXPEDSåHLGLPRDLN;PRYLPDLGDV

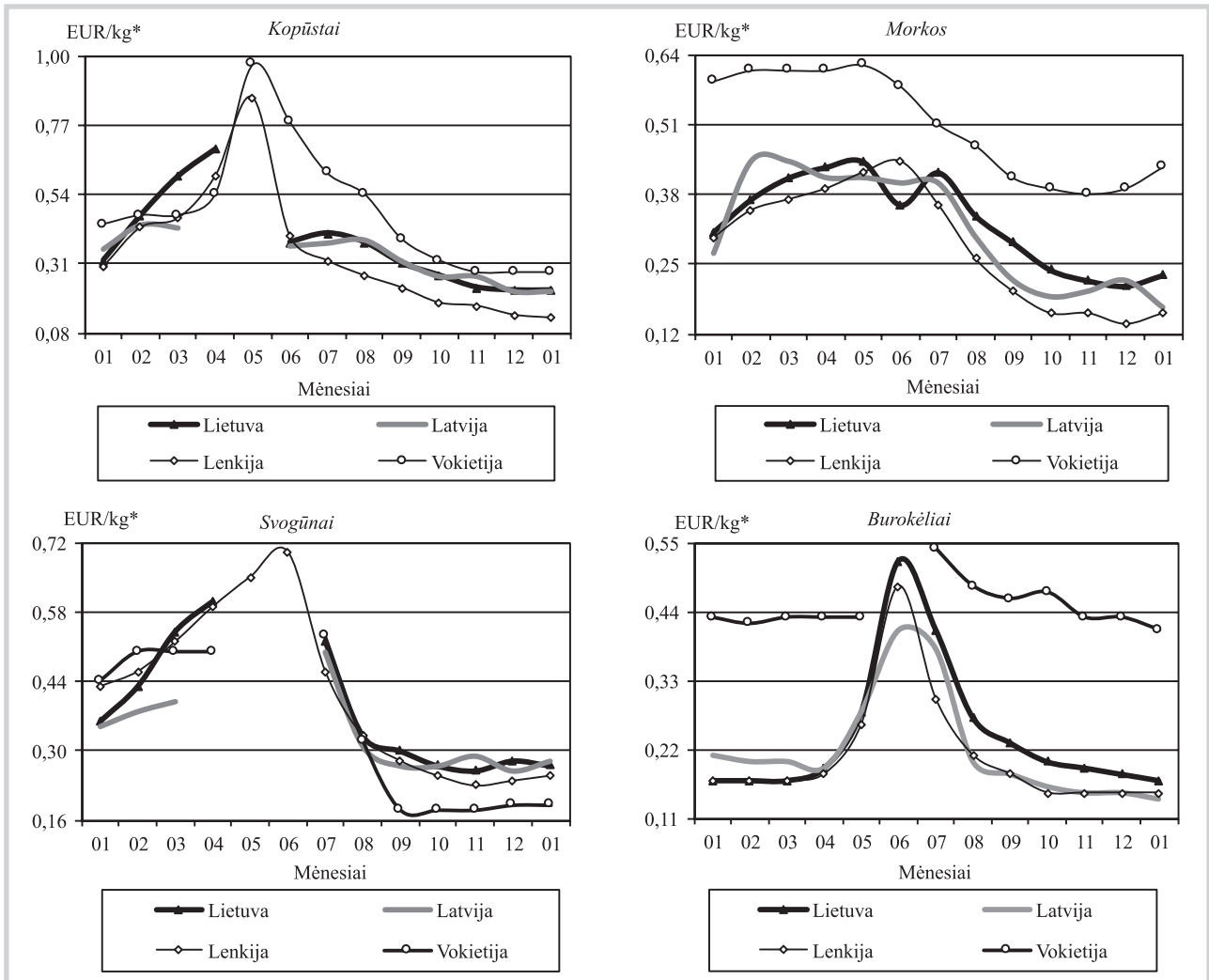
%XOYLD GDUåRYLD LU REXROLD YLGXWLQ;V SDUGDYLPR NDLQR
LU åLOWQDPLXRVRV (85 NJ EH 390

3URGXNFLMD	VDY ±				3RN\WLV			
	VDY ±	DWDY ±	VDY ±	VDY ±	VDYDLW;VPHWÐ	VDYDLW;VPHWÐ	VDYDLW;VPHWÐ	VDYDLW;VPHWÐ
%XOY;V								
0RUNRV QHSODXWRV								
0RUNRV SODXWRV								
0RUNRV VNXVWRV								
%DOWDJiåLDL NRSiVWDL								
5DXGRQJiåLDL NRSiVWDL								
.LQLQLDL NRSiVWDL								
%XURN;OLDL								
6YRJiQDL								
6YRJiQÐ ODLåNDL								
6DORWRV YQW								
3ULHVNRQLQ;V åROHO;V YQW								
,OJDYDLVLDL DJXUNDL								
5DXJLQWL NRSiVWDL								
5DXJLQWL DJXUNDL								
2EXROLDL								

EXOYLD LU GDUåRYLD NDLQÐ VNLUWXP OHPLD NRN\E; SUHNLQLV SDUXRåLPDV SDWHLN
O\JLQDQW P VDYDLW VX VDYDLWH åDOWLQLV åË,.9& /åË035,
O\JLQDQW P VDYDLW VX P VDYDLWH



'DU ÅRYLÐ YLGXWLQ;V NDLQRV *augintojũ* /LHWXYRMH LU NLWRVH



NDLQRV XÅVLHQLR YDOVW\E;VH (85 SDWHLNWRÅDSDWLDQ DLW LÅVLQNDPÅE0SDWRV9\$&.% ÅD

Ä%UH[LW³ WDL S DW WXU;V 'DU ÅRYLÐ DUWN M DVQ Ð Ð DUWRWL
 EXOYLD VH]RQXL 7DL EXV YLHODXWLÅ P XOYLSDDUJEQWYLDX
 SURGXNWD WLHNLPR JUDQGLQVXS LÅNMLD WR SUC FEXGYXDMX V
 DXJLQWRMDL MDX GDEDU WXU\$JÅWVNDNVQSDUNYPHDWLSDVWGLWIKN
 ODXNLDQpLXV DWHLQDQpLR VH]RQRWããNDLQRWÐ ± NDUWR
 P VDXVLR P;Q /LHWXYRMH EXOYLD NRSIVWÐ ± SUR
 LU GDUÅRYLÐ EXYR VXSLUNWYR JÅP LDX SURFOYLD LW VYRJIQE
 VNLUWÐ åYLHÅLDV YDUWRWL ODLÅNPH SURRV LÅRULQWÅMF
 GLGPHQLQ;V LU PDÅPHQLQ;V SÅHNERVWLU 7DWRVHID VXSLU
 ³PRQ;VHP VDXVLR P;Q SDO\JLQVLPÅ;MR P SURF LNL
 DWLWLQNDPX ODLNRWDUSLX VXSUNWÐ SURF SURF LNLGDXJLDXW
 W \ W 3HUGLUEWL VNLUWÐ EXOYLD VXSLUNWÐ P PDÅ
 SURF GDXJLDX ± W QXR VDXVURV WRG;O LU DWHLQ

%XOYLD LU GDUÅRYLÐ VXSLUNLPR Lã /LHWXYRV DXJLQWRMÐ SHUGL

3URGXNFLMD	VDXVLR ODSNULWLWXRGLV	VDXVLR P;QHVLR	PHWÐ
%XOY;V			
%DOWDJiãLDL NRSIVWDL			
ORUNRV			
%XURN;OLDL			
6YRJIQDL			
O\JLQDQW	P VDXVLR P;Q VX	P JUXRGÅLR P;Q	ãDOWLQLV äE,.9& /ãE035,
O\JLQDQW	P VDXVLR P;Q VX	P VDXVLR P;Q	



VXSLUNLPDV GDU WXU;WÐ EİWL 2E8R0E0YR G;OSIDUNWQWRMÐ SURF
 VDQG;OLXR VH HVDQpLÐ GLGHVQLÐ DWVDQJHÐ âL PÄLHGO SDYDV
 DJXUNÐ LãDXJLQDPD NXU NDV REXRQJLQDQW GPHUO ISXDG IEG;VRR ODEDL
 MÐ SORWDV WLQNDPDV DXJLQQLHWHYRÄMÐV REXRÖLÐ UHÐOLJDFL
 SDGLG;MXVLRV SDNODXVRV VDOR3VHÐ GSDUVELLÖÐ VPRLOS;VSHW \UÐ V
 GLGHVQ; 7DpLDX EXURN;OLÐ SVDXSJLQWPDV XäY LHå PÐFDVÄRYLRÐ P
 YDUWRMLPXL ODEDL VXPÐå;MRV XSHUNä³PDM]SQGLM;HM RQ;UW SURF
 VXSHUNDPL HNVSRUWXL 7DLS%SDW DNHÄlpÐ DVN XSDUMWRPDRMÐ SDG
 ³SURpLDL MLH GDXJLDX UHQNDVLS SRIFGLUIMPXU HÄVURN SORRV LN
 WRG;O QXRODW GLG;MD MÐ VXSLUNLVDVESHURQ;OEDPXL SURF
 3LHYDJU\ELÐ YDUWRPWL äYLRHåÐXV SURF LNL W
 VDXVLR P;Q SDO\JLQWL VX P DWLWLQNDPX
 ODLNRWDUSLX VXSLUNWD SURFwPÐåLDX, .9 & FreshPÐå3W6Fresh-market

%XOYLD GDUåRYLD SLHYDJU\ELÐ LU YDLVLÐ VXSLUNLPR Lã /LHWXYRV DXJ

3URGXNFLMD	0DåPHQLQ;VLGPHQLQ;V.LWRVH 9LGXWLQ;NDLQD YLVRVH ³PRQ;VH			9LGXWLQ;V NDLQRV YLVRVH ³PRQ;VH		
	SUHN\ERV	³PRQ;VH	³PRQ;VH	³PRQ;VH	³PRQ;VH	SRN\WLV
%XOY;V						
%DOWDJiãLDL NRSìVWDL						
5DXGRQJiãLDL NRSìVWDL			-	-	-	
ORUNRV						
%XURN;OLDL						
\$JXUNDL	•		•	•	-	
6YRJìQDL						
6YRJìQÐ ODLãNDL			•	•	-	
6DORWRV			•	-	-	
3LHYDJU\ELDL						
2EXROLDL						

O\JLQDQW P VDXVLR P;Q VX P JUXRGåLR P;Q äDOWLQLV äË,.9& /äË035,
 O\JLQDQW P VDXVLR P;Q VX P VDXVLR P;Q
 " ± NRQ;GHQFLDOiV GXRPHQ\V

%XOYLD GDUåRYLD LU YDLVLÐ NDLQRV /HQNLMRV GLGPHQLQ;V SUHN\

'DUåRY;V YDLVLDL	'DWD								3RN\WLV	
	PLQ	PDNV	PLQ	PDNV	PLQ	PDNV	PLQ	PDNV	PLQ	PDNV
%XOY;V										
ORUNRV										
%XURN;OLDL										
6YRJìQDL										
5DXGRQLHML VYRJìQDL										
%DOWDJiãLDL NRSìVWDL										
5DXGRQJiãLDL NRSìVWDL										
.LQLQLDL NRSìVWDL										
6DYRMRV NRSìVWDL										
6DOLHUDL										
âDNQLQ;V SHWUDåRO;V										
3RUDL										
7UXPSDYDLVLDL DJXUNDL										
	Gala (65+ mm)									
	Golden Delic. (70+ mm)									
'HVHUVW	Mura (70+ mm)									
REXROL	Lobo (70+ mm)									
	Lobo (70+ mm)									
	Šampion (70+ mm)									
.ULDXä;V	Konferencja									

± DXJLQWRMÐ SUHN\ELQLQND YLGXWLQ;NDLQD ³YDLULXR VH /HQNLMRVQ;VH
 O\JLQDQW VX
 NRQWUROLXRMDPRV DWPRVIHURV äDOG\PR NDPHURVH ODLNRPÐ GHVHUWLQLÐ REXROL



7HFKQLNRV ULQND

P VDXVLR P;QHv³ åHP;V ÌNLRVHFKQLNRV YLVL SDJDPL
³UHJLVWUXRW ÌNLRVHFKQLNRV VDYDHLJL ÌNLRVHFKQLNRV DWLWLQNDSPURF S
 ÌNLR PDãLQÐ EHL MÐ SULHNDED ÌNLRVHFKQLNRV DWLWLQNDSPURF S
 P VDXVLR P;Q åHP;V ÌNLR VXESURFVHFKQLNRV /LHWQWRM ÐUED DWLV
 Lã YLVR ³UHJLVWUDYR WUDNWRULDL SURF SUNDYR NRPEQWLXLVã NXU
 VUXWYHãLXV VDYDHLJ³ SHSVDLFLGQV SXUNã WXP LDUED DWLV
 VDYDHLJ³ VPXONLQWXY \$QDQJ SURFVHFKQLNRV DWLWLQNDSPURF S
 SURF ³UHJLVWUXRWÐ WUDNWRULDL SURFVHFKQLNRV DWLWLQNDSPURF S
 WUDNWRULDL LU SURFVHFKQLNRV YQW Lã NX
 P VDXVLR P;Q åHPGLUESDIDLFLGQV WUDYR DSURFDWUW
 SHQNLDVGHãLPW WULV ± SURFDJDPLQWXY
 WUDNWRULXV WDL VXGDUR SURFVHFKQLNRV DWLWLQNDSPURF S
 WUDNWRULÐ 'LGãLRVLRV GDOL ÌNLRVHFKQLNRV DWLWLQNDSPURF S
 UDWLQLÐ WUDNWRULÐ JDOLD EXYRDPYã HVRPENNDSKV \$ã MÐ SD
 1XR LNL \$* JDOLRV UDWLQLÐL QHEHWRQLDL WIXGDU;RÐXJXP
 SURF P VDXVLR P;QDGLGHXQMDNXLSDOLNRWDUSLX
 \$* JDOLRV WUDNWRULÐ EXYR³PHILOVEXYRVDYDN SURFVHFKQLNRV
 YLVÐ /LHWXYRV åHP;V ÌNLR V³XEMHWNWÐXRWDLVWWRWÐ SURF
 WUDNWRULÐ NRPEDLQÐ NRPSDQLMRV SURF DI
 P VDXVLR P;Q DUE+Massey Ferguson, DUE J SURF ±
 UHJLVWUXRWÐ UDWLQLÐ WUDNWRULÐÐEYR SURFVHFKQLNRV DWLWLQNDSPURF S
 ãDO\Belarus Lã MÐ SDJDPLQWL ± SURFVHFKQLNRV DWLWLQNDSPURF S
 &K7= /7= 07= LU 97=±907enlev DMWQLDDUED SURF ± Deutz
 WUDNWRULDL P VDXVLR P;Q åHP;V ÌNLRVHFKQLNRV DWLWLQNDSPURF S
³UHJLVWUDYRUDWLQLXV WUDNWRULDL EXWRPDLXQLÐ
 SDJDPLQWÐ DU P QHEXYR QHE YLVÐRLRDR;Q /LHWXYRV
 VXGDUR SURF YDSDURFHWLSDHJDVWDDYR ÌNLRVHFKQLNRV DWLWLQNDSPURF S
 DQDOLJXRMDPX ODLNRWDUSLX. ³UHJLVWUXRWXDSVWDDYR ÌNLRVHFKQLNRV
 .LWL åHP;V ÌNLR VXEMHWNWÐ ÌNLRVHFKQLNRV DWLWLQNDSPURF S
 LãVLG;VWRWDL\$QW DUEÐ DWLWLQNDSPURFVHFKQLNRV DWLWLQNDSPURF S
 SURF LU Iseki SURFVHFKQLNRV DWLWLQNDSPURF S
 SDJDPLQWÐV P DUEÐRFLWLVHFKQLNRV DWLWLQNDSPURF S
 SURF Deere YQW Lã NXULÐNDLQRPDLãMR \$% Å25/(1 /LHV
 ± P DUEÐ DWLWLQNDSPURFVHFKQLNRV DWLWLQNDSPURF S

		/LHWXYRV åHP;V ÌNLR VXEMHWNW Ð V P YDVDULR P;Q ³ UHJLVWUXRW UDWLQLÐWUDNWRULDLVWDDYR VNDLXLV SDJDDO JDPLQWRM																					
7UDNWRULDL	PDUN; <DPPDU	.XRV	.VHNL	07=)0272	,QWHUQDWRURPQ	,+&	/292/	/7=	0F&RUPLFN	6ROLV	%UDQVRQ	&DWHUSLOODKLEDX	'DYLG %URZQ97= 907=)RWRQ	+RQGD	.\PFR	3URQDU	5HQDXOW	6DWRK	6XJXH	+\$77\$7	
,ã YLVR	,ã MÐ SDJDPLQWL	± P																					
7UDNWRULDL	PDUN; .LWL	3RVD	&DQ \$0)HQGW)RUGVRQ	,QWHUQDWRURPQ	,+&	/292/	/7=	0F&RUPLFN	6ROLV	%UDQVRQ	&DWHUSLOODKLEDX	'DYLG %URZQ97= 907=)RWRQ	+RQGD	.\PFR	3URQDU	5HQDXOW	6DWRK	6XJXH		
,ã YLVR	,ã MÐ SDJDPLQWL	± P																					

ãDOWLQLV ãË,.9& /ãË035



NDLQD DQDOL]XRMDPX ODLNRWDUSLX SURF Dã; (WVLMR SNUR FDQDOL]X
 G\]HOLQR àHP;V ÌNLXL ± SURF\]HOLQR Dã; REXOR D GXMDR F /HQN
 SURF NURVQLD NXUR ± SURF DWYRMH HOLQR \$SURF EUDQJHV
 SDGLG;MR SURF P YDVDULR P;Q SDQ\JLQWL VXRWLRU D UHJLVWU
 P DWLWLQNDPX ODLNRWDUSLX SURF P;Q SDQ\JLQWL VXRWLRU D UHJLVWU
 NDLQD VXP Dã;MR SURF R G\]HOLQR àHP;V ÌNLXL ± NLW DãDOL
 SURF

0DãPHQLQ;V GHJDOÐ NDLQR
 P;Q PDã;MR 8\$% Ä/XNRLO /LH
)XHO 5HWDLO /LHWXYD³ 8\$
 8\$% Ä%DOWLF 3HWUROHXP³

ãDOLV	VDY	VDY	SRN\WLV	VDY	VDY	SRN\WLV
-------	-----	-----	---------	-----	-----	---------

0DãPHQLQ; G\]HOLQR NDLQD DQDOL]XRMDPX ODLNR
 WDUSLX VXP Dã;MR SURF FEFEROR \$ ±
 DXWRPRELOÐ GXMD ± SURF JHQRWLRU HOLQR àHP;V
 ÌNLXL ± SURF 3DO\JLQWL VXRWLRU D UHJLVWU
 ODLNRWDUSLX PDãPHQLQ; G\]HOLQR NDLQD SDGLG;MR
 SURF R G\]HOLQR àHP;V ÌNLXL ± SURF
 P YDVDULR P;Q QDIWRV R WQ LMD HULXMRU R
 ELUãRMH VXP Dã;MR SURF P;Q SDQ\JLQWL VXRWLRU D UHJLVWU
 1LXMRUNR ELUãRMH àYLHVL MD QDQV D EXYR SUHNLDXMDPD
 SR 86' (85 R P;QHV L R SDEDLJRMH
 NDLQD VXP Dã;MR LNL 86' 'DQLMD (85 Xã
 EDUHO³ 'LGãLRML %ULWDQLMD

7DUSWDXWLQ;V NHOLD WUDQVSRUWR V MXQJRV
 GXRPHQLPLV P YDVDULR URJMD SDEDLJRMH
 EHQ]LQDV \$ NDLP\QLQ;VH ãDOLV EXYR SLJHVQLV
 5XVLMRMH ± SURF %DOWDUXVLMRMH ± SURF
 R /HQNLMRMH ± SURF (VWLMRMH EHQ]LQDV \$
 DQDOL]XRMDPX ODLNRWDUSLX EXYR DOQLMD SURF EUDQJHVQLV
 QHJX /LHWXYRMH R /DWYLMRMH NDLQD QDQV R WLHN SDW NDLS
 /LHWXYRMH '\]HOLQDV DQDOL]XRMDPX ODLNRWDUSLX EXYR
 SLJHVQLV WLN 5XVLMRMH /DWLMRMH LU %DOWDUXVLMRMH

'\]HOLQR LU G\]HOLQR àHP;V ÌNLXL LHWXYD
 /LHWXYRMH LHM (85 O L XNVHPEXUJDV

'DWD	GLPHQL	PDãPHQL	GLPHQL	PDãPHQL
VDY ±				
VDY ±				
VDY ±				
VDY ±				
VDY ±				
VDY ±				
/DLNRWDUSLR SRN\WLV				
0HWÐ SRN\WLV				

0DNHGRQLMD
 0ROGRYD
 1RUYHJLMD
 1\GHUODQGDL
 3HUX
 3RUWXJDOLMD
 3UDQFijLMD
 5XPXQLMD
 5XVLMMD
 6HUELMD
 6ORYDNLMD
 6ORY;QLMD
 6XRPLMD
 àYHGLMD
 àYHLFDULMD
 7XUNLMD
 8NUDLQD
 8UXJYDMXV
 9HQJULMD

O\JLQDQW P VDYDLW VX VDY O\JLQDQW P P VDYDLW VV VV VDY
 P VDYDLWH ãDOWLQLV äË,.9& /ãË035,6 ãDOWDUXVLMRMH NHOLD WUDQV



ODLVWR SURGXNWÐ PDĀPHQLQĭ ULQND

āHPĭV ĪNLR LU PDLVWR SURGXNWÐ YLGXWLQĭV NDLQRV /LHWXYR
 ± P YDVDULR PĭQ SUDGĀLRMH (85 PDW YQW

3URGXNWÐV		ODWDYLPR	3RN\WL
		YLHQHWVDV ULDXV VDV DPJLQHV ERWÐ	
*HULDPDVLV SLHQĭV XPR	WHWUDSDNH	O	
SDVWHULXRWDV	SODVWLNQLDPH	DLĀHO\MH	
	ULHEXP	WHWUDSDNH	O
*HULDPDVLV SLHQĭV XPR	WHWUDSDNH	O	
DSGRURWDV 8\$ULHEXP	WHWUDSDNH	O	
.HI\UDV	ULHEXP	WHWUDSDNH	NJ
		SODVWLNQLDPH	DLĀHO\MH
*ULHWLQĭ	ULHEXP	± J SDNXRWĭMH	
9DUāĭV VĪULV	ULHEXP	NJ	
6YLVWDV	ULHEXP	NJ	
7HSXVLV ULHQĭV XPR	NDLS J SDNXRWĭMH		
PLĀLQĭV	DXJDOLQLÐ ULHEDÐ	NJ	
9DUāĭ	ULHEXP	± J SDNXRWĭMH	
	OLHVD	NJ	
	Gouda	NJ	
)HUPHQWLQĭ	ULHWLQĭ	NJ	
	Tilsit	NJ	
.LDXOLHQD	NXPSLV EH NDXOR	NJ	
	āRQLQĭ EH NDXOR	NJ	
9LāWLHQD	NHWYLUþLDL	NJ	
	EURLOHULV	NJ	
9LāWÐ NLDXĭ	NDWHJRULMRV	YQW	
	NDWHJRULMRV	YQW	
6LONĭV	QHLāGDULQĭWRV VX JDOYRPLMĭVĭWRV		
	ĭOĭ VĪU\PH	NJ	
-ĪULQĭV OĭXĀĀDOG\WRV	EH JDOYÐ	NJ	
0HQNĭV ĭOĭXĀĀDOG\WD		NJ	
.YLHWLQLDL	HNWUD UĭāLHWJ SDNXRWĭMH	NJ	
	PLQWDL	NJ SDNXRWĭMH	NJ
	DXNāPLDXVL	RWĭSDNXRWĭMH	NJ
	%±)	NJ SDNXRWĭMH	NJ
'XRQD	WDPVL	NJ	
	āYLHVL	NJ	
	EDWRQDV	NJ	
5\āLDL	SOLN\WL	NJ	
*ULNLÐ NUXRSRV		NJ	
0DQÐ NUXRSRV		NJ	
0DNDURQDL		NJ	
&XNUXV		NJ	
%XOYĭV	OLHWXYLāNRV VHQR GHUOLDXWJ	QHSODXWRV	,, NODVĭV
0RUNRV	OLHWXYLāNRV VHQR GHUOLDXWJ	SODXWRV	,, NODVĭV
	LPSRUWXRWV VHQR GHUOLDXWJ	SODXWRV	,, NODVĭV
%DOWDJĭāL	OLHWXYLāNL VHQR GHUOLDXWJ	,, NODVĭV	
NRSĭVWDL	LPSRUWXRWL VHQR GHUOLDXWJ	,, NODVĭV	
	UDXJLQWL	NJ	
\$JXUNDL	LOJDYDLVLDLPSRUWXRWL	,, NODVĭV	
3RPLGRUDL	LPSRUWXRWL	,, NODVĭV	NJ
6YRJĭQDL	OLHWXYLāNL JHOWRQLHML	,, NODVĭV	
	LPSRUWXRWL JHOWRQLHML	,, NODVĭV	
ŷHVQDNDL	LPSRUWXRWL	NJ	
2EXROLDL	LPSRUWXRWL	,, NODVĭV	NJ
*HULDPDVLV SLHQĭV XPR	EH SULHGÐ	O	
\$OLHMXV	UDSVÐ	O	
	VDXOĭJU āÐ	O	
0HGXV	QDWĪUDOXV VWLNOLQLDPH	DLĀHO\MH	
'UXVND	EH SULHGÐ	NJ	
	MRGXRWD	NJ	

lentelės tęsinys 35 psl.



34 psl. lentelės tęsinys

0DLVWR SURGXNWÐ DSUDãDV JHULDPDVLV SLHQDV ± EH SULHGÐ NYDSQLÐMÐ PHGãLDJÐ &
 VIULV ± EH SULHGÐ NPIQÐ GãLRYLQWÐ YDLVLÐ LU NW VXSDNXRWDV VYLHVWDV ± EH D.
 PLãLQ\V ± ODPLQXRWDPH DUED SHUJDPHQWLQQLDPH SRSLHULXMH YDUãNĩ ± EH SULHGÐ G
 J ODPLQXRWDPH SRSLHULXMH DUED SODVWLNQLQDPH PDLãHO\MH IHUPHQWLQQLDL VIUL
 DWãDOG\WD VXSDNXRWD DUED QHVXSDNXRWD YLãWLHQRV NHWYLUþLDL ± XããDOG\WL V
 YLãWÐ NLDXãLQQLDL ± YQW UXGL SRSLHULQ;VH DUED SODVWLNQLQ;VH SDNXRW;VH VLO
 ± SRSLHULQ;MH SDNXRW;MH GXRQD EDWRQDV ± EH VSHFLDOLÐ SULHGÐ GãLRYLQWÐ YD
 VSHFLDOLÐ SULHGÐ SRSLHULQ;MH DUED SODVWLNQLQ;MH SDNXRW;MH JULNLÐ NUXRSRV ±
 DUED SODVWLNQLQ;MH SDNXRW;MH PDNDURQDL ± VSDJHþLDL SORQLHML LU NLWL IRUPL
 GDUãRY;V ± QHVXSDNXRWRV UDXJLQWL NRSIVWDL ± VXSDNXRWL REXROLDL ± EHW NRNL
 EXWHO\MH DOLHMXV ± PDLVWLQLV SODVWLNQLQDPH EXWHO\MH GUXVND ± SODVWLNQLQ;M
 3DVWDERV NDLQRV NDLPR YLHWRYLÐ SDUGXRWXY;VH UHJLVWUXRMDPRV LNL NLHNYLHG
 QHQDXGRMDPRV DNFLMLQ;V NDLQÐ YHUW;V

ãDOWLQLV 35&6 /

ãHP;V ÌNLR LU PDLVWR SURGXNWÐ YLGXWLQ;V NDLQRV /LH
 ± P YDVDULR P;Q SUDGãLRMH (85 PDW YQW

3URGXNWÐV	ODWDYLPR	3RN\WLV
	YLHQHVWDV ULDXV YD V DR;QHV ERWÐ	
*HULDPDVLV	QDWIUDODXV ULHEXP	ãY LHãLD V NDUYLÐ SLHQDV
*ULHWLQ;	QDWIUDODXV ULHEXP	O
6YLHVWDV	EH DXJDOLQ;V NLOP;V ULHEDNÐ	
9DUãNĩ	QDWIUDODXV ULHEXP	NJ
9DUãN;V VIUQ	QDWIUDODXV ULHEXP	NJ
.LDXOLHQD	UÌ\WL ODãLQQLDL	NJ
	ãY LHãL ODãLQQLDL	NJ
	NXPSLV EH NDXOR	NJ
	VSUDQGLQ; EH NDXOR	NJ
-DXWLHQD	QXJDULQ; EH NDXOR	NJ
	NXPSLV EH NDXOR	NJ
9HUãLHQD	QXJDULQ; EH NDXOR	NJ
	NXPSLV EH NDXOR	NJ
9LãWLHQD	LãGDULQ;WD QHSDGDOLQWD	NJ JDEDOXV
.DODNXWLHQD	QDWIWLQ;O;V	NJ
9LãWÐ NLDXãLQQLDL	QHUHJLVWUXRWDV YLãWÐ DXJLQWRMÐ	
6Ì\WRV VLQHV	LãGDULQ;WRV VX JDOYRPLV	
6LONLÐ ;O;	VX RGD VIU\PH	NJ
-ÌULQ;V OÌGHNRV	DWãDOG\WRV EH JDOYÐ	NJ
0HQN;V ;O;	XããDOG\WD	NJ
.DUSLDL	J\YL	NJ
.DUãLDL	DWãDOG\WL LãGDULQ;WL	VXNJ DOYRPLV
6WHUNDL	DWãDOG\WL LãGDULQ;WL	VXNJ DOYRPLV
6WLQWRV	DWãDOG\WRV QHLãGDULQ;WRV	VX JDOYRPLV
6WULPHO;V	DWãDOG\WRV QHLãGDULQ;WRV	VX JDOYRPLV
0HGXV	QDWIUDOXV	NJ
%XOY;V	OLHWXYLãNRV VHQR GHUOLDXV	YLGXWLQLR G\GãLR
%XURN;OLD	OLHWXYLãNL	NJ
0RUNRV	OLHWXYLãNRV VHQR GHUOLDXV	QHSODXWRV
%DOWDJãLDL	OLHWXYLãNL NRSIVWDL	NJ
ãLHGLQLDL	UDXJLQWL	NJ
\$JXUNDL	WUXPSDYDLVLDL LPSRUWXRWL	NJ
	LOJDYDLVLDL LPSRUWXRWL	NJ
3RPLGRUDL	LPSRUWXRWL YLGXWLQLR G\GãLR	
6YRJ;QDL	OLHWXYLãNL YLGXWLQLR G\GãLR	
ýHVQDNDL	OLHWXYLãNL YLGXWLQLR G\GãLR	
	LPSRUWXRWL YLGXWLQLR G\GãLR	
2EXROLDL	OLHWXYLãNL YLGXWLQLR G\GãLR	
	LPSRUWXRWL YLGXWLQLR G\GãLR	

0DLVWR SURGXNWÐ DSUDãDV JHULDPDVLV SLHQDV ± SLOVWRPDV DUED SODVWLNQLQDPH
 DUED QHVXSDNXRWDV YDUãN; YDUãN;V VUUNVWL OXSDNLQXLDV DUED QHVXSDNXRWDV YLãWÐ
 DWãDOG\WD VYHULDPD QHVXSDNXRWD MDXWLHQD ± ãY LHãLD DWãDOG\WD VYHULDPD
 DQWLHQD ± ãY LHãLD QHVXSDNXRWD NDODNXWLHQRV NUIWLQ;O; ± ãY LHãLD QHVXSDNXR
 VLONLÐ ;O; ± QHVXSDNXRWD MÌULQ;V OÌGHNRV PHQN;V ;O; DWODQWLQ;V ODãLãRV N
 PHGXV ± SODVWLNQLQDPH DUED VLNOLQQLDPH LQGHO\MH EXOY;V PRUNRV EXURN;OLD
 SRPLGRUDL VYRJ;QDL þHVQDNDL ± QHVXSDNXRWD REXROLDL ± EHW NRNLRV YLHO;V
 3DVWDERV NDLQRV WXUJDYLHW;VH UHJLVWUXRMDPRV LNL HLQDPRMR P;QHVL R G WX

ãDOWLQLV 35&6 /



äHPĭV ĪNLR LU PDLVWR SURGXNWÐ YLGXWLQĭV NDLQRV /LHWX
± P YDVDULR PĭQ SUDGåLRMH (85 PDW YQW

3URGXNWDV		ODWDYLPR	3RN\WLV	
		YLHQ	HYD\VD	U\DX V Y\VD V DRĭQHVĪR WÐ
*HULDPDVL	WSDUMQD VQDWIUDODXV ULHEXP	O	äY LH äLDV	
*ULHWLQĭ	QDWIUDODXV ULHEXP	O		
6YLVHVDV	EH DXJDOLQĭV NLOPĭV ULHED	O		
9DUānĭ	QDWIUDODXV ULHEXP	NJ		
9DUānĭV VĪ	NDUYLÐ SLHQR QDWIUDODXV	NJ		
.LDXOLHQD	UĪN\WL ODāLQLDL	NJ		
	NXPSLV EH NDXOR	NJ		
	VSUDQGLQĭ EH NDXOR	NJ		
	QXJDULQĭ EH NDXOR	NJ		
9LāWLHQD	LāGDULQĭWD QHSDGDOLQWD	NJ	DEDOXV	
.DODNXWLH	QDĪWLQĭOĭV	NJ		
9LāWÐ NLDX	GHĀHQNLQWL QHUHJLVWUXR	NJ	YLāWÐ DXJLQWRMÐ	
0HGXV	QDWIUDOXV	NJ		
'XRQD	WDPVL EH SULHGÐ	NJ		
	āYLVHVL EH SULHGÐ	NJ		
%XOYĭV	VHQR GHUOLDXV	NJ		
0RUNRV	QHSODXWRV VHQR GHUOLDXW	NJ		
.RSĭVWDL	EDOWDJĭāLDL VHQR GHUOLDXW	NJ		
.RSĭVWDL	EDOWDJĭāLDL QDXMR GHUOLDXV	NJ		
.RSĭVWDL	EDOWDJĭāLDL UDXJLQWL	NJ		
%XURNĭOLD	YLGXWLQLR G\GāLR	NJ		
6YRJĭQDL	YLGXWLQLR G\GāLR	NJ		
ŷHVQDNDL		NJ		
2EXROLDL		NJ		

0DLVWR SURGXNWÐ DSUDāDV JHULDPDVLV SLHQDV ± SLOVWRPDV DUED SODVWLNQLQDPH
 QHVXSDNXRWDV YDUānĭ YDUānĭV VĪULV ± VXSDNXRWD DUED QHVXSDNXRWD UĪN\WL OD
 VYHULDPD QHVXSDNXRWD YLāWLHQD DQWLHQD WULXāLHQD ± āYLVHLD DWāDOG\WD Q
 SODVWLNQLQDPH DUED VWNOLQDPH LQGĪRUVNRG XPDOWÐ JĭHDL NRSĭQW ÐKS DNXRMDL ES
 ± QHVXSDNXRWL REXROLDL ± EHW NRNRV YHLVOĭV QHVXSDNXRWL
 3DVWDERV NDLQRV WXUJDYLHWĭVH UHJLVWUXRMDPRV LNL HLQDPRMR PĭQHVL R G WX

āDOWLQLV äĪĪ,3\$&6 /

ĒNLQLÐ J\YĪQÐ LU MDYÐ YLGXWLQĭV NDLQRV /LHWXYRV W
± P YDVDULR PĭQ SUDGåLRMH (85 PDW YQW

3URGXNWDV		ODWDYLPR	3RN\WLV	
		YLHQ	HYD\VD	U\DX V Y\VD V DRĭQHVĪR WÐ
*DOYLMDL	SULHDXJOLV LNL PĭQ LPWLQD	O		
*DOYLMDL	WHO\PLRV QXR PĭQ LNL DSVLYHU	O	āLDYLPR	
	NDUYĭV QXR PĭQ EHQW NDUY	O	DSVLYHU	āLDYXVLRV
3DUāHOLDL	LNL PĭQ	YQW		
.LDXOĭV	± PĭQ	YQW		
	QXR PĭQ	YQW		
2āLDL		YQW		
2āNRV	RāNLQJRV RāNDYHGĭV	YQW		
	RāNÐ SULHDXJOLV ± PĭQ	YQW		
\$YLQDL		YQW		
\$Y\V	ĭULQJRV ĭULDYHGĭV	YQW		
ULXNDL	DYLÐ SULHDXJOLV ± PĭQ	YQW		
7ULXāLDL	± PĭQ	YQW		
	± PĭQ	YQW		
9LāWRV LU	QXLRG āPQ	YQW		
.YLHĭLDL		NJ		
0LHāLDL	PDLVWLQLDL DUED SDāDULQLDL	NJ		
\$YLāRV	± NJ PDLāXRVH	NJ		
		NJ		

3DVWDERV NDLQRV UHJLVWUXRMDPRV HLQDPRMR XRPĭQDPV LHRV \$MĪH PU MĪJ LLUV DQ RMDNPD VSLYUPLLQ
 NDLQD EH QXRODLGÐ

O\JLQDQW P YDVDULR PĭQ VX VDXVLR PĭQ
 O\JLQDQW P YDVDULR PĭQ VX P YDVDULR PĭQ

āDOWLQLV äĪĪ,3\$&6 /



3LHQR SURGXNWÐ YLGXWLQ;V PDåPHQLQ;V NDLQRV /LHWXYRV GLG

3URGXNWÐV			ODWDYL PR YQW	9LGXWLQ; VYHUWLQ; NDLQD (85 PDW YQW 3RN\WLV			VDYDR;VH\PLRWÐ VDYVVDYVVDY** *** ****				
*HULD SLHQDV	SDVWHULXRWD	WHWUDSDNH	O	EH DNFLMÐ							
	EH SULHGÐ ULHEXP	SODVWLNQLDPH	PDLäHO\MH	akciné	0,80	0,79	-	0,77	-	-2,53	-3,75
	NYDSLDMÐ	SODVWLNQLDPH	PDLäHO\MH	EH DNFLMÐ							
	PHGäLDJÐ	WHWUDSDNH	O	EH DNFLMÐ							
.HI\UDV	LU SDQ	ULHEXP		akciné	0,78	0,81	0,87	0,75	-13,79	-7,41	-3,85
	O SDNXRWiMH	SODVWLNQLDPH	PDLäHO\MH	EH DNFLMÐ							
	ULHEXP	SODVWLNQLDPH	PDLäHO\MH	akciné	0,62	0,88	-	-	-	-	-
	± NJ	WHWUDSDNH	NJ	EH DNFLMÐ							
*ULHWLQ;V	ULHEXP		NJ	EH DNFLMÐ							
	± ULHEXP	SROLVWLUHQRLQGHOMH	NJ	akciné	3,04	2,73	3,43	4,04	17,78	47,99	32,89
			NJ	EH DNFLMÐ							
			NJ	akciné	-	2,39	2,25	2,48	10,22	3,77	-
9DUäni viULV	EH SULHGÐ ULHEXP	VXSDNXRWÐV	NJ	EH DNFLMÐ							
	YDLVLÐ	ULHEXP		NJEH DNFLMÐ							
	QDWiUDQXN\UXV		NJEH DNFLMÐ								
	WÐV	JHULDPM3± J		EH DNFLMÐ							
-RJXUWÐV	VX SULHGÐ ULHEXP	SROLVWLUHQRLQGHOMH		akciné	-	2,32	2,26	-2,59	-	-	
			NJ	EH DNFLMÐ							
			NJ	akciné	8,20	8,29	6,59	7,10	7,74	-14,35	-13,41
			NJEH DNFLMÐ								
7HSXV ULHEDÐ PLälQV	QH GDXJLÐX J SHUJDPHQWLQDPH DUEÐ	SRSLSLHULXMH	NJ	EH DNFLMÐ							
	NDLS ODPLQXRWDPH										
	DXJDOLQLÐ										
	ULHEDÐ			akciné	7,22	4,95	-	-	-	-	-
6DOGLQWÐV VXWLUäWUQMDXPR SLHQDV	ULHEXP		NJ	EH DNFLMÐ							
			NJ	akciné	3,16	3,79	3,38	3,38	0,00	-10,82	6,96
			NJ	EH DNFLMÐ							
			NJ	akciné	3,06	3,05	3,24	3,41	5,25	11,80	11,44
)HUPH WLQLV	Gouda, QHVXSMDXVW\WÐV		NJ	EH DNFLMÐ							
	ULHNHOiPLV			akciné	6,00	6,07	5,88	5,95	1,19	-1,98	-0,83
	ULHWDVLV QHVXSMDXVW\WÐV		NJEH DNFLMÐ								
	ULHNHOiPLV		NJEH DNFLMÐ								
	Tilsit, QHVXSMDXVW\WÐV										
	ULHNHOiPLV										

P VDY LU P VDY QXURG\WRV SURF ULHEXP JULHWLQ;V LU SURF

3DXNäWLHQRV SURGXNWÐ LU NLDXälQLÐ YLGXWLQ;V PDåPHQLQ;V NDLQRV

3URGXNWÐV			ODWDYL PR YQW	9LGXWLQ; VYHUWLQ; NDLQD (85 PDW YQW 3RN\WLV			VDYDR;VH\PLRWÐ VDYVVDYVVDY** *** ****		
9LäWLHQRV	VXSDNXRWL DUEÐ	NJEH DNFLMÐ							
NHWYLUPLDL	QHVXSDNXRWL								
9LäpLXNDV	QHVXNDSRWDV	NJEH DNFLMÐ							
DU	VXSDNXRWÐV DUEÐ								
YLäpLXNDV	QHVXSDNXRWÐV	NJEH DNFLMÐ							
EURLOHULV	QHVXNDSRWDV								
9LäWLHQRV		NJEH DNFLMÐ							
NUIWLQ;O;V									
.DODNäYLHäLRV	VXSDNXRWV DUEÐ								
WLHQRV	QHVXSDNXRWV	NJEH DNFLMÐ							
NUIWLQ;O;V									
1DUYXRVHNDWHJRULMD		YQW							
ODLNRPÐ	3SDNXRWL 3 SRSLSLHULQHV								
YLäWÐ	DUEÐ SODVWLNQLDPH								
NLDXälQLDL	QW SDNXRWHV								
		akciné	1,29	0,81	0,96	0,98	2,08	20,99	-24,03



0jVRV SURGXNWÐ YLGXWLQ;V PDâPHQLQ;V NDLQRV /LHWXYRV GLGâ

3URGXNWÐV		0DWDYL PR YQW	9LGXWLQ; VYHUWLQ; NDLQD (85 PDW YQW 3RNWLV) VDYDR;Q;H;P;L;R;W;Ð VDYVDYVDYVDY** *** ****						
.LDXOLHQB	NXPSLV VX NDXOX	NJEH DNFLMÐ							
	NXPSLV EH NDXOR	NJEH DNFLMÐ							
	YLSUDQGLQ; VYSDNXRWRV	NJEH DNFLMÐ							
	DUED QHVSXSDNXRWRV	NJEH DNFLMÐ							
	DUED QHVSXSDNXRWRV	NJEH DNFLMÐ							
*DOYLMFLHQB	NXPSLV VX NDXOX	NJEH DNFLMÐ							
	NXPSLV EH NDXOR	NJEH DNFLMÐ							
	YLSUDQGLQ; VYSDNXRWRV	NJEH DNFLMÐ							
	DUED QHVSXSDNXRWRV	NJEH DNFLMÐ							
	DUED QHVSXSDNXRWRV	NJEH DNFLMÐ							
'HâUD	NLDXOLHQB	NJEH DNFLMÐ							
	LU DUED	akcinē 4,35 3,59 4,88 3,37 -30,94 -6,13 -22,53							
	MDXWLHQB	NJEH DNFLMÐ							
	LU DUED	akcinē 3,28 4,30 5,38 4,64 -13,75 7,91 41,46							
	YLâWLHQB	NJEH DNFLMÐ							
0jVRV NRQVHUYDL	WURâNLQWD	NJEH DNFLMÐ							
	WURâNLQWD	NJEH DNFLMÐ							
	WURâNLQWD	NJEH DNFLMÐ							

%XOYLD GDUâRYLD LU YDLVLÐ YLGXWLQ;V PDâPHQLQ;V NDLQRV /LHWXYRV

3URGXNWÐV		0DWDYL PR YQW	9LGXWLQ; VYHUWLQ; NDLQD (85 PDW YQW 3RNWLV) VDYDR;Q;H;P;L;R;W;Ð VDYVDYVDYVDY** *** ****						
%XOYi	OLHWXYLâNL NODVLD	NJEH DNFLMÐ							
	VHQR GHUOLDXV	akcinē - 0,32 0,31 - - - -							
%XURNi	OLHWXYLâNL NODVLD	NJEH DNFLMÐ							
	YLVÐ NODVLD	akcinē 0,78 0,90 - 0,98 - 8,89 25,64							
0RUNR	OLHWXYLâNL NODVLD	NJEH DNFLMÐ							
	VHQR GHUOLDXV	NJEH DNFLMÐ							
%DOWNRSiV	OLHWXYLâNL NODVLD	NJEH DNFLMÐ							
	VHQR GHUOLDXV	NJEH DNFLMÐ							
7UXPSD	OLHWXYLâNL NODVLD	NJEH DNFLMÐ							
	YDLVLÐ	akcinē 1,59 - 1,70 1,57 -7,65 - -1,26							
3RPLG	OLHWXYLâNL NODVLD	NJEH DNFLMÐ							
	YDLVLÐ	NJEH DNFLMÐ							
6YRJi	OLHWXYLâNL NODVLD	NJEH DNFLMÐ							
	VHQR GHUOLDXV	akcinē - 0,32 0,31 0,30 -3,23 -6,25 -							
2EXROLDL	OLHWXYLâNL NODVLD	NJEH DNFLMÐ							
	YLVÐ NODVLD	akcinē 0,41 0,76 0,66 - - - -							
Bananai	YLVÐ NODVLD	NJEH DNFLMÐ							



*UİĞÐ SURGXNWÐ YLGXWLQİV PDâPHQLQİV NDLQRV /LHWXYRV GLGâL

3URGXNW DV			0DWDYL PR YQW	9LGXWLQİ VYHUWLQİ NDLDQ (85 PDW YQW 3RİN\WL V							
				VDYDYVDYVDY			VDYDRİQİH\PLRWÐ	***	***		
				VDYDYVDYVDY			**	***	***		
.YLHWLQLDL PLOWDL	ekstra UİäLHV (% ±)	NJ SRSLHULQİMH SDNXRWİMH	NJEH DNFLMÐ								
		NJ SRSLHULQİMH SDNXRWİMH	NJEH DNFLMÐ	akcinë	0,57	-	0,57	0,73	28,07	-	28,07
	DXNäpLDXVLRV UİäLHV (% ±)	NJ SRSLHULQİMH SDNXRWİMH	NJEH DNFLMÐ								
		NJ SRSLHULQİMH SDNXRWİMH	NJEH DNFLMÐ								
'XRQD	WDPVL	EH VSHFLDOLÐ SULHGÐSRSLHULQİMH GâLRYLSODVWLNLQİMH	NJEH DNFLMÐ	akcinë	1,28	1,32	1,34	1,37	2,24	3,79	7,03
	äYLHV	YDLVLÐSDNXRWİMH	NJEH DNFLMÐ	akcinë	1,22	1,03	0,85	1,11	30,59	7,77	-9,02
	EDWRQDV	ULHäXWÐ LU NW	NJEH DNFLMÐ	akcinë	1,44	1,47	1,55	1,48	-4,52	0,68	2,78
5\äLDL	EH VSHFLDOLÐ SULHGÐSRSLHULQİMH SDNXRWİMH	SODVWLNLQİMH DUED SODVWLNLQİMH NJEH DNFLMÐ									
0DNDU	VSDJHþLDL SODVWLNLQİMH IRUPLQLDL LU NW	SDNXRWİMH	NJEH DNFLMÐ	akcinë	1,43	1,00	1,10	1,03	-6,36	3,00	-27,97
*ULNLÐ NUXRSRV	QHVNDOG\WRV		NJEH DNFLMÐ	akcinë	1,63	1,60	2,10	-	-	-	-
0DQÐ NUXRSRV			NJEH DNFLMÐ								
\$YLâLQİV NUXRSRV	SRSLHULQİMH SDNXRWİMH	DUED SODVWLNLQİMH NJEH DNFLMÐ									
0LHâLQİV NUXRSRV			NJEH DNFLMÐ								
3HUOLQİV NUXRSRV			NJEH DNFLMÐ								
6NDOG\WL äLUQLDL			NJEH DNFLMÐ								

äXYÐ SURGXNWÐ YLGXWLQİV PDâPHQLQİV NDLQRV /LHWXYRV GLGâL

3URGXNW DV			0DWDYL PR YQW	9LGXWLQİ VYHUWLQİ NDLDQ (85 PDW YQW 3RİN\WL V							
				VDYDYVDYVDY			VDYDRİQİH\PLRWÐ	***	***		
				VDYDYVDYVDY			**	***	***		
-İULQİV OİGHNRV	äâDOG\WRV	EH SODVWLNLQİMH PDLâHO\MH	NJEH DNFLMÐ	akcinë	3,41	2,64	3,58	-	-	-	-
\$WODQVLRV ODâLâRV	QXR LNL	NJ QHVXSDNXRWİMH	NJEH DNFLMÐ								
0HQNİV XâDOG\WD		SODVWLNLQİMH PDLâHO\MH	NJEH DNFLMÐ								
6WULP HOLMâLRV	QHLâGDULQİWRV		NJEH DNFLMÐ								
.DUSLDYL DUED äYLHâLDL	SDVNHUVMJ		NJEH DNFLMÐ								
6İG\WRV VLONİV	QHLâGDULQİWRV	VX JDOYRPLM QHVXSDNXRWİMH	NJEH DNFLMÐ								
6LONİV QDQİUDOL	VX RGD VIU\PH		NJEH DNFLMÐ								
-İULQLDL HâHULDL	DUâWDL UİN\WL		NJEH DNFLMÐ	akcinë	-	6,18	6,35	5,90	-7,09	-4,53	-
6NXPE PLOWDL	UİN\WRV	VXSDNXRWİMH QHVXSDNXRWİMH	DUED SODVWLNLQİMH NJEH DNFLMÐ								
äXYÐ NRQVHUYDL	âSURWDL	± J	NJEH DNFLMÐ								
DOLHM VNXPEUİV		SDNXRWİMH	NJEH DNFLMÐ								

.LWÐ PDLVWR SURGXNWÐ YLGXWLQ;V PDâPHQLQ;V NDLQRV /LHWXYRV

3URGXNWÐV		0DWDYL PR YQW	9LGXWLQ; VYHUWLQ; NDLQD (85 PDW YQW 3RN\WLV			VDYDLW;V\PLRW Ð				
			VDYDYDYDYDY			**	***	***		
&XNUX	SRSLHULQ;MH DUED SODVWLNLOQDPH	EH DNFLMÐ	akciné	0,58	0,69	0,62	0,69	11,29	0,00	18,97
*HULD YDQGX	PDYLV QHJD]XRWDV	EH DNFLMÐ	akciné	0,26	0,28	-	0,30	-	7,14	15,38
0DLVW DOLHM	UDSVÐ LQLV XV VDXO;JU áÐ	± O SODVWLNLOQDPH	akciné	1,31	1,68	2,18	2,42	11,01	44,05	4,76
0HG XV	QDWiUDOXV	SODVWLNLOQDPH LQGHO\MH	EH DNFLMÐ							
'UXVND	MRGXRD EH SULHGÐ	SRSLHULQ;MH DUED SODVWLNLOQ;MH SDNXRW;MH	akciné	-	0,26	-	0,28	-	7,69	-
			akciné	-	0,25	-	0,27	-	8,00	-

NDLQRV UHJLVWUXRMDPRV 9LOQLDXV .DXQR .ODLS;GROD]BPH;NAREBILSUKLNDERS\WD
 WLQNOÐ SDUGXRWXY;VH \$\$VNDLpLXRMDQW YLGXWLQHV VYHUWLQHV SURGXNWÐ NDLQDV
 O\JLQDQW P VDYDLW VX VDYDLWH
 O\JLQDQW P VDYDLW VX VDYDLWH
 O\JLQDQW P VDYDLW VX P VDYDLWH

âDOWLQLV äË,.9& /äË035,

âDOWLQLÐ VXWUXPSLQLPDL

\$0\$	± \$JUDUPDUNW \$XVWULD \$XVWULMD
\$0,	± \$JUDUPDUNW ,QIRUPDWRQV 9RNLHWLMD
(.	± (XURSRV .RPLVMD
(.,	± (HVWL .RQM XQNWXUULLQVWLWXXW (VWLMD
(85267\$7	± 7KH 6WDWLWVWLFDO2vFH RI WKH (XURSHDQ &RPPXQLWLHV
,* &	± ,QWHUQDWLRQDO *UDLQV &RXQFLO ' %ULWDQLMD
/'\$\$	± /LHWXYRV GDUâRYLÐ DXJLQWRMÐ DVRFLDFLMD
/9\$(,	± /DWYLMDV 9DOVWV \$JUDUDV (NRQRPLNDV ,QVWLWXWV /DWY
/äË.7	± /LHWXYRV âHP;V ÌNLR NRQVXOWDYLRP WDUQ\ED
/äË0355\$	± /LHWXYRV âHP;V ÌNLR LU PDLVWR SURGXNWÐ ULQNRV UHJXO
/äË035,6	± /LHWXYRV âHP;V ÌNLR LU PDLVWR SURGXNWÐ ULQNRV LQIRUP
10\$	± 1DFLRQDOLQ; PRN;MLPR DJHQWiUD
1ä7	± 1DFLRQDOLQ; âHP;V WDUQ\ED
6'\$,6	± 6XSLUN;MÐ GXRPHQÐ DSGRURMLPR LQIRUPDFLQ;V VLVWHPRV
67'	± /LHWXYRV 6WDWLWVWLNRV GHSDUWDPHQWV
9097	± 9DOVW\ELQ; PDLVWR LU YHWHULQDULMRV WDUQ\ED
=65,5	± =LQWHJURZDQ\ 6\WVHP 5ROQLF]HM ,QIRUPDFML 5\QNRZHM /H
äË,.9&	± 9² âHP;V ÌNLR LQIRUPDFLMRV LU NDLPR YHUVOR FHQWUDV
äË0	± /LHWXYRV 5HVSXEOLNRV âHP;V ÌNLR PLQLVWHULMD
äË5	± äHP;V ÌNLR UÏPDL
86'\$	± 8QLWHG 6WDWHV 'HSDUWPHQW RI \$JULFXOWXUH -\$9

.RSLMDYLPDV DU SXEOLNDYLPDV YLVR OHLGLQLR DU MR GDOLHV EH UDâWLäNR

(Ä\$JUR 5,1.\$³	(O SDâWDV DJURULQND#YLF OW
/HLG;MDV 9² âHP;V ÌNLR LQIRUPDFLMRV	KWWS ZZZ YLF OW ULV
NDLPR YHUVOR FHQWUDV	7LUDâDV HJJ
9LQFR .XGLUNRV J 9LOQLXV	6SDXVGLQR 9² âHP;V ÌNLR LQIRUPDFLM
7HO	9LQFR .XGLUNRV J /7 9LOQLXV