

/(,78926 5(638%/ ,.26 ä(0 6 Ę.,2 0,1,67(5,-\$
9² ä(0 6 Ę.,2 ,1)250\$&,-26 ,5 .\$,02 9(56/2 &(175\$6
/(,78926 ä(0 6 Ę.,2 ,5 0\$,672 352'8.7Ī 5,1.26 ,1)250\$&,1 6,67(0\$

Agro RINKA

,661

'9,6\$9\$,7,1,6 2), &,\$/86,6 ,1)250\$&,1,6 67\$7,67,1,6 /(',',1

P ODSNULP LR G

1 U

785,1 < 6



*UİĞĐ UDSVĐ LU SDăDUĐ ULQND



3LHQR LU SLHQR JDPLQLĐ ULQN

%XOYLĐ GDUăRYLĐ LU YDLVLĐ

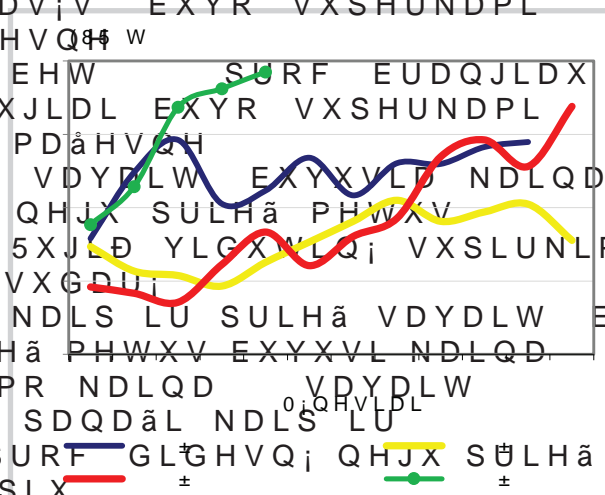
.LDXOLHQRV MDXWLHQRV LU DYLHQRV HUKQND RV ULQND



3DXNăWLHQRV LU NLDXăLQLĐ ULQND 0DLVWR SURGXNWĐ PDăPHQLQ;

*UİĞĐ UDSVĐ LU SDăDUĐ ULQND

/LHWXYRMH äLĐ PHWĐ ODSPRULP LR P;QHVLRS DOLR P;QHV³
DQWURMH SXV;MH NYLHPLĐ YLGXWLQV W VİĞĐ UNLPR SURF PDă
NDLQD WROLĐ MWGLYR;MRJUİĞĐ QXSKUNLPR DQDORJLăNX ODLNR
³PRQ;VHP VDYDLW ± NYLHPLĐ W HWXYRV JUİĞĐ VXSLU
EXYR VXSHUNDPL YLGXWLQLăNHLVSRUWDYR(85/WW±LM 9RNLHW
SURF GLGHVQH NDLQD SDO\$JLQWL VX SULHă VDYDLW; NDLQ
VDYDLW ± EXYXVLFNDLQD DEHWİNVW W EXYR HNVSRU
GLGHVQH NDLQD QHJX PSULHă PHWXV W VLQIV SVO
VDYDLW ± \$QDOLJXRMDPX ODLNRWDUSLX
SDăDULQLDL PLHăLDL ,, NODV;V 5XJLĐ NDLPORV/LHWXYRMH (85
YLGXWLQLăN(85 SR±SURF PDăHVQH W
NDLQD QHJX SULHă VDYDLW EHW SURF EUDQJLDX
QHJX SULHă PHWXV .YLHWUXJLDL EXYR VXSHUNDPL
YLGXWLQLăN(85 SR± SURF PDăHVQH
NDLQD SDO\JLQWL VX SULHă VDYDLW EXYXVLĐ NDLQD
EHW SURF GLGHVQH NDLQD QHJX SULHă PHWXV
DWLWLQNDPX ODLNRWDUSLX 5XJLĐ YLGXWLQ; VXSLUNLPR
NDLQD äLĐ PHWĐ VDYDLW ± VXGDUI
LU WDL EXYR SDQDăL NDLQD NDLS LU SULHă VDYDLW EHL
SURF GLGHVQ; QHJX SULHă PHWXV EXYXVLĐ NDLQD
5DSVĐ YLGXWLQ; VXSLUNLPR NDLQD VDYDLW
VXGDUI (85 W ± LăOLNR SDQDăL NDLS LU
VDYDLW EHL EXYR QHW SURF GLGHVQ; QHJX SULHă
PHWXV WXR SDPLX ODLNRWDUSLX ±
/LHWXYD P VSDOLR P;QHVLRS DOLR P;QHV³ NDLPORV/LHWXYRMH (85
PDăLDX JUİĞĐ/LHWXYD RWDJUİĞĐ VXSLUNLPR äDOWİEQ LQ& /ăĘ035,6





*UĪGÐ LU UDSVÐ YLGXWLQ;V VDYDLW;V PHWÐ /LHWXYRMH (85 W EH 390

| *UĪGDL | 'DWD | | | | 3RN\WLV | | | |
|--------------|------|------|------|------|---------|------|---------------|------|
| | VDY | | ±VDY | | ±VDY | | VDYDLW;V PHWÐ | |
| | EH | 13\X | 13EH | 13\X | 13EH | 13\X | 13EH | 13\X |
| .YLHþLDDL | | | | | | | | |
| HNWUD | | | | | | | | |
| , NODV;V | | | | | | | | |
| ,, NODV;V | | | | | | | | |
| ,,, NODV;V | | | | | | | | |
| ,9 NODV;V | | | | | | | | |
| 5XJLDDL | | | | | | | | |
| , NODV;V" | " | " | " | " | " | | | |
| ,, NODV;V | | | | | | | | |
| 0LHåLDDL | | | | | | | | |
| , NODV;V" | " | " | " | | | | | |
| ,, NODV;V | | | | | | | | |
| VDO\NOLQLDDL | | " | " | | | | | |
| \$YLåRV | | " | " | | | | | |
| *ULNLDDL | | | | | | | | |
| .YLHWUXJLDDL | | | | | | | | |
| .XNXU;JDDL | | | | | | | | |
| åLUQLDDL | | | | " | " | | | |
| 3XSRV | | | | | " | " | | |
| 5DSVDL | | | | | | | | |
| /LQÐ V;PHQ;V | | | | | " | " | | |

NDLQD EH QXRVNDLWÐ SULHå YDO\ P LU GåLRYLQLP LU SULHPRNRPLV /åĒ035,6
 NDLQD VX QXRVNDLWRPLV SR YDO\ PR LU GåLRYLQLPR LU SULHPRNRPLV
 O\JLQDQW P VDYDLW VX VDYDLWH
 O\JLQDQW P VDYDLW VX P VDYDLWH
 " ± NRQ;GHQFLDO;V GXRPHQ;V
 3DVWDED *UĪGÐ EHL DOLHMLQLÐ DXJDOÐ V;NOÐ LU VDYDLþLÐ VXSLUNLPR NDLQRV S

*UĪGÐ LU UDSVÐ VXSLUNLPDV /LHWXYRV ³PRQ;VH iš augintoju

| *UĪGDL | 'DWD | | | | 3RN\WLV | | | |
|--------------|--------|--|-------------------|--|---------|--|---------------|--|
| | VSDOLV | | UXJSM;WLW;XJV;MLV | | VSDOLV | | P;QHVL R PHWÐ | |
| .YLHþLDDL | | | | | | | | |
| HNWUD | | | | | | | | |
| , NODV; | | | | | | | | |
| ,, NODV; | | | | | | | | |
| ,,, NODV; | | | | | | | | |
| ,9 NODV; | | | | | | | | |
| VSHOWD | | | | | | | | |
| 5XJLDDL | | | | | | | | |
| , NODV; | | | | | | | | |
| ,, NODV; | | | | | | | | |
| 0LHåLDDL | | | | | | | | |
| , NODV; | | | | | | | | |
| ,, NODV; | | | | | | | | |
| VDO\NOLQLDDL | | | | | | | | |
| \$YLåRV | | | | | | | | |
| *ULNLDDL | | | | | | | | |
| .YLHWUXJLDDL | | | | | | | | |
| .XNXU;JDDL | | | | | | | | |
| åLUQLDDL | | | | | | | | |
| 3XSRV | | | | | | | | |
| 5DSVDL | | | | | | | | |
| ,å YLVR | | | | | | | | |

O\JLQDQW P VSDOLR P;Q VX P UXJV;MR P;Q åDOWåEQ;V /åĒ035,6
 O\JLQDQW P VSDOLR P;Q VX P VSDOLR P;Q



*UĪGÐ LU UDSVÐ YLGXWLQjV VXSLUNLPR NDLQRV iš augintojų ir kitų vidaus r
/LHWXYRMH (85 W EH 390

| *UĪGÐL | 'DWD | | | | | | | | | | | | 3RN\WLV | | | | | |
|--------------|--------|------|------|------|------|------|-------------------|------|------|------|------|------|---------|------|------|---------------|----|--|
| | VSDOLV | | | | | | UXJSMĪWLWUXJVjMLV | | | | | | VSDOLV | | | PjQHVL R PHWÐ | | |
| | EH | 13VX | 13EH | 13VX | 13EH | 13VX | 13EH | 13VX | 13EH | 13VX | 13EH | 13VX | 13EH | 13VX | 13EH | 13VX | 13 | |
| .YLHþL DL | | | | | | | | | | | | | | | | | | |
| HNWUD | | | | | | | | | | | | | | | | | | |
| , NODVj | | | | | | | | | | | | | | | | | | |
| ,, NODVj | | | | | | | | | | | | | | | | | | |
| ,,, NODVj | | | | | | | | | | | | | | | | | | |
| ,9 NODVj | | | | | | | | | | | | | | | | | | |
| VSHOWD | | | | | | | | | | | | | | | | | | |
| 5XJL DL | | | | | | | | | | | | | | | | | | |
| , NODVj | | | | | | | | | | | | | | | | | | |
| ,, NODVj | | | | | | | | | | | | | | | | | | |
| 0LHåL DL | | | | | | | | | | | | | | | | | | |
| , NODVj | | | | | | | | | | | | | | | | | | |
| ,, NODVj | | | | | | | | | | | | | | | | | | |
| VDO\NOLQLDL | | | | | | | | | | | | | | | | | | |
| \$YLåRV | | | | | | | | | | | | | | | | | | |
| *ULNL DL | | | | | | | | | | | | | | | | | | |
| .YLHWUXJL DL | | | | | | | | | | | | | | | | | | |
| .XNXUĭjDL | | | | | | | | | | | | | | | | | | |
| äLUQLDL | | | | | | | | | | | | | | | | | | |
| 3XSRV | | | | | | | | | | | | | | | | | | |
| 5DSVDL | | | | | | | | | | | | | | | | | | |

O\JLQDQW P VSDOLR PjQ VX P UXJVjMR PjQ åDOVåĒQ L9& /åĒ035,6
 O\JLQDQW P VSDOLR PjQ VX P VSDOLR PjQ
 ± NRQžGHQFLDOĭV GXRPHQ\V

*UĪGÐ LU DOLHMLQLÐ DXJDOÐ VjNOÐ SHUGLUELPDV /LH

| *UĪGÐL | 'DWD | | | | | | | | | | | | 3RN\WLV | | | | | |
|--------------|--------|------|------|------|------|------|-------------------|------|------|------|------|------|---------|------|------|---------------|----|--|
| | VSDOLV | | | | | | UXJSMĪWLWUXJVjMLV | | | | | | VSDOLV | | | PjQHVL R PHWÐ | | |
| | EH | 13VX | 13EH | 13VX | 13EH | 13VX | 13EH | 13VX | 13EH | 13VX | 13EH | 13VX | 13EH | 13VX | 13EH | 13VX | 13 | |
| .YLHþL DL | | | | | | | | | | | | | | | | | | |
| HNWUD | | | | | | | | | | | | | | | | | | |
| , NODVj | | | | | | | | | | | | | | | | | | |
| ,, NODVj | | | | | | | | | | | | | | | | | | |
| ,,, NODVj | | | | | | | | | | | | | | | | | | |
| ,9 NODVj | | | | | | | | | | | | | | | | | | |
| VSHOWD | | | | | | | | | | | | | | | | | | |
| 5XJL DL | | | | | | | | | | | | | | | | | | |
| , NODVj | | | | | | | | | | | | | | | | | | |
| ,, NODVj | | | | | | | | | | | | | | | | | | |
| 0LHåL DL | | | | | | | | | | | | | | | | | | |
| , NODVj | | | | | | | | | | | | | | | | | | |
| ,, NODVj | | | | | | | | | | | | | | | | | | |
| VDO\NOLQLDL | | | | | | | | | | | | | | | | | | |
| \$YLåRV | | | | | | | | | | | | | | | | | | |
| *ULNL DL | | | | | | | | | | | | | | | | | | |
| .YLHWUXJL DL | | | | | | | | | | | | | | | | | | |
| .XNXUĭjDL | | | | | | | | | | | | | | | | | | |
| äLUQLDL | | | | | | | | | | | | | | | | | | |
| 3XSRV | | | | | | | | | | | | | | | | | | |
| 5DSVDL | | | | | | | | | | | | | | | | | | |
| /LQÐ VjPHQ\V | | | | | | | | | | | | | | | | | | |
| ,å YLVR | | | | | | | | | | | | | | | | | | |

O\JLQDQW P VSDOLR PjQ VX P UXJVjMR PjQ åDOVåĒQ L9& /åĒ035,6
 O\JLQDQW P VSDOLR PjQ VX P VSDOLR PjQ



*UÏGÐ LU DOLHMLQLÐ DXJDOÐ V;NOÐ DWVDUJRV /LHW

| *UÏGDL | 'DWD | | 3RN\WLV | |
|--------------|--------|------------------|---------|--------------|
| | VSDOLV | UXJSM\WL\XJV;MLV | VSDOLV | P;QHVLR PHWÐ |
| .YLHþLDL | | | | |
| HNWUD | | | | |
| , NODV; | | | | |
| ,, NODV; | | | | |
| ,,, NODV; | | | | |
| ,9 NODV; | | | | |
| VSHOWD | | | | |
| 5XJLDL | | | | |
| , NODV; | | | | |
| ,, NODV; | | | | |
| 0LHåLDL | | | | |
| , NODV; | | | | |
| ,, NODV; | | | | |
| VDO\NOLQLDL | | | | |
| \$YLåRV | | | | |
| *ULNLDL | | | | |
| .YLHWUXJLDL | | | | |
| .XNXU;JDL | | | | |
| åLUQLDL | | | | |
| 3XSRV | | | | |
| 5DSVDL | | | | |
| /LQÐ V;PHQ\V | | | | |
| , å YLVR | | | | |

DWVDUJRV DWLWLQNDPR P;QHVLR SDEDLJRMH åDOWåEQ19& /åË035,6
 ** O\JLQDQW P VSDOLR P;Q VX P UXJV;MR P;Q
 O\JLQDQW P VSDOLR P;Q VX P VSDOLR P;Q

(VWLM /HQNLM 7XQLV \$Oå\UP;QHV\$(-YH EXWRQH NMSLQDWXRWL 3
 ± (85 W %HYHLN SURKV9MNRWLM 'DQLM LU (JLSW åL
 VXGDU; SDåDULQLDL PLHåLDL ,, NODV; W \$YSåSåLå PHWÐ85 W
 VSDOLR P;QHV³ EXYRW\NWSR MWXRVBVD P VSDOLR P;QHV³
 HNVSRUWXRWL³ /DWYLM /HQNLM WINV\WWM ± LU ,WSDRM PD
 YLGXWLQ; NDLQD ± (85 W QHJX P DQDORJLåNX ODLNRW
 åLÐ PHWÐ VSDOLR P;QHV³ /DWYLM HNVSRUWXRWD
 WINWWDQNåWLQLÐ DXJDOÐ JUÏGÐ åLUQLÐ LU
 SXSD ± SURF GLGHPVQLSD\NLRNLV QHJX

*UÏGÐ SURGXNWÐ SDUåD\;PRLND\XQRRMH (85 W

| 3URGXNWDL | 'DWD | | 3RN\WLV | |
|---------------------|--------|------------------|---------|--------------|
| | VSDOLV | UXJSM\WL\XJV;MLV | VSDOLV | P;QHVLR PHWÐ |
| .YLHWLQLDL PLOWDL | | | | |
| DXNåþLDXVLRV UååLHV | | | | |
| SLUPRV UååLHV | | | | |
| 5XJLQLDL PLOWDL | | | | |
| SDVLMRWL | | " | | |
| åYHLVWLQLDL | | | | |
| 6;OHQRV | | | | |
| NYLHþLÐ | | | | |
| UXJLÐ | " | " | " | |
| .UXRSRV | | | | |
| PDQÐ | " | | " | |
| JULNLÐ | | | | |
| 'ULEVQLDL | | | | |
| DYLåÐ | | | | |
| 5DSVÐ DOLHM XV | | | | |
| ELRN XUR JDP\EDL | | " | " | " |

YLGXWLQ;V VYHUWLQ;V NDLQRV åDOWåEQ19& /åË035,6
 O\JLQDQW P VSDOLR P;Q VX P UXJV;MR P;Q
 O\JLQDQW P VSDOLR P;Q VX P VSDOLR P;Q
 " ± NRQ;GHQFLDO\V GXRPHQ\V



*UÏGÐ LU UDSVÐ YLQWHLQ(âNDLQWRIV (85 W

| 9DOVW\Ë; | DWD | | | | | 3RN\WLV | |
|----------------------------------------------------------------------------------------------------------------------------------------------------------------------------------------------------------------------------------------------|-------|-------|-------|-------|-------|-------------|--|
| | VDY ± | VDY ± | VDY ± | VDY ± | VDY ± | VDYDLW;PHWÐ | |
| ODLVWLQLDL NYLHþLDL | | | | | | | |
| %HOJLMD %XOJDULMD ýHNLMD 9RNLHWLMD (VWLMD *UDLNLMD ,VSDQLMD 3UDQFìJLMD .URDWLMD ,WDOLMD /DWYLMD /LHWXYD 9HQJULMD \$XVWULMD /HQNLMD 5XPXQLMD 6ORY;QLMD 6ORYDNLMD 6XRPLMD âYHGLMD | | | | | | | |
| 3DãDULQLDL NYLHþLDL | | | | | | | |
| %HOJLMD %XOJDULMD 9RNLHWLMD (VWLMD \$LULMD /DWYLMD /LHWXYD 9HQJULMD 2ODQGLMD \$XVWULMD /HQNLMD 3RUWXJDOLMD 5XPXQLMD 6ORYDNLMD | | | | | | | |
| 3DãDULQLDL PLHåLDL | | | | | | | |
| %HOJLMD %XOJDULMD 9RNLHWLMD (VWLMD *UDLNLMD ,VSDQLMD 3UDQFìJLMD .URDWLMD \$LULMD ,WDOLMD /DWYLMD /LHWXYD 9HQJULMD 2ODQGLMD \$XVWULMD /HQNLMD 3RUWXJDOLMD 5XPXQLMD 6ORYDNLMD 6XRPLMD | | | | | | | |
| ODLVWLQLDL UXJLDL | | | | | | | |
| 9RNLHWLMD (VWLMD /DWYLMD \$XVWULMD /HQNLMD | | | | | | | |

OHQWHO;V W VLQ\V



SVO OHQWHO;V W VLQ\V

| 9DOVW\E; | DWD | | | | | 3RN\WLV | |
|----------|-------|-------|-------|-------|-------|-------------|--|
| | VDY ± | VDY ± | VDY ± | VDY ± | VDY ± | VDYDLW;PHWÐ | |

5DSVDL

9RNLHWLMD
 (VWLMD
 /DWYLMD
 /LHWXYD
 /HQNLMD

* O\JLQDQW P VDYDLW VX VDYDLWH ãDOWLQDL ãË,.9& /ãË035,6 (. \$0, =65,5
 O\JLQDQW P VDYDLW VX P VDYDLWH
 3DVWDED /LHWXYRV PDLVWLQLÐ LU SDãDULQLÐ NYLHþLÐ SDãDULQLÐ PLHãLÐ PDLVWLQLÐ

VSDOLR P;Q SURJQR]H SDGSGRQW]; ODSNULPLR P;Q SDGLC
 LNL POQ W 3URJQR]XRMDLPD NDPOQNXUÏ]R LPSRUWR ã
 GHUOLDXV SURJQR]; QDXMDXVLDLFOQWRPHDQURIQGLDOLXV ±
 SDGLG;WL POQ W LU WXGDU\WÐ SUHN\ERPOGRN\þLXV VXGDU\W
 'LGHVQLV NXNXUÏ]Ð GHUOLXV SUXRXL]Ð RHMVPSRW \$UDJHQã \$UJHQWL
 WLQRMH (6 LU NHOLRVH \$IULNRã ãÐDQVÐDGLH;WRV.V.NãDU]ÐH LPS
 SDGLG;MLPDV WXU;WÐ EÍWL GOGXIVQLPDVLUUDRPHSHQVÐRQDQGH
 SURJQR]XRMDP NXNXUÏ]Ð GHUOLXVWLMLRMHã;MLR P SURJQR
)LOLSLQXRVH \$UJHQWLQRMHLPSSRNXR]Ð.LGHMOLDX7XUNLM SD
 ODXNLDPD GLGHVQLR GiO Yi\$UDEKLSDV;WEPDã;MHRQVÐ
 SDV;OLDÐ SORWÐ (6 NXNXUÏ]Ð GHUOLXVXRMDLPD;MNDP ±
 ODXNLDPD /HQNLMRMH 5XPXQRLMRHSHDEDBURMHI]NLMRMHUIGÐ DV
 0LHãLÐ GHUOLDXV SURJQR]; DQDOE]XQMDP XVÐÐDNRWIDUSLX POQ
 VXPDãLQWD 7XUNLMRMH (6 5NXNXUÏ]ÐHLDVWIDU]ÐRSMHRJQR]; SDG
 3DVDXOLQ; NLWÐ JUIGÐ VXQDMGRMOPR SURJQR]X;UI]Ð DWVDU.
 ± P SDO\JLQWL VX SUSBGLQDLWEXLXQLMRMH %UDJLOL
 SURJQR]H SDGLGLQWD POQJROLUMMXU;WÐ VXGDU\WL
 POQ W ± P NLWÐ JUIGÐ HNãSRLEWR /ãË035,6 86'\$

\$WHLWLHV VDQGRULÐ NYLHþLÐ NXNXUÏ]Ð LU UDSVÐ NDLQRV WDUSW

| *UIGLQ;NXO | VDW\PRVDY | VDY ± | VDY ± | VDY ± | VDY ± | 6DYDLW;V | NDLQR |
|------------|-----------|-------|-------|-------|-------|----------|-------|
| ELUãD | P;QXR | | | | | SRN\WLV | |

ODLVWLQLDL NYLHþLÐL

| | | | | | | | |
|--------|---------------------------------------------------|--|--|--|--|--|--|
| 0\$7,) | JUXRGLV NRYDV JHJXã; UXJV;MLV JUXRGLV | | | | | | |
|--------|---------------------------------------------------|--|--|--|--|--|--|

3DãDULQLDL NYLHþLÐL

| | | | | | | | |
|------|--------------------------------------------------------------|--|--|--|--|--|--|
| /,)) | ODSNULWLV VDXVLV NRYDV JHJXã; OLHSD ODSNULWLV | | | | | | |
|------|--------------------------------------------------------------|--|--|--|--|--|--|

.XNXUÏ]DL

| | | | | | | | |
|--------|-------------------------------------------------------|--|--|--|--|--|--|
| 0\$7,) | VDXVLV NRYDV ELUãHOLV UXJSM;WLV ODSNULWLV | | | | | | |
|--------|-------------------------------------------------------|--|--|--|--|--|--|

5DSVDL

| | | | | | | | |
|--------|--------------------------------------------------------|--|--|--|--|--|--|
| 0\$7,) | YDVDULV JHJXã; UXJSM;WLV ODSNULWLV YDVDULV | | | | | | |
|--------|--------------------------------------------------------|--|--|--|--|--|--|

/,)) (ãRQGRQ ,QWHUQDWLRQDO)LGDQRMD%XLVXQHLMDVBCSDH)WLRQDO)UHQFK)XUDLHJLMDG 29
 NDLQRV (85 SDWHLNWRV SDJDO DWLWLQNDPRV GDWRV (&% YDOLXWÐ NXUV O\JLQD
 3DVWDED .DLQRV QXURGRPRV)2% V O\JRPLV ãDOWLQLV 7DUSWDXWL



.RPELQXRWÐMÐ SDãDUÐ LU SUHPLNVÐ JDP\ED /LHWXYRMH ± P W

| 3DãDUDL | 3*3. | NRGDV | 3RN\WLV | | |
|-------------------------------------------------------------------------------------------|------|-------|---------|--|--|
| VSDOLVUXJSMiWUXJV;MDWSDOLVP;QHVLR PHWÐ | | | | | |
| ËNLQLÐ J\YÏQÐ SDãDUÐ SUHPLNVDL | | | | | |
| 0LãLQLDL LãVN\UXV SUHPLNVXV ÌNLQLDPV J\YÏQDPV ± NLDXO;PV ± ãHUWL | | | | | |
| 0LãLQLDL LãVN\UXV SUHPLNVXV ÌNLQLDPV J\YÏQDPV ± JDOYLMDPV ± ãHUWL | | | | | |
| 0LãLQLDL LãVN\UXV SUHPLNVXV QDPLQLDPV SDXNãpLDPV OHVLQWL | | | | | |
| .LWL QLHNXU NLWXU QHSULVNLUWL PLãLQLDL LãVN\UXV SUHPLNVXV ÌNLQLDPV J\YÏQDPV ãHUWL | | | | | |
| ãXQÐ ;GDODV VNLUWDV PDãPHQLQHL SUHN\EDL | | | | | |
| .DpLÐ ;GDODV VNLUWDV PDãPHQLQHL SUHN\EDL | | | | | |
| 0LãLQLDL J\YÏQÐ DXJLQWLQLÐ ;GDOXL LãVN\UXV NDpLÐ DUED ãXQÐ ;GDO VNLUW PDãPHQLQHL SUHN\EDL | | | | | |
| ,ã YLVR | | | | | |

* O\JLQDQW P VSDOLR P;Q VX P UXJV;MR P;Q âDOWLQLV äË,.9& /äË035,
 O\JLQDQW P VSDOLR P;Q VX P VSDOLR P;Q
 3DVWDED 0LãLQLÐ JDOYLMDPV UXJV;MR P;Q JDP\ERV NLHNLV SDWLVNOLQWDV

.RPELQXRWÐMÐ SDãDUÐ LU SUHPLNVÐ JDP\ED LU SDUGDYLPDV

| 3URGXNWDV | 3DDPLQWD | | 3DUGXRWD W | | | |
|-------------------------------------------------------------------------------------------|----------|---------|------------|---------|----------------|---------|
| | 3*3. | SRN\WLV | Lã YLVR | | YLGDXV ULQNRMH | |
| | | | SRN\WLV | SRN\WLV | SRN\WLV | SRN\WLV |
| ËNLQLÐ J\YÏQÐ SDãDUÐ SUHPLNVDL | | | | | | |
| 0LãLQLDL LãVN\UXV SUHPLNVXV ÌNLQLDPV J\YÏQDPV ± NLDXO;PV ± ãHUWL | | | | | | |
| 0LãLQLDL LãVN\UXV SUHPLNVXV ÌNLQLDPV J\YÏQDPV ± JDOYLMDPV ± ãHUWL | | | | | | |
| 0LãLQLDL LãVN\UXV SUHPLNVXV QDPLQLDPV SDXNãpLDPV OHVLQWL | | | | | | |
| .LWL QLHNXU NLWXU QHSULVNLUWL PLãLQLDL LãVN\UXV SUHPLNVXV ÌNLQLDPV J\YÏQDPV ãHUWL | | | | | | |
| ãXQÐ ;GDODV VNLUWDV PDãPHQLQHL SUHN\EDL | | | | | | |
| .DpLÐ ;GDODV VNLUWDV PDãPHQLQHL SUHN\EDL | | | | | | |
| 0LãLQLDL J\YÏQÐ DXJLQWLQLÐ ;GDOXL LãVN\UXV NDpLÐ DUED ãXQÐ ;GDO VNLUW PDãPHQLQHL SUHN\EDL | | | | | | |
| ,ã YLVR | | | | | | |

O\JLQDQW P ,±; P;Q VX P ,±; P;Q âDOWLQLV äË,.9& /äË035,



.LDXOLHQRV MDXWLHQRV LU DY LHQRV

P VDXVLR±VSDOLR P; QDXVLRWXS... SURF; R (85 NJ VXSLUNLPR NDLQRV D\$LHDXS... SURF åHPHVQ; QHL VSDOLR P;Q /LHWXYRV ³PRQ;VSDOLR... W;NVW NLDXOLÐ ± SURF... P WXR SDpLX ODLNRWDUSLX (8.5DXONLÐ... 6(8523 VNHUGHQÐ NODVL;NDY... VXNODVL;NXRWD SURF P... VDXVLR±VSDOLR P;Q \$QDOL... ODLNRWDUSLX YLGXWLQ; NLDX... VNHUGHQÐ PDV LU NRN\E /LHWXY... VXGDU; (85 NJ LU EXYR ±... åHPHVQ; QHL P WXR... (85 NJ P VDX;QR±VSD... /LHWXYRV ³PRQ;VH YLGXWLQ;... VXSLUNLPR NDLQD(85XGDUN;J ±... EXYR SURF åHPHVQ; QHL... VSDOLR P;Q(85 NJ 3LUPRV ±... NJ NDWHJRULMRV NLDXOLÐ... SHU DQDOLJXRMDP ODLNRWDUS³... DQWURV ± NJ ± SURF... NJ ± SURF R SDUãDYH... P VDXVLR±VSDOLR P;Q... UHSUHJHQWDFLQ; (NODV;V... VXSLUNLPR NDLQD /LHWXYRMH... åHPHVQ; Xå YLGXWLQ (6... VNHUGHQÐ W VLQ;V SVO

.LDXOLÐ VXSLUNLPR NDLQRV /LHWXYRV ³PRQ;VH (85 NJ V

| 5DXPHQLQ NODV;JXPR | VDY ± | VDY ± | VDY ± | VDY ± | VDY ± | 3RN\WLV VDYDLW;PHWÐ |
|--------------------|-------|-------|-------|-------|-------|---------------------|
| S | | | | | | |
| E | | | | | | |
| U | | | | | | |
| R | | | | | | |
| O | | | | | | |
| P | | | | | | |
| S-P | | | | | | |

O\JLQDQW P VDYDLW VX P VDYDLWH åDOWLQLV äË,.9& /äË035,
O\JLQDQW P VDYDLW VX P VDYDLWH
" ± NRQ;GHQFLDOiV GXRPHQ\V

åDOXWLQLÐ J\YìQLQLÐ SURGXNWÐ NLHNLDL JDXWL /LHWX

| | VSDOLVUXJSMìWUXJV;MLWSDOLV P;QHVLR PHWÐ | 3RN\WLV P;QHVLR PHWÐ |
|-------------------------------------|-----------------------------------------|----------------------|
| ,ä YLVR | | |
| Lä WR VNDLpLDXV | | |
| JDOYLMÐ | | |
| NLDXOLÐ | | |
| DYLÐ LU RånÐ | | |
| SDXNäpLÐ | | |
| NLWÐ J\YìQÐ | | |
| DWYHMDL NDL QHQXURGRPD J\YìQR UìäLV | | |

* O\JLQDQW P VSDOLR P;Q VX P UXJV;MR P;Q O\JLQDQW... SDWLNVLQWL GXRPHQ\V QHJDOXWLQLDL GXRPHQ\V



.LDXOLÐ (NODV;V VXSLUNLPR NDLQRV (XURSRV 6 MXQJRV YDOVW

| 9DOVW\E; /LHWXYD /HQNLM D /DWYLM D (VWLMD 6ORYDNLM D 6ORY;QLMD ýHNLMD 9HQJULMD 0DOWD .LSUDV %HOJLMD 'DQLMD 9RNLHWLMD *UDLNLMD ,VSDQLMD 3UDQF;JLMD \$LULMD ,WDOLMD /LXNVHPEXUJDV 1\GHUODQGDL \$XVWULMD 3RUWXJDOLMD 6XRPLMD âYHGLMD %XOJDULMD 5XPXQLMD .URDWLMD (6 YLGXWLQ; | 'DWD | | | | | 3RN\WLV | |
|---------------------------------------------------------------------------------------------------------------------------------------------------------------------------------------------------------------------------------------------------------------------------|-------|-------|-------|-------|-------|-------------|--|
| | VDY ± | VDY ± | VDY ± | VDY ± | VDY ± | VDYDLW;PHWÐ | |
| /LHWXYD | | | | | | | |
| /HQNLM D | | | | | | | |
| /DWYLM D | | | | | | | |
| (VWLMD | | | | | | | |
| 6ORYDNLM D | | | | | | | |
| 6ORY;QLMD | | | | | | | |
| ýHNLMD | | | | | | | |
| 9HQJULMD | | | | | | | |
| 0DOWD | | | | | | | |
| .LSUDV | | | | | | | |
| %HOJLMD | | | | | | | |
| 'DQLMD | | | | | | | |
| 9RNLHWLMD | | | | | | | |
| *UDLNLMD | | | | | | | |
| ,VSDQLMD | | | | | | | |
| 3UDQF;JLMD | | | | | | | |
| \$LULMD | | | | | | | |
| ,WDOLMD | | | | | | | |
| /LXNVHPEXUJDV | | | | | | | |
| 1\GHUODQGDL | | | | | | | |
| \$XVWULMD | | | | | | | |
| 3RUWXJDOLMD | | | | | | | |
| 6XRPLMD | | | | | | | |
| âYHGLMD | | | | | | | |
| %XOJDULMD | | | | | | | |
| 5XPXQLMD | | | | | | | |
| .URDWLMD | | | | | | | |
| (6 YLGXWLQ; | | | | | | | |

* O\JLQDQW P VDYDLW VX P VDYDLWH âDOWLQLV (.
 O\JLQDQW P VDYDLW VX P VDYDLWH
 ± QiUD GXRPHQÐ

\$YLD VXSLUNLPR NDLQRV /LHWXYRV ³PRQ;VH (85 NJ E

| .DWHJRULMD | *\YRMR VYRULR | | | | 6NHUGHQÐ VYRULR | | | |
|-------------------------------|-----------------------|-----------------------|-----------------------|-----------------------|-----------------------|-----------------------|-----------------------|-----------------------|
| | SRN\WLV | | | | SRN\WLV | | | |
| | VSDOLXJV;MSDPL;QHVRWÐ | VSDOLXJV;MSDPL;QHVRWÐ | VSDOLXJV;MSDPL;QHVRWÐ | VSDOLXJV;MSDPL;QHVRWÐ | VSDOLXJV;MSDPL;QHVRWÐ | VSDOLXJV;MSDPL;QHVRWÐ | VSDOLXJV;MSDPL;QHVRWÐ | VSDOLXJV;MSDPL;QHVRWÐ |
| ULXNDL QH Y\UHVQL NDLS P;Q | | | | | | | | |
| .LWRV DY\ V Y\UHVQiV NDLS P;Q | | | | | | | | |
| 9LGXWLQi NDLQD | | | | | | | | |

O\JLQDQW P VSDOLR PiQ VX P UXJV;MR PiQ âDOWLEQL& /ãË035,6
 O\JLQDQW P VSDOLR PiQ VX P VSDOLR PiQ
 " ±NRQ;GHQFLDOiV GXRPHQ\ V
 3DVWDED 9LGXWLQiV NDLQRV VNDLpLXRMDPRV VYHUWLQLX EìGX

\$YLD LU RãND VNHUGLPDL /LHWXYRV ³PRQ;VH YQW

| .DWHJRULMD | 3RN\WLV | | | |
|-------------------------------|------------------------------------------|--|--|--|
| | VSDOLVUXJSM;WUXJV;MLVVSDOLVP;QHVL R PHWÐ | | | |
| ULXNDL QH Y\UHVQL NDLS P;Q | | | | |
| .LWRV DY\ V Y\UHVQiV NDLS P;Q | | | | |
| ,ã YLVR | | | | |
| 2ãNRV LU RãLDL | | | | |

* O\JLQDQW P VSDOLR PiQ VX P UXJV;MR PiQ âDOWLEQL& /ãË035,6
 O\JLQDQW P VSDOLR PiQ VX P VSDOLR PiQ



/LHWXYRV ³PRQ;VH SDJDPLQWRV P;VRV LU NDL NXULÐ P;VRV JDPLQWRV

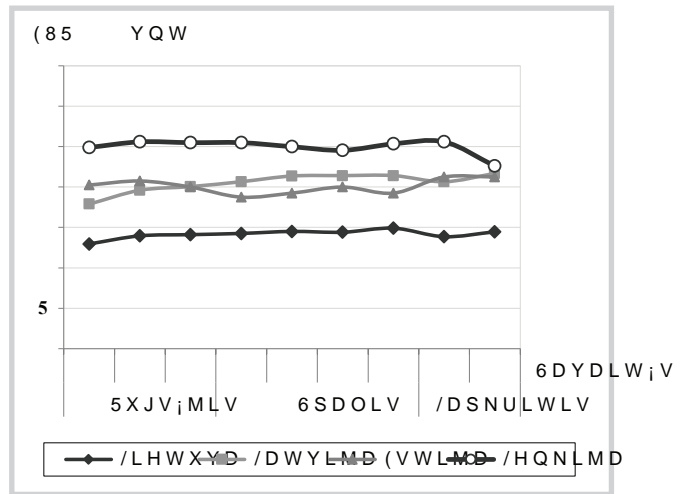
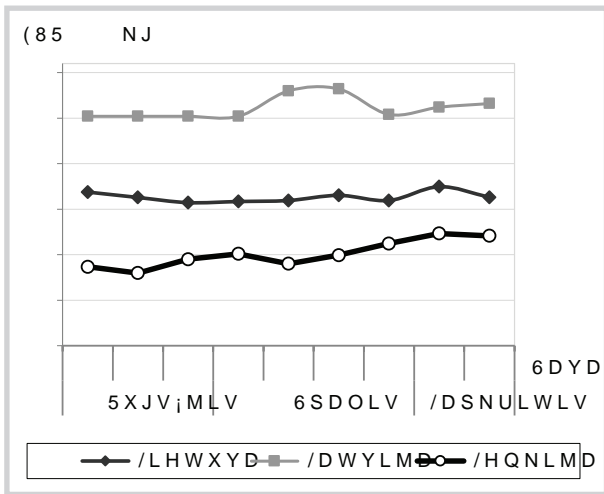
| *DPLQLR SDYD | G*QLNRVGD | LHWXYRV | | ULQNRMH | | LWÐ (6 äDOLÐ | | ULQNRVH | | | |
|------------------------------------------------------------------------------------------------------------------------------------------------------------------------------------------------------------------------------------------------------------|-----------|---------|--------|---------|---------|--------------|--------|---------|--------|---------|------|
| | | VSDOLV | UXJVIM | VSDOLV | PIQHVUR | PHWÐ | VSDOLV | UXJVIM | VSDOLV | PIQHVUR | PHWÐ |
| âYLHåLRV DUED DWäDOG\WRV MDXWLHQRV LU YHUåLHQRV VNHUGHQRV LU VNHUGHQÐ SXV;V LU NHWYLUþLDL VX NDXODLV | | | | | | | | | | | |
| âYLHåL DUED DWäDOG\WL MDXWLHQRV LU YHUåLHQRV JDEDODL | | | | | | | | | | | |
| 8ääDOG\WRV MDXWLHQRV LU YHUåLHQRV VNHUGHQRV VNHUGHQÐ SXV;V NHWYLUþLDL LU JDEDODL | | | | | | | " | " | | | |
| âYLHåLD DUED DWäDOG\WD NLDXOLHQD VNHUGHQRV VNHUGHQÐ SXV;V | | | | | | | | | | | |
| âYLHåLD DUED DWäDOG\WD NLDXOLHQD NXPSTDL PHQW;V LU MÐ GDO\V VX NDXODLV | | | | | | | | | | | |
| âYLHåLD DUED DWäDOG\WD NLDXOLHQD\UXV VNHUGHQDV LU VNHUGHQÐ SXVHV NXPSTLXV PHQWHV LU MÐ GDOLV VX NDXODLV | | | | | | | | | | | |
| 8ääDOG\WD NLDXOLHQD NXPSTDL PHQW;V LU MÐ GDO\V VX NDXODLV | | | | | | | | | | | " |
| 8ääDOG\WD NLDXOLHQD LåVNIUXV VNHUGHQDV LU VNHUGHQÐ SXVHV NXPSTLXV PHQWHV LU MÐ GDOLV VX NDXODLV | | | | | | | | | | | |
| âYLHåLRV DUED DWäDOG\WRV ;ULXNÐ DUED DYLD VNHUGHQRV VNHUGHQÐ SXV;V LU JDEDODL | | | | | | | | | | | |
| âYLHåL DUED DWäDOG\WL JDOYLMLHQRV NLDXOLHQRV DYLHQRV RåNLHQRV DUNOLHQRV LU NLWÐ DUNOLQLÐ åHLPRV DWVWRYÐ YDOJRPLHML P;VRV VXESURGXNWDL .LDXOLHQRV NXPSTDL PHQW;V LU MÐ GDO\V VX NDXODLV VIG\WL XåSLOWL V;U\PX GåLRYLQWL DUED UINIWL | | | | | | | | | | | |
| 6iG\WD XåSLOWD V;U\PX GåLRYLQWD DUED UINIWD NLDXOLHQD | | | | | | | | | | | |
| 6iG\WD XåSLOWD V;U\PX GåLRYLQWD DUED UINIWD JDOYLMLHQD | | | | | | | | | | | |
| 'HåURV LU SDQDåiv SURGXNWDL Lå NHSHQÐ LU GDXJLDXVLD Lå NHSHQÐ SDJDPLQWL PDLVWR SURGXNWDL | | | | | | | | | | | |
| 'HåURV LU SDQDåiv SURGXNWDL Lå P;VRV P;VRV VXESURGXNWD DUED NUDXMR LU GDXJLDXVLD Lå åLD SURGXNWD SDJDPLQWL PDLVWR SURGXNWDL | | | | | | | | | | | |
| .LWD SDUXRåWD DUED NRQVHUYXRWD NLDXOLHQD MRV VXESURGXNWDL LU PLåLQLDL ³VNDLWDQW PLåLQLXV | | | | | | | | | | | |
| 3DUXRåWD DUED NRQVHUYXRWD JDOYLMLHQD DUED MRV VXE SURGXNWDL | | | | | | | " | " | " | | |

* JDPLQWRMÐ NDLQRV DSVNDLþLXRWRV VYHUWLQLX EIGX EH 390 O\JLQDQW P VSI
 VX P VSDOLR PiQ " ± NRQ;GHQFLDOIv GXRPHQV
 ³VNDLWDQW åYLHåL P;V XåSLOW GUXNNDWQWQW EBNRQDQRRLQLRQRQWHUMÐQNHWYLUþLDL
 QXRNDUWDV QXJDULQHV LU MÐ GDOLV LåVNIUXV NXPSTLXV RHLQWHSDIUXRåVGDQIDOXV
 LåVNIUXV Lå NHSHQÐ SDJDPLQWDV GHåLåDM\UXVGRåWåV YDQSLQDåLXSVRåBNDQXV KR
 SDJDPLQWXV PDLVWR SURGXNWXV SDUXRåWXV YDOJLXV LU SDWLHNDQXV
 åDO WåEQ Lå /åE035,6



UXJV MR SDGLG MR SURF UXNL MR P Q VXP D MR SURF
R SDO J L Q W L V X P S D O L R P S Q R F ± ' L G P H Q L Q L D J D P L Q W R M E
.D O D N X W D V N H U G H Q D J D P I E D O D P O G L J X R M D D P W L O S D X N R ä W L H Q R V
W D U S L X S D G L G MR SURF S D P L D D W E X Y R D X M D X V L D L V 6 W D W
G L G H V Q i Q H L S U L H ä P H W X V G X R P H Q L P L V U X J V i M R P i Q Y L ä
ä È , . 9 & / ä È 0 3 5 , 6 G X R P H Q L P L V H W X Y R M H E X Y R SURF G L G H
V S D O L R P i Q / L H W X Y R V U L Q N R M H SURF i V G Q C H V Q L V P O X N S U L H ä P
E U R L O H U L D V N H U G H Q D E X Y R S D U G X P W D X V L R ± U X J S M i P L R P i Q
R N U i W L Q i O L D ± O i ± SURF (6 P D i B X ä Q L H Q R V V H M R S U R V W L U
P i Q W D P L D X D W L W L Q N D P D L ± R P L V N D W R W H O L D X SURF . P G X R P H
G D X J L D X Q H L S U L H ä P H W X V 9 L ä P L X N D E U R L O H U L D V N H U G H Q D S D X N
Y L G X W L Q i G L G P H Q L Q i N D L Q D V S D O L R i P i Q S P I Q W W Q W L L V X E X Y R

9LäpLXND EURLOHULD VNHUGHQD YLGXWLQ;V LU 0 NDWHJRULMØ VYHUWLQ;V N
SDUGDYLP R NDLQRV EH 390 /LHSDXGDMYHPRDNMDLQVRMHEIHU390 /LHWXYR
/HQNLMRMH P UXJV;MR±ODSNLULP LQNR;MRMH P UXJV;MR±OD



âDOWÄEQ19& /äÈ035/6\$(, LU (. YLGXWLQ;V / LU 0 NDWHJRULMØ VYHUWLQ;V N

NDLQRV (85 SDWHLNWRV (\$2JYDODWVWVONNDU

âDOWÄEQ19& /äÈ035,(/9\$(, LU =65,5

âYLHåLD VXSDNXRWØ NLDXäLQLD SDUGDYLP R YLGXWLQ;V GLGPHQLQ;V

| .RN\eiV NODViV | SDJDOYVYRUVDY | | | | 3RN\WLV | |
|----------------|---------------|---|---|---|----------|-----|
| | ± | ± | ± | ± | VDYDLW;V | HWD |
| \$ NODVi | | | | | | |
| / QXR J LNL J | | | | | | |
| 0 QXR J LNL J | | | | | | |
| 9LGXWLQ; /±0 | | | | | | |

O\JLQDQW P VDYDLW VX VDYDLWH âDOWÄEQ19& /äÈ035,6

O\JLQDQW P VDYDLW VX P VDYDLWH

3DVWDED YLGXWLQ;V NDLQRV VNDLpLXRMDPRV VYHUWLQLX EIGX

âYLHåLD VXSDNXRWØ NLDXäLQLD SDUGDYLP R YLGXWLQ;V GLGPHQLQ;V

| .RN\eiV NODViV | SDJDOYVYRUVDY | | | | 3RN\WLV | |
|----------------|---------------|---|---|---|----------|-----|
| | ± | ± | ± | ± | VDYDLW;V | HWD |
| \$ NODVi | | | | | | |
| / QXR J LNL J | | | | | | |
| 0 QXR J LNL J | | | | | | |
| 9LGXWLQ; /±0 | | | | | | |

NDLQRV (85 SDWHLNWRV SDJDO DWLWLQNDPRV GDWRV (&% YDOLXWRADOXMLQLV =65,5

O\JLQDQW P VDYDLW VX VDYDLWH

O\JLQDQW P VDYDLW VX P VDYDLWH



9LGXWLQ;V GLGPHQLQ;V YLâpLXNÐ EURLOHULÐ VNHUGHQÐ \$ NODV;V
(85 NJ EH 390

| 9DOVW\i | DWD | | | | | 3RN\WLV | |
|-------------------|-------|-------|-------|-------|-------|-------------|--|
| | VDY ± | VDY ± | VDY ± | VDY ± | VDY ± | VDYDLW;PHWÐ | |
| /LHWXYD | | | | | | | |
| /DWYLMD | | | | | | | |
| %HOJLMD | | | | | | | |
| %XOJDULMD | | | | | | | |
| ýHNLMD | | | | | | | |
| 'DQLMD | | | | | | | |
| 9RNLHWLMD | | | | | | | |
| *UDLNLMD | | | | | | | |
| ,VSDQLMD | | | | | | | |
| 3UDQFijLMD | | | | | | | |
| .URDWLMD | | | | | | | |
| \$LULMD | | | | | | | |
| ,WDOLMD | | | | | | | |
| .LSUDV | | | | | | | |
| 9HQJULMD | | | | | | | |
| 0DOWD | | | | | | | |
| 2ODQGLMD | | | | | | | |
| \$XVWULMD | | | | | | | |
| /HQNLMD | | | | | | | |
| 3RUWXJDOLMD | | | | | | | |
| 5XPXQLMD | | | | | | | |
| 6ORY;QLMD | | | | | | | |
| 6ORYDNLMD | | | | | | | |
| 6XRPLMD | | | | | | | |
| âYHGLMD | | | | | | | |
| (6 YLGXWLQ; NDLQD | | | | | | | |

9LGXWLQ;V GLGPHQLQ;V âYLHåLÐ VXSDNXRWÐ NLDXåLQLÐ /±0 NDW NDLQRV

| 9DOVW\i | DWD | | | | | 3RN\WLV | |
|-------------------|-------|-------|-------|-------|-------|-------------|--|
| | VDY ± | VDY ± | VDY ± | VDY ± | VDY ± | VDYDLW;PHWÐ | |
| /LHWXYD | | | | | | | |
| /DWYLMD | | | | | | | |
| (VWLMD | | | | | | | |
| %HOJLMD | | | | | | | |
| %XOJDULMD | | | | | | | |
| ýHNLMD | | | | | | | |
| 'DQLMD | | | | | | | |
| 9RNLHWLMD | | | | | | | |
| *UDLNLMD | | | | | | | |
| ,VSDQLMD | | | | | | | |
| 3UDQFijLMD | | | | | | | |
| .URDWLMD | | | | | | | |
| \$LULMD | | | | | | | |
| ,WDOLMD | | | | | | | |
| .LSUDV | | | | | | | |
| 9HQJULMD | | | | | | | |
| 0DOWD | | | | | | | |
| 2ODQGLMD | | | | | | | |
| \$XVWULMD | | | | | | | |
| /HQNLMD | | | | | | | |
| 3RUWXJDOLMD | | | | | | | |
| 5XPXQLMD | | | | | | | |
| 6ORY;QLMD | | | | | | | |
| 6ORYDNLMD | | | | | | | |
| 6XRPLMD | | | | | | | |
| âYHGLMD | | | | | | | |
| (6 YLGXWLQ; NDLQD | | | | | | | |

O\JLQDQW P VDYDLW VX VDYDLWH åDOWLQLV (.
O\JLQDQW P VDYDLW VX P VDYDLWH
QHSDWHLNWL GXRPHQIV



QHL P WXR SDpLX ODLNRW DU SRXU W DV SDXNâWLHQRV WINVW
 ULQND GDU QHDWVLJDYR SR & RMLHNL SDQGHPLMRV WDPDX
 SUHN\ED SUDG;MR VWDELOLJXRVSQDO\NXSRDWR OSLRPRWDUSLX
 PDâ;MR GiO SDEUDQJXVLØ V QDNVSRSDVGV;NXVDV @DOYDLGLG;M
 JDEHQDPØ NURYLQLØ NDLQØ VXLVGSURKVLK 6ØØGRX\$UWRELM ±
 WUINXPR \$QDOLJXRMDPX ODLNRW DU SRXU W DV SDXNâWLHQRV WINVW
 VX P WXR SDpLX ODLNRW DU \$LXGXRRMRØBWXRMØR PHWØ VD
 SURGXNFLMRV YHUW; EXYR PiQ S\$URØ\JLQDVAHWØ; P WXR S
 POQ (85 (6 SDXNâWLHQRV LPSRWVNDXWVXGI
 P VDXVLR±UXJSMiþLR PiQ (6 SDXNâWLHQRV LPSRWVNDXWVXGI
 SDXNâWLHQRV HNVSURUWDYR ³ *DQWLNØVUDLQX JL D VWLWDLQSDXNâWLHQRV
 SURF LNL W LUWINVW SURPSRUWLDYR Lã %UDJLOLMRV
 WINVW W .RQJR 'HPRNUDWLQ;WVHW\$XEDLQØV WINVW
 EXYR WUHþLRMH YLHWRMH NLDWØOãDENØSRUWXRMDPRW W 3
 SDXNâWLHQRV NLHN³ WINVW W 1RWYH(JLSDXNâWLHQRV SDXNâWLHQRV NLHN³
 HNVSURUWDV ³)LOL\$VIXWVXGDØ%\$URØ\$URF R Lã YLVØ NLWØ ã
 WINVW W ³ 6DXVNR\$WDEMLDXVLDL SDXNâWLHQRV LPSRWVNDXWVXGI
 .LHN PDâHVQLXV NLHNLXV LãYLØQW± ³ 3SHWØ \$UU&NUDLQRV ±
 WINVW W LU *DERQ WINVW ãDWLQLDW DãDØLØØ35,6 (.

.DL NXULØ SDXNâWLHQRV JDPLQLØ JDP\ED /LHWXYRV ³PI

| *DPLQLR SDYDGLQLØP BV NR GDV | 3DJDPQLQWD | | 3RN\WLV | |
|----------------------------------------------|------------|--------------|---------|--------|
| | VSDOLW | XJV MLVSDOLV | PiQHV | LRPHWØ |
| âYLHãL DUED DWãDOG\WL QHVXNDSRWL YLãpLXNDL | | | | |
| âYLHãL DUED DWãDOG\WL QHVXNDSRWL NDODNXWDL | | | | |
| âYLHãL DUED DWãDOG\WL YLãpLXNØ JDEDODL | | | | |
| âYLHãL DUED DWãDOG\WL NDODNXWØ JDEDODL | | | | |
| 8ããDOG\WL QHVXNDSRWL YLãpLXNDL | | | | |
| 8ããDOG\WL YLãpLXNØ JDEDODL | | | | |
| 8ããDOG\WL NDODNXWØ JDEDODL | | | | |
| 9DOJRPLHML SDXNâWLHQRV VXESURGXNWDL | | | | |
| .LWL JDPLQLDL DUED NRQVHUYDL Lã NDODNXWLHQRV | | | | |
| .LWL JDPLQLDL DUED NRQVHUYDL Lã SDXNâWLHQRV | | | | |

O\JLQDQW P VSDOLR PiQ VX UXJV;MR PiQ ãDOVãEQ L9& /ãË035,6
 O\JLQDQW P VSDOLR PiQ VX P VSDOLR PiQ
 SDWLN VOLQWL GXRPHQ\V
 ³VNDLWDQW EURLOHULXV GHGHNOHV LU NW YLãWDV

/LHWXYRV ³PRQ;VH SDJDPLQWØ SDXNâWLHQRV JDPLQLØ S

| *DPLQLR SDYDGLQLØP BV NR GDV | 3DUGXRWD | | | |
|----------------------------------------------|-----------------------------------|---------------|---------------|--|
| | /LHWXYRV ULQNRMHNLWRVH (6 ãDO\ VH | | | |
| | SRN\WLV | | SRN\WLV | |
| UXJV;MLVSDOLV | UXJV;MLVSDOLV | UXJV;MLVSDOLV | UXJV;MLVSDOLV | |
| âYLHãL DUED DWãDOG\WL QHVXNDSRWL YLãpLXNDL | | | | |
| âYLHãL DUED DWãDOG\WL YLãpLXNØ JDEDODL | | | | |
| âYLHãL DUED DWãDOG\WL NDODNXWØ JDEDODL | | " | " | |
| 8ããDOG\WL QHVXNDSRWL YLãpLXNDL | | | | |
| 8ããDOG\WL YLãpLXNØ JDEDODL | | | | |
| 8ããDOG\WL NDODNXWØ JDEDODL | | " | " | |
| 9DOJRPLHML SDXNâWLHQRV VXESURGXNWDL | | | | |
| .LWL JDPLQLDL DUED NRQVHUYDL Lã NDODNXWLHQRV | | | | |
| .LWL JDPLQLDL DUED NRQVHUYDL Lã SDXNâWLHQRV | | | | |

O\JLQDQW P VSDOLR PiQ VX UXJV;MR PiQ ãDOVãEQ L9& /ãË035,6
 " ± NRQ;GHQFLDOiV GXRPHQ\V



3LHQR LU SLHQR JDPLQLÐ ULQND

P VDXVLR±VSDOLR PĭQLĀLHWXYRV SLHQR VVWDQDOLJXRMD
 VXSLUNLPR LU SHUGLUELPR ³PRQLĀNDOLR QSVNDLQD VV
 ULHEXPR SLHQR WROLDX ± āDOLR SLHQR VVWDQDOLJXRMD
 āLHN WLHN GDXJLDX QHL SULLĀDWHVWRVWSLHQR VVWDQDOLJXRMD
 ODLNRWDUSLX R HNVSRUWDVSDOLR PĭQLĀLHWXYRV SLHQR VVWDQDOLJXRMD
 āĒ,.9& /āĒ035,6 GXRPHQLPLR PĭQLĀLHWXYRV SLHQR VVWDQDOLJXRMD
 VDXVLR±VSDOLR PĭQLĀLHWXYRV SLHQR VVWDQDOLJXRMD
 NLWÐ (6 āDOLR SLHQR VXSLUNLPR VVWDQDOLJXRMD
 VXSLUNLPR VVWDQDOLR SLHQR VVWDQDOLJXRMD
 GDXJLDX PĭQLĀLHWXYRV SLHQR VVWDQDOLJXRMD
 DSLBURF PLQĭWR SLHQR EXYR āDOLR SLHQR VVWDQDOLJXRMD

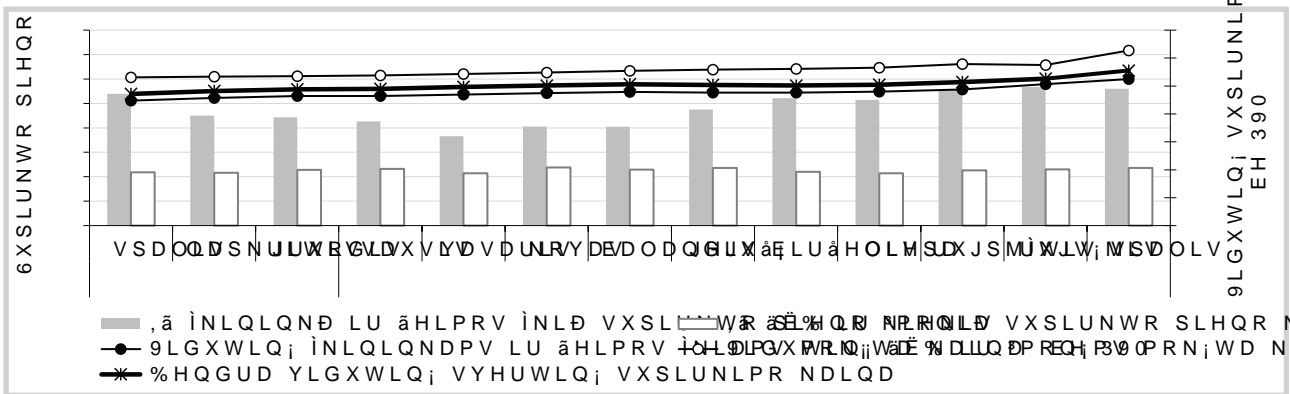
āDOLR SLHQR VXSLUNLPR NLHNLDL (6 YDOVWĒĭVH W

| 9DOVWĒĭ | UXJVĭMLV OLHSD | | UXJSMĭWLWXJVĭMLVPĭQHVLR PHWÐ | |
|---------------|----------------|--|------------------------------|--|
| | %HOJLMD | | | |
| %XOJDULMD | | | | |
| ŷHNLMD | | | | |
| 'DQLMD | | | | |
| 9RNLHWLMD | | | | |
| (VWLMD | | | | |
| \$LULMD | | | | |
| *UDLNLMD | | | | |
| ,VSDQLMD | | | | |
| 3UDQFĭJLMD | | | | |
| .URDWLMD | | | | |
| ,WDOLMD | | | | |
| .LSUDV | | | | |
| /DWYLMD | | | | |
| /LHWXYD | | | | |
| /LXNVHPEXUJDV | | | | |
| 9HQJULMD | | | | |
| 0DOWD | | | | |
| 1\GHUODQGDL | | | | |
| \$XVWULMD | | | | |
| /HQNLM | | | | |
| 3RUWXJDOLMD | | | | |
| 5XPXQLMD | | | | |
| 6ORYĭQLMD | | | | |
| 6ORYDNLMD | | | | |
| 6XRPLMD | | | | |
| āYHGLMD | | | | |

(85 W

3DVWDED ² /LHWXYRV āDOLR SLHQR VXSLUNLPR NLHN³ ³WUDXNWD āDOLHV SLHQR SHUGL
 NLHNLDL EHL NLHNLDL VXSLUNWL WLHVLRJLDL Lā /LHWXYRV LU NLWÐ (6 YDOVWĒĒLÐ SLH
 OĭJLQDQW P UXJVĭMR PĭQLĀLHWXYRV VX UXJSĭPRQPĭQX ORJLQDQWMR PĭQLĀLHWXYRV
 āDOWLQLDL āĒ,.9& /āĒ035,6 LU

āDOLR SLHQR VXSLUNLPDV /LHWXYRMH Lā āDOLHV SLHQR



%DĭLQLÐ URGLNOLD ULHEXPDV ± EDOW\PLQJXPDV ±
² YLGXWLQĭ VVHUWLQĭ VVWDQDOLJXRMD NDLQRV LU EHQGUR VXSLUNLPR NLHNLR DSVNDLpLD
 VNLUWR SHUGLUEWL ³PRQLĀ YLGXMH YHUWĭ EHL NLHNLV āDOWLQLV āĒ,.9& /āĒ035,



NDLQD Lã /HQNLMRV SLHQR VXSLUN;MR LW S DOLR SURFQ R YL
 3PRQLD VXPDA;MR DWLWLQNDPDL P V D RER ± VSDOLR SURFQ R YL
 P VDXVLR ± VSDOLR P; S DUGXRWD ± PRVN S DOLR SURFQ R YL
 VXSLUN;MDL 3 NLWDV (6 YDOW W E H 3 9 6 D U G D P L;DX ã L W Ì N P H W D VDX
 åDOLR SLHQR ± SURF PDã L D X W X Y R V S P H W X R V S L U X;MDL 3 /
 ODLNRWDUSLX 'LGã L S U R F G D O L Y B U B S L R Dã L D X åDOLR SLHQR R
 SDUGXRWD 3 /HQNLM NLWD G S D O L Y D Y Æ P / P W D L Q D L S D O R L G; M W L D M S L F
 \$QDOLJXRMDPX ODLNRWDUSLX 3 /HQNLM EX Yã R O W E L W Xã R W D,6

3DVDXOLQ;V NDL NXULD SLHQR JDPLQLD NDLQRV (85

| | |
|---------------------|----------------|
| *DPLQLR SDYDGLQLPDV | 9LGXWLQ; NDLQD |
| | -\$9 |

| | VDY | | | | | SRN\WLV |
|------------------------------------------|-----|---|---|---|---|-------------|
| | ± | ± | ± | ± | ± | VDYDLW;HW D |
| 6YLVHW DV \$\$ | | | | | | |
| 6iULV &KHGGDU OXLWDLV | | | | | | |
| /30 &HQWULQLV LU 5\W D UHJLRQDV)2% | | | | | | |
| 130 1DFLRQDOLQLV YLG)2% | | | | | | |
| ,ãUiJ D PLOWHOLDL &HQWULQLV UHJLRQDV)2% | | | | | | |

9DNDUD (XURSRMH HNVSRUWXL)2%

| | VDY | | | SRN\WLV |
|-------------------|-----|---|---|-------------|
| | ± | ± | ± | VDYDLW;HW D |
| 6YLVHW DV ULHE | | | | |
| /30 | | | | |
| 130 | | | | |
| /\G\WDV VYLVHW DV | | | | |
| ,ãUiJ D PLOWHOLDL | | | | |

2NHDQLMRV YDOVW\E;VH HNVSRUWXL)2%

| | VDY | | | SRN\WLV |
|----------------|-----|---|---|-------------|
| | ± | ± | ± | VDYDLW;HW D |
| 6YLVHW DV ULHE | | | | |
| /30 | | | | |
| 130 | | | | |
| 6iULV &KHGGDU | | | | |

/30 ± QXJULHEWR SLHQR PLOWHOLDL 130 ± QHQXJULHEWR SLHQR PLOWHOLDL 86'\$
 *NDLQRV XãVLHQLR YDOVW\E;VH (85 SDWHLNWRV VSDJDO DWLWLQNDPRV GDWRV (&% YDQ
 O\JLQDQW GYL SDVN D W L Q D Q W D V V P Y L L W H V P DWLWLQNDP D ODLNRWDUSL D GXRPHQLV
 O\JLQDQW P ± VDYDLWHV VX ± VDYDLW;PLV

.DL NXULD SLHQR JDPLQLR MBLQRW LMRMH LU /HQNLMRMH (85 PD

| | | |
|------------------|-------------------------------------|---------|
| 9DOVW\E; JDPLQIV | ODW | 3RN\WLV |
| | YQWVSD OLVJSMU XJLW;MSD PL;QHVPRW D | |

| | | | |
|---------------------------------|----------------------------------|--|--|
| /DWYLM D | | | |
| 7LOWiWLDL | NJ | | |
| (VWLM D | | | |
| *HULDPDVLV SLHQDV ULHE | Lã IDVXRWDV 3 SO;YHO;V IDVXRWHV | | |
| *HULDPDVLV SLHQDV ULHE | Lã IDVXRWDV 3 WHWUDSDNR IDVXRWHV | | |
| 6YLVHW DV ± NJ OXLWDLV | NJ | | |
| 6YLVHW DV ± ULHE Lã IDVXRWDV SR | ± J IDVXRWHV | | |
| (GDP ViULDL | NJ | | |
| *RXGD ViULDL | NJ | | |
| 9DUãN;V ViULDL ULHE | NJ | | |
| /HQNLMD | | | |
| 6YLVHW DV ULHE OXLWDLV | NJ | | |
| 6YLVHW DV ULHE IDVXRWDV | NJ | | |
| 1HQXJULHEWR SLHQR PLOWHOLDL | NJ | | |
| 1XJULHEWR SLHQR PLOWHOLDL | NJ | | |
| ,ãUiJ D PLOWHOLDL | NJ | | |
| (GDP ViULDL | NJ | | |
| (PPHQWDOHU ViULDL | NJ | | |
| ORj]DUWiQD DL | NJ | | |

JDPLQRW D YLGXWLQ;V VYHUWLQ;V NDLQRV EH 390 åDOWLQLDL /9\$(, (., LU S
 O\JLQDQW P VSDOLR P;Q L Q D Q W J V;M R P S D O L R P;Q V X P VSDOLR P;Q
 NDLQRV XãVLHQLR YDOVW\E;VH (85 SDWHLNWRV VSDJDO DWLWLQNDPRV GDWRV (&% YDQ



äDOLR SLHQR VXSLUNLPR NDLQRV (6 YDOVW\EiVH (85

| 9DOVW\Ei | UXJV;MLV OLHSD | UXJSMiWLWXJV;MLV | 3RN\WLV |
|---------------|----------------|------------------|---------|
| %HOJLMD | | | |
| %XOJDULMD | | | |
| ýHNLMD | | | |
| 'DQLMD | | | |
| 9RNLHWLMD | | | |
| (VWLMD | | | |
| \$LULMD | | | |
| *UDLNLMD | | | |
| ,VSDQLMD | | | |
| 3UDQFijLMD | | | |
| .URDWLMD | | | |
| ,WDOLMD | | | |
| .LSUDV | | | |
| /DWYLMD | | | |
| /LHWXYD | | | |
| /LXNVHPEXUJDV | " | " | " |
| 9HQJULMD | | | |
| 0DOWD | | | |
| 1\GHUODQGDL | | | |
| \$XVWULMD | | | |
| /HQNLMD | | | |
| 3RUWXJDOLMD | | | |
| 5XPXQLMD | | | |
| 6ORYiQLMD | | | |
| 6ORYDNLMD | | | |
| 6XRPLMD | | | |
| âYHGLMD | | | |
| 9LGXWLQi (6 | | | |

3DVWDERV QDWiUDODXV ULHEXPRLSHQDV VXSLUNWDV /LHWXYRMH P PiQ
 EDOW\PLQJXPR PiQ ULHEXPRL EDOW\PLQJXPR PiQ ULHEXPRL
 VNHOELDPRV SDJDO P EDODQGáLR G (XURSRV .RPLVLMRV ³J\YHQGLQLPR UHJODPH
 OIJLQDQW P UXJV;MR PiQJLVQDWJSMiPLRU;MR PiQ VX P UXJV;MR PiQ " ±
 äDOWLQLDL äĒ,.9& /äĒ035,6

äDOLR SLHQR HNVSRUWQV Lã /LHWXYRV ³ NLWDV (6 ä

| /LHWXYRV SLHQR VXSLUNLPR NDLQRV (6 äDOLV | VSDOLV | 3RN\WLV |
|----------------------------------------------------|--------|---------|
| äDOLR SLHQR HNVSRUWQV Lã /LHWXYRV ³ NLWDV (6 äDOLV | | |

1DWiUDODXV ULHEXPRLSHQDV

| | | |
|-------------------------------------------------|--|--|
| 9LGXWLQi HNVSRUWQV Lã /LHWXYRV ³ NLWDV (6 äDOLV | | |
| 9LGXWLQLV ULHEXPDV | | |
| 9LGXWLQLV EDOW\PLQJXPDV | | |
| %HGGUDV HNVSRUWXRWDV MLHNLV ³ NLWDV (6 äDOLV | | |
| ,ã WR VNDLpLDXV | | |
| NLHNLV W | | |
| ³ /HQNLMD YLGXWLQi NDLQD(85 W | | |
| YLGXWLQLV ULHEXPDV | | |
| YLGXWLQLV EDOW\PLQJXPDV | | |

%DJLQLD URGLNOLD SLHQDV

| | | |
|-------------------------------------------------|--|--|
| %HGGUDV HNVSRUWXRWDV MLHNLV ³ NLWDV (6 äDOLV | | |
| 9LGXWLQi HNVSRUWQV Lã /LHWXYRV ³ NLWDV (6 äDOLV | | |

OIJLQDQW P VSDOLR PQLQDQWJVMR P;SDOLR PiQ VX P VSDOLR PiQ
 VYHUWLQi Lã /LHWXYRV ³ NLWDV (6 äDOLV
 EDJLQLD URGLNOLD SLHQDV ULHEXPDV ±XRWDV ESDWDLRHWRLN SDWYSHUWINDWpLLHWX
 PLãND inLR PLQLVWHULMRV P YDVDULR G ³VDNIPX 1U
 3DVWDED 'XRPHQ\V SDWHLNWL UHPLDQWL 3LHQR VXSLUNLPRãDOWDQDQYãĒP,9R;Q/ãĒDB5D



äDOLR SLHQR VXSLUNLPDV Lã /LHWXYRV SLHQR JDPLQWRMD

| | | | | | | | | | | | | |
|-----------------------------------------|---|-------|--------|-------|------|-----|-------|-------|--------|-------|------|-----|
| äDOLR SLHQR VXSLUNLPDV SDJDO WLHN | V | UXJSM | UXJVIM | VSDOL | PiQH | PHW | VSDOL | UXJSM | UXJVIM | VSDOL | PiQH | PHW |
|-----------------------------------------|---|-------|--------|-------|------|-----|-------|-------|--------|-------|------|-----|

1DWIUDODXV ULHEXPR SLHQDV

| | | | | | | | | | | | | |
|-------------------------------------------------------------|--|--|--|--|--|--|--|--|--|--|--|--|
| ä ìNLQLQNÐ LU äHLPRV ìNLÐ QHWDLNDQW QXRVNDLWÐ | | | | | | | | | | | | |
| ,ä äHPiV ìNLR EHQGURYLÐ LU ³PRQLÐ QHWDLNDQW QXRVNDLWÐ | | | | | | | | | | | | |
| 6XSLUNWD Lã YLVR QHWDLNDQW QXRVNDLWÐ | | | | | | | | | | | | |
| 6XSLUNWD Lã YLVR WDLNDQW QXRVNDLWÐ | | | | | | | | | | | | |
| %HQGUDV NLHNLV | | | | | | | | | | | | |
| 9LGXWLQi NDLQD | | | | | | | | | | | | |

%DJLQLÐ URGLNOLÐ SLHQDV

| | | | | | | | | | | | | |
|--------------------------------------|--|--|--|--|--|--|--|--|--|--|--|--|
| ä ìNLQLQNÐ LU äHLPRV ìNLÐ | | | | | | | | | | | | |
| ,ä äHPiV ìNLR EHQGURYLÐ LU ³PRQLÐ | | | | | | | | | | | | |
| %HQGUDV NLHNLV | | | | | | | | | | | | |
| 9LGXWLQi NDLQD | | | | | | | | | | | | |

3DVWDERV QDWIUDODXV ULHEXPR SLHQDV VXSLUNWDV Lã /LHWXYRV SLHQR JDPLQWRMD
 ULHEXPR EDOW\PLQJXPR PiQ ULHEXPR EDOW\PLQJXPR PiQ
 SDWHLNWL SDJDO 3LHQR VXSLUNLPR LU SDUGDYLRP PiQHVL R DWDVNDLW 36
 9LGXWLQi VYHUWLQi /LHWXYRV SLHQR JDPLQWRMDPV PRNiWD NDLQD EH 390
 O\JLQDQW P VSDOLR PiQ VX UXJVIMR PiQ
 O\JLQDQW P VSDOLR PiQ VX P VSDOLR PiQ
 EDJLQLÐ URGLNOLÐ SLHQDV ULHEXPDV ±XRWDV EDOW\PLQJXPR P VYRGLNDSB DWN DUM LQW
 PLãND ìNLR PLQLVWHULMRV P YDVLDR PiQ G ³VDN\PX 1U
 ² YLGXWLQi V VYHUWLQi V VXSLUNLPR NDLQR LU EHQUR VXSLUNLPR NLHNLV DSVNDLpL
 SLHQR VNLUWR SHUGLUEWL ³PRQLÐ YLGXMH YHUWi EHL NLHNLV äDOWLQLV äÈ,.9& /äÈ035,

äDOLR SLHQR LPSRUWDV ³ /LHWXY Lã NLWÐ (6 äDOLÐ

| | | | | | | |
|---------------------------------------------------------------------------------------|---|-------|--------|-------|------|-----|
| äDOLR SLHQR LPSRUWDV ³ /LHWXY Lã NLWÐ (6 äDOLÐ SLHQR VXSLUNLPR LU SHUGLUEWL ³PRQLÐ | V | UXJSM | UXJVIM | VSDOL | PiQH | PHW |
|---------------------------------------------------------------------------------------|---|-------|--------|-------|------|-----|

1DWIUDODXV ULHEXPR SLHQDV

| | | | | | | |
|----------------------------------------------|-------------------------|---|--|--|--|--|
| 9LGXWLQi LPSRUWXRWDV NLHNLV Lã NLWÐ (6 äDOLÐ | | | | | | |
| 9LGXWLQLV ULHEXPDV | | | | | | |
| 9LGXWLQLV EDOW\PLQJXPDV | | | | | | |
| %HQGUDV LPSRUWXRWDV NLHNLV Lã NLWÐ (6 äDOLÐ | | | | | | |
| ,ä WR VNDLpLDXV | | | | | | |
| Lã /D | NLHNLV | W | | | | |
| | YLGXWLQi NDLQD 85 W | | | | | |
| | YLGXWLQLV ULHEXPDV | | | | | |
| | YLGXWLQLV EDOW\PLQJXPDV | | | | | |

%DJLQLÐ URGLNOLÐ SLHQDV

| | | | | | | |
|------------------------------------------------------------------------------|--|--|--|--|--|--|
| %HQGUDV LPSRUWXRWDV NLHNLV Lã NLWÐ (6 äDOLÐ | | | | | | |
| 9LGXWLQi LPSRUWXRWDV NLHNLV Lã NLWÐ (6 äDOLÐ | | | | | | |
| O\JLQDQW P VSDOLR PiQ VX UXJVIMR PiQ P VSDOLR PiQ | | | | | | |
| VYHUWLQi EDOW\PLQJXPDV | | | | | | |
| EDJLQLÐ URGLNOLÐ SLHQDV ULHEXPDV ±XRWDV EDOW\PLQJXPR P VYRGLNDSB DWN DUM LQW | | | | | | |
| PLãND ìNLR PLQLVWHULMRV P YDVLDR PiQ G ³VDN\PX 1U | | | | | | |
| 'XRPHQi SDWHLNWL SDJDO 36 3LHQR VXSLUNLPR LU SDUGDYLRP PiQHVL R DWDVNDLW | | | | | | |

äDOWLQLV äÈ,.9& /äÈ035,



.DL NXULÐ SLHQR JDPLQLÐ YLGXWLQ;V VDYDLWLQ;V NDLQRV JDPLQWRMÐ (6

| *DPLQ\V | 9DOVW\iVDY | VDY | VDY | VDY | VDY | VDY | 3RN\WLV |
|--------------------------------|-----------------------|-----|-----|-----|-----|-----|-----------|
| | ± | ± | ± | ± | ± | ± | VDYDLW\WÐ |
| LāIDVXRWDV OXLWDLV | WDLV | | | | | | |
| LāIDVXRWDV ³ PDāHVQHV IDVXRWHV | WDLV | | | | | | |
| LāIDVXRWDV OXLWDLV | WDLV | | | | | | |
| LāIDVXRWDV OXLWDLV | WDLV | | | | | | |
| LāIDVXRWDV SR | ± SURF | | | | | | |
| LāIDVXRWDV SR | UHE J | | | | | | |
| LāIDVXRWDV OXLWDLV | WDLV | | | | | | |
| LāIDVXRWDV SR | 9RNLHWLMD | | | | | | |
| , UilāLV | 3UDQFIJLMD | | | | | | |
| LāIDVXRWDV OXLWDLV | %HOJLMD | | | | | | |
| UPLQLV | ,WDOLMD | | | | | | |
| LāIDVXRWDV OXLWDLV | 1\GHUODQGDL | | | | | | |
| LāIDVXRWDV OXLWDLV | WDLV | | | | | | |
| LāIDVXRWDV SR | 6ORYDNLMD | | | | | | |
| LāIDVXRWDV OXLWDLV | WDLV | | | | | | |
| LāIDVXRWDV SR | yHNLMD | | | | | | |
| LāIDVXRWDV OXLWDLV | WDLV | | | | | | |
| LāIDVXRWDV ³ PDāHVQHV IDVXRWHV | /HQNLM | | | | | | |
| ES vidutinē kaina | | | | | | | |
| LāIDVXRWDV OXLWDLV | NLOP;V āDOLV | | | | | | |
| \$QJOLMD | | | | | | | |
| LāIDVXRWDV ³ PDāHVQHV IDVXRWHV | NLOP;V āDOLV \$QJOLMD | | | | | | |
| LāIDVXRWDV ³ PDāHVQHV IDVXRWHV | NLOP;V āDOLV \$LULMD | | | | | | |
| ES vidutinē kaina | | | | | | | |
| LāIDVXRWL SR | /DWYLMD | | | | | | |
| LāIDVXRWL SR | 9RNLHWLMD | | | | | | |
| LāIDVXRWL SR | 3UDQFIJLMD | | | | | | |
| LāIDVXRWL SR | %HOJLMD | | | | | | |
| LāIDVXRWL SR | 1\GHUODQGDL | | | | | | |
| LāIDVXRWL SR | yHNLMD | | | | | | |
| LāIDVXRWL SR | 6ORYDNLMD | | | | | | |
| LāIDVXRWL SR | /HQNLM | | | | | | |
| ES vidutinē kaina | | | | | | | |
| LāIDVXRWL SR | -XQJWLQ; .DUDO\W; | | | | | | |
| LāIDVXRWL SR | 9RNLHWLMD | | | | | | |
| LāIDVXRWL SR | 3UDQFIJLMD | | | | | | |
| LāIDVXRWL SR | %HOJLMD | | | | | | |
| LāIDVXRWL SR | 1\GHUODQGDL | | | | | | |
| LāIDVXRWL SR | yHNLMD | | | | | | |
| LāIDVXRWL SR | /HQNLM | | | | | | |
| ES vidutinē kaina | | | | | | | |
| LāIDVXRWL SR | 9RNLHWLMD | | | | | | |
| LāIDVXRWL SR | 1\GHUODQGDL | | | | | | |
| LāIDVXRWL SR | yHNLMD | | | | | | |
| LāIDVXRWL SR | /HQNLM | | | | | | |
| ES vidutinē kaina | | | | | | | |
| LāIDVXRWL SR | -XQJWLQ; .DUDO\W; | | | | | | |
| *RXGD | | | | | | | |
| 7LOVLW | /LHWXYD | | | | | | |
| .LHWLHML LOJDL | EUDQGLQWL | | | | | | |
| (GDP | (VWLMD | | | | | | |
| (GDP | /DWYLMD | | | | | | |
| &KHGGDU | | | | | | | |
| (PPHQWDO SURRN\HWLMD | | | | | | | |
| 3DUPLJLDQR | | | | | | | |
| *UDQD 3DGDQR | | | | | | | |
| 3URYRORQH | | | | | | | |
| 3URYRORQH &UHP,RODLMD | | | | | | | |
| *RUJRQJROD | | | | | | | |
| ,WDOLFR | | | | | | | |
| 7DOHJJLR | | | | | | | |

OHQWHO;V W VLQ\V



SVO OHQWHOĭV W VLQĭV

| *DPLQĭV | 9DOVWĭEĭVDY | VDY | VDY | VDY | VDY | VDY | 3RN\WLV | | |
|-----------------|--------------------|-----|-----|-----|-----|-----|----------|-----|---|
| | | | | | | | VDYDLWĭW | PHW | W |
| (GDP | 6ORYDNLMD | | | | | | | | |
| (GDP - SURF | V P | | | | | | | | |
| (GDP SURF V | PHNLMD | | | | | | | | |
| (PPHQWDO ± SURF | V P | | | | | | | | |
| *RXGD ± SURF | V P | | | | | | | | |
| (GDP | | | | | | | | | |
| *RXGD | | | | | | | | | |
| &KHGGDU | | | | | | | | | |
| (PPHQWDO | /HQNLMD | | | | | | | | |
| 6ĭULDL | | | | | | | | | |
| ORĭDUHOOD | | | | | | | | | |
|)HWD | | | | | | | | | |
| 3HOĭVLQLDL | | | | | | | | | |
| Cheddar | | | | | | | | | |
| Edam | <i>ES vidutinė</i> | | | | | | | | |
| Gouda | <i>kaina</i> | | | | | | | | |
| Emmental | | | | | | | | | |
| &KHGGDU NLOPĭV | âDOWLQJOLMD | | | | | | | | |
| &KHGGDU NLOPĭV | âDOWLQJULMD | | | | | | | | |

*NDLQRV XâVLHQLR YDOVWĭEĭVH (85 SDWHNLNRVSDJDO DWLWLQNDPRV GDWRV (&% YDO
 O\JLQDQW P VDYDLW VX VDYDLWH
 O\JLQDQW P VDYDLW VX P VDYDLWH
 ± QiUD GXRPHQĖ " ± NRQiGHQFLDOĭV GXRPHQĭV
 /LHWXYRV GXRPHQĭV SDWHLNWL UHPLDQWLV 3LHQR JDPLQLĖ SDUGDYLPR VDYDLWĭV DWD
 âDOWLQLDL äĖ,.9& /âĖ035,6 (., \$0, /9\$(, (. 6=,) L

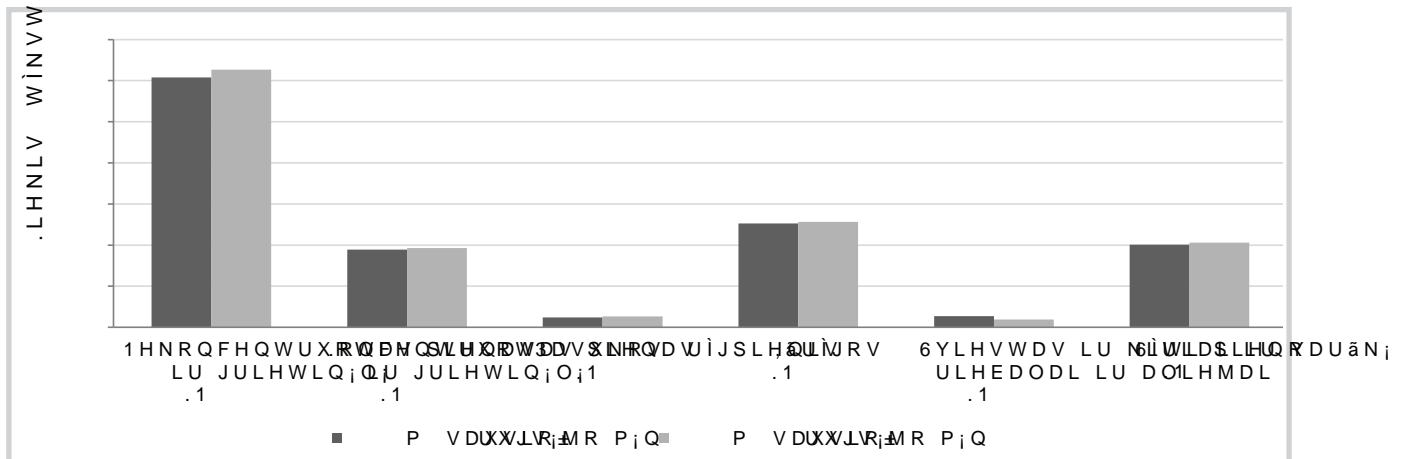
.DL NXULĖ /LHWXYRV ³PRQiVH SDJDPLQWĖ SLHQR JDPLQLĖ 35ĖNYLGXWLQ

| *DPLQLR SDYDGLERVH GLUHNWĭY (%) | /LHWXYRV>ULQNRMHWĖ (6 YDOVWĭEĭV LU WUHPLĖ | | | | | | | | | | |
|------------------------------------|-------------------------------------------|-----|-----|-----|-----|-----|-----|-----|-----|-----|-----|
| | VDY | VDY | VDY | VDY | VDY | VDY | PHW | VDY | VDY | VDY | PHW |
| 6YLHVW DV OXLWDRV | | | | | | | | " | " | " | " |
| ULHEXP R IDVXRWDV | " | | | | | | | " | " | " | " |
| 6ĭULDL | | | | | | | | | | | |
| *RXGD | | | | | | | | " | " | " | " |
| 7LOVLW | | | | | | | | " | " | " | " |
| .LHWLHML LOJD L EUDQGLQWL | | | | | | | | | | | |

VYHUWLQiV JDPLQLĖ QWRMĖQĖH 39P VDYDLWQDQW VDYDLWHVDYDLW VX P VDYDLW
 " ± NRQiGHQFLDOĭV GXRPHQĭV âDOWLQLV äĖ,.9& /âĖ035,

W

3LHQR JDPLQLĖ HNVS RUWDV Lâ /LHWXYRV WĭNVW W



âDOWLQLV 67'



3LHQR VXSLUNLPDV Lã SLHQR JDPLQWRMØ RL P;Q /DWYLMRMH
 PRNDPD NDLQD P VDXVLR±VSDØER /H;QNLMRMH SDGLG;MR
 9² äHP;V ĪNLR LQIRUPDFLMRV LãSDGPRRYHUVSURRFHQWUR
 WYDUNRPRV 3LHQR DSVNDLWRV LãE;R;P;B;L;Q;G;X;R;P;M;Q;H;P;L;R;W P
 WROLDX ± äĒ,.9& 3\$,6 GXRPHQLPLV SD;Q;Y;L;G;H;V;L;Q;W;R;G;D;X;J;L;D;X;V;L
 SLHQR VXSLUNLPR ³PRQ;V W;R;Q;Q;D;D;V;X;S;L;X;U;N;L;P;R;W;Ī;N;V;W;W
 ³PRQ;V P VDXVLR±VSDOLSLHPQ; D;J;E;D SURF YLVR Lã
 SLHQR JDPLQWRMØ VXSLUNR JDPLQWRMØ WXSYLLGNKWR QSIRHQR 3
 SURF ULHEXPRLU EDOW\RLQD;P;R;S;D;H;Q;R;W;D;U;S;L;X; SLHQ
 P VDXVLR±VSDOLRW;P;N;W;W;± WĪN;V;W;W;D;U;E;D SURF .L
 YLGXWLQLR SURF ULHEXPRLH;S;L;H;Q;R;D;P;R;Q;W;R;M;Ø; VXSLUNWR S
 VDXVLR±VSDOLR P;Q; ± WĪM;N;W;W;W;Y;S;D;G;W;L;Q;M;R;L; VX;SL;H;Q;R;
 SURF ULHEXPRLHQR 3DO\JIPQWDXWL;R;±;V;S;D;O;L;R;P;M;Q;N;W;W;X;P;D;
 VDXVLR±VSDOLR P;Q; SLHQR D;U;E;D;U;N;L;S;D;R;F;V;X;P;D;M;R
 SURF DUE;D WĪN;V;W;W;3;H;Ē,.9&P3\$V;S;D;O;L;R;P; O;D;S;N;U;L;P;L
 P;Q; EXYR VXSLUNWD W;G;X;R;P;H;Q;L;P;L;H;Q;R;G;D;U;E;D;X; N;D;L;S;W;U
 SURF GDXJLDX QHL P VSDØURFP;Q; EXYR VXSLUNWD Lã ³
 äĒ,.9& 3\$,6 GXRPHQLPLV ± Lã \$LHQR JDPLQWRMØ ,ã YLV
 VSDØ;L;R; VXSLUNLPR ³PRQLD;S;I;M;D;Q;R;D;M;P;L;S;W;R;Q;R;P;M;D;P;L;Q;W;R;M;Ø; N;X
 PRN;W;D;Y;L;G;X;W;L;Q;Ī; IDNWLQ;Ī; ED;J;L;Q;L;D;U;R;G;D;N;L;Q;L;D;X;S;D;H;Q;R; SURF
 NDLQD VX SULHGDLV LU QX;S;L;H;Q;R;W;R;P;R;F; ±;W;R;S;L;D;X;Ī;M;D;P;V;S;D;U
 IDNWLQ;Ī; ED;J;L;Q;L;D;U;R;G;L;N;O;L;D;J;D;P;L;Q;W;R;M;Ø;D;O;N;X;Q;X;D;V;X;ã;L;X;V;Q;X;R;
 P VSDØ;L;R; SDGLG;MR SURF S;U;R;F;X;G;D;G;P;U;R; SLHQR JDPLQW
 (85 W 3DO\JLQXV VX PYL;X;ã;L;M;D;R;P;P;Q;W;D; 'D;X;J;L;D;X;V;L;D;N;D;
 IDNWLQH ED;J;L;Q;L;D;U;R;G;L;N;O;L;D;N;D;L;Q;R;S;L;H;Q;R;Y;R;D;P;L;Q;W;R;M;Ø;L;N;X;U
 P;D;ã;H;V;Q;Ī; P;H;W;D; 3LHQR JDPLQWRM;D;L;Y;U;H;V;
 äĒ,.9& 3\$,6 GXRPHQLPLV SURF NDUYLD -DXQLHML SLH
 VSDØ;L;R; YLGXWLQ;Ī; QD;W;Ī;U;D;O;D;X;N;P;ã;L;X;S;U;R;E;U;I;P;H;E;K;P;R;O;D;L;N;R; S;U
 LU SURF EDOW\PLQJXPR S;N;D;H;Q;R;S;H;X;S;N;W;N;D;L;P;R;O;N;D;L;Q;D;U;Y;L;D; ±
 /LHWXYRMH SDO\JLQWLP;Q;X;ã;L;ã;P;P;H;W;N;D;L;R;X;P;R;Q;M;R;H
 SDGLG;MR SURF LU VLHN;Ī; äĒ,.9&8\$V6 GXRPHQLPLV NDUY
 SDO\JLQWL VX P VSDOLR P;Q; P;M;V;E;X;V;I;R;±;V;S;D;Ø;R;P;Q; SDO\
 GLGHVQ;Ī;ã;L;D;P;H;W;D;VSDOLR P;Q;P;V;O;D;L;N;R;P;L;Q;W;S;L;X;D;P;X;P;D;ã;M;R
 PRN;W;D;Y;L;G;X;W;L;Q;Ī; QD;W;Ī;U;D;O;D;X;N;D;U;L;P;H;E;X;P;R; SLHQR;R;N;D;I;S;Q;D;I;Q;R;S;D;U
 \UD;GL;G;ã;L;D;X;V;L;D;L;P;D;Q;W;Q;X;R;\$Q;D;P;O;L;Y;S;D;O;D;D;Q;W;P;Ī;S;L;H;Q;R;L;S;D;U;G;D;Y;L;P;
 P VSDOLR P;Q; O;D;L;N;R;P;D;N;D;U;Y;L;D;V;N;D;L;P;L;D;P;D;W;\W
 6WDPELHPV SLHQR JDPLQW;R;M;D;P;D;X;V;S;D;U;P;X;P;ã;M;R;Lã;Ī;N;L;D;N;X;U
 WLHPV GDXJLDX NDLS Wã;D;O;D;B;Y;S;D;H;Q;R;S;L;H;Q;R;P;R;Q;S;L;H;Q;R;N;L;H;N;
 SLHQR VXSLUNLPR ³PRQ;V P± VSDOL;L;R;V;P;Q;H;V;P;X;ã;D;X;V;L;R;±;V;S;D;O;L;
 QD;W;Ī;U;D;O;D; SLHQ S;U;R;F;U;L;H;E;X;P;R;F;L;U;R; ± NDUYLD;O;D;L;N;D;
 EDOW\PLQJXPR PRN;MR(85;W;X;V;S;D;O;L;G;N;I;G;D;P;R; SLHQR S;U;R;F;L;V;E;N;X;D;
 3HU;P;Q;H;V;³;ã;L;SL;H;Q;R;S;U;R;F;L;Q;D;S;D;N;X;L;G;Ī;M;R;V;H;O;D;L;N;R;P;D; LU;G;D;X;J;L;D;X;
 UXJV;MR;P;Q;ML;EXYR (85;S;L;H;Q;R;D;N;L;Q;L;D;V;S;D;O;L;G;Ī;M;R;W;SURF;
 SLHQR NDLQD VWDPELHPV SLHQR JDPLQW;R;M;D;P;R;V;S;D;O;L;P;R;P;Q;L;N;I;
 VSDOLR P;Q;SDGLG;MR SURF LU;E;X;V;E;X;V;L;R;±;V;S;D;O;L;R;P;Q;
 P UXJV;MR;P;Q; ± (85;W;E;N;L;Q;L;D;J;Y;Y;Q;D;U;H;J;L;V;W;U;R;WR
 (XURSRV .RPLVLMRV äHP;V;E;R;S;L;R;G;K;B;P;N;Q;L;P;R;V P O;D;S;N;
 SO;Ī;W;U;R;V;J;H;Q;H;U;D;O;L;Q;L;R;GL;U;H;N;W;R;V;U;R;M;R;E;X;ã;B;Q;N;W;H;W;L;Q;W;D;K;R;W;D;
 GXRPHQLPLV (XURSRV 6;M;X;Q;J;R;M;L;V;ã;D;L;ã;V;H;D;U;Y;L;D;P;± SURF;P;D;ã;
 VSDOLR P;Q;PRN;W;D;Y;L;G;X;W;L;Q;Ī;P;N;D;L;N;R;P;ã;W;Q;D;S;U;Ī;D;O;D;H;Q;D;V;V;X;S;
 SLHQ;V;L;H;(8;5;W;LU;S;D;O;J;L;Q;W;D;P;L;Q;W;R;M;Ø;N;X;U;L;H;O;D;L;N;R;
 VSDOLR P;Q;EXYR SURF G;G;D;G;V;Q;Ī;N;\$Q;R;D;H;Ī;S;B;M;D;P;L;Q;W;R;SL;H;Q;R;
 O;D;L;N;R;W;D;U;S;L;X;Y;L;G;X;W;L;Q;Ī;Q;D;W;Ī;U;D;O;D;P;W;S;D;H;Q;R;X;R;G;S;P;O;N;D;B;E;D;D;W;
 NDLQD /DWYLMRMH VLHN;Ī; Y;D;S;W;R;W;L;H;Q;N;L;M;R;M;H; ±
 (85;W;(V;W;L;M;R;M;H; ± (85;W;LU;S;D;O;J;L;Q;X;V; 3LHQR;D;S;V;N;D;L;W;R;



3LHQR JDPLQWRMÐ LU NDUYLÐ VNDLþLXV LU VXSLUNWR SLHQR NLHNL

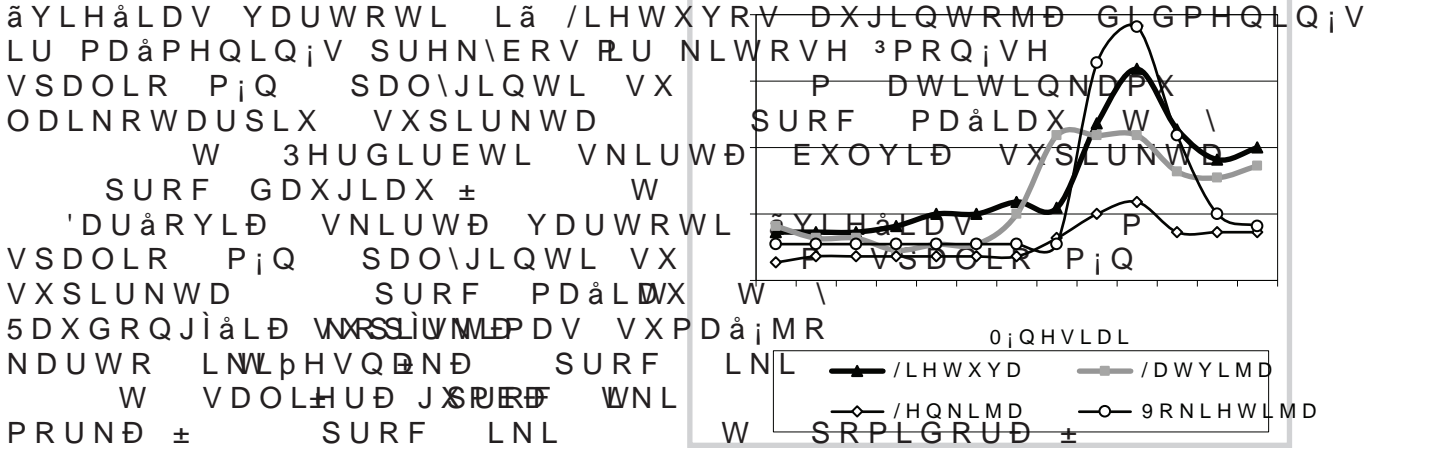
| 6DYLYDOG\i | *DPLQWRMÐ VLHNXV6XSLHQR MÐ VXSLUNWR VXLQWLQLV NDUYLÐ | VXSLUN;MDPV VNDLþLXVSLHQRNLHNLV W VNDLþLXV YQW |
|--------------------|------------------------------------------------------|------------------------------------------------|
| \$NPHQ;V U VDY | | |
| \$O\WDXV U VDY | | |
| \$Q\NãþLÐ U VDY | | |
| %LUãWRQR VDY | | |
| %LUâÐ U VDY | | |
| 'UXVNLQLQNÐ VDY | | |
| (OHNWU;QÐ VDY | | |
| ,JQDOLQRV U VDY | | |
| -RQDYRV U VDY | | |
| -RQLãNLR U VDY | | |
| -XUEDUNR U VDY | | |
| .DLãLDGRULÐ U VDY | | |
| .DOYDULMRV VDY | | |
| .DXQR P VDY | | |
| .DXQR U VDY | | |
| .DJQÐ 5ĪGRV VDY | | |
| .HOP;V U VDY | | |
| .ODLS;GRV U VDY | | |
| .UHWLQJRV U VDY | | |
| .XSLãNLR U VDY | | |
| .;GDLQLÐ U VDY | | |
| /DJGLMÐ U VDY | | |
| 0DULMDPSRO;V U VDY | | |
| 0DãHLNLÐ U VDY | | |
| 0RO;WÐ U VDY | | |
| 3DJ;JLÐ VDY | | |
| 3DNUXRMR U VDY | | |
| 3DQHY;ãLR U VDY | | |
| 3DVYDOLR U VDY | | |
| 3OXQJ;V U VDY | | |
| 3ULHQÐ U VDY | | |
| 5DGYLOLãNLR U VDY | | |
| 5DVHLQLÐ U VDY | | |
| 5LHWDYR VDY | | |
| 5RNLãNLR U VDY | | |
| 6NXRGR U VDY | | |
| 7DXUDJ;V U VDY | | |
| 7HOãLÐ U VDY | | |
| 7UDNÐ U VDY | | |
| 8NPHUJ;V U VDY | | |
| 8WHQRV U VDY | | |
| 9DU;QRV U VDY | | |
| 9LONDYLãNLR U VDY | | |
| 9LOQLDXV U VDY | | |
| =DUDVÐ U VDY | | |
| ãDNLÐ U VDY | | |
| ãDOþLQLQNÐ U VDY | | |
| ãLDXOLÐ U VDY | | |
| ãLODO;V U VDY | | |
| ãLOXW;V U VDY | | |
| ãLUYQLQWÐ U VDY | | |
| ãYHQþLRQLÐ U VDY | | |
| ,ã YLVR | | |

ãDOWLQLV äĒ,.9& 3\$,6 ± 3LHQR DSVNDLWRV



%XOYLD GDUåRYLD LU YDLVLD ULQN

P VSDOLR PjQ /LHWXYRMDXOEYOYGDWLOiV NDLQRV *augintoju*
 GDUåRYLD åYLHåLDP YDUWRMLPXL LåLHPHWVHVSQUNWVDH ±
 PDåLDX R REXROLD ± GDXJLDX



NDUWR LNLPHVQND SURF W VDOLHUÐ JSDR WNL
 SURF LNLEXURNiWLD ±
 LNL W DJXUND ±
 EDOWDJiåLD NRSiVWDL LNLW
 VYRJIQÐ SURF LNL
 ± SURF LNL NLQLQWÐ NRSiVWDL EXROLD åLHPHW EXYR VXSLU
 SURF LNL WPRODGDGDiMRDLN %UDANXSUNLPDV EX
 LU ODSNRWLQLD VDOLHUÐ VXSLUNLPDV GLGHVQLV LU VXGDUi
 SURF LNL W LU SURF LNL /LHWXYRMD åLHPHW Gi
 1DJULQ;MDPX ODLNRWDUSLX åDQXPåLD åDUåRYLD EXYR JD
 VXSLUNLPDV MXPDiMR NDUWR WLNLRV JLHUR GHUOLDXV 7DpLD
 W ODSLQLD SHWUDåROLD LU OHLWQJBNLRUDV åGiMLPR PH
 7DpLD åORXV VXSLUNWD VSDOLR PjQ EXYR GLGHVQLV QH
 WYRJIQÐ åDLåNSURF GDXJLDXSDW GHUOLXV EXYR PDåDV
 W SDUGXRWXYiVH MDX UXGHQ³ SHUN
 3LHYDJUWENLUWÐ YDUWRWL åYLHåLQV REXROLD SUHNERV WL
 VSDOLR PjQ SDO\JLQWL VX XåWHNWLWENLNL YDVLUR PjQ

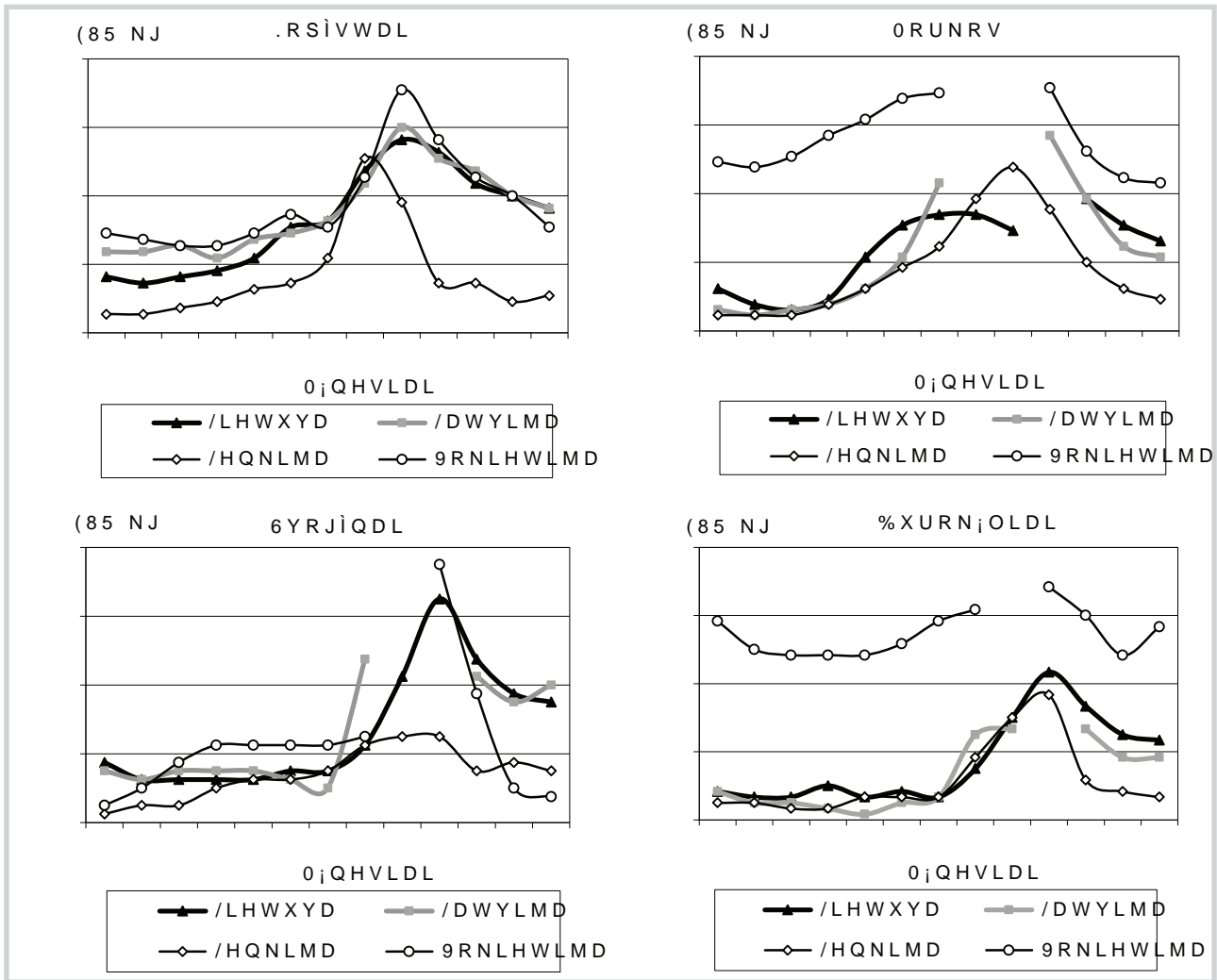
%XOYLD GDUåRYLD LU REXROLD YLGXWLQ;V SDUGDYLP NDLQRV /L (85 NJ EH 390

| 3URGXNFLMD | VDY ± | | | | 3RN\WLV | | | |
|--------------------------|---------|------|-------|------|--------------|------|------|------|
| | 'DWDY ± | | VDY ± | | VDYDLW;VPHWÐ | | | |
| | PLQ | PDNV | VPLQ | PDNV | VPLQ | PDNV | VPLQ | PDNV |
| %XOY;V | | | | | | | | |
| 0RUNRV QHSODXWRV | | | | | | | | |
| 0RUNRV SODXWRV | | | | | | | | |
| 0RUNRV VNXVWRV | | | | | | | | |
| %DOWDJiåLDL NRSiVWDL | | | | | | | | |
| .LQLQLDL NRSiVWDL | | | | | | | | |
| %URNROLDL | | | | | | | | |
| %XURNiOLDL | | | | | | | | |
| 6YRJIQDL | | | | | | | | |
| 3RUDL | | | | | | | | |
| 6YRJIQÐ ODLåNDL | | | | | | | | |
| 6DORWRV YQW | | | | | | | | |
| 3ULHVNRQLQ;V åROHO;V YQW | | | | | | | | |
| ,OJDYDLVLDL DJXUNDL | | | | | | | | |
| 3RPLGRUDL | | | | | | | | |
| 5DXJLQWL NRSiVWDL | | | | | | | | |
| 5DXJLQWL DJXUNDL | | | | | | | | |
| 2EXROLDL | | | | | | | | |

EXOYLD LU GDUåRYLD NDLQD VNLUWXP OHPLD NRN\i; SUHNLQLV SDUXRåLPDV SDWHLN
 O\JLQDQW P VDYDLW VX VDYDLWH O\JLQDQW åDOWLQV åDåV.9\$ /åE035,



'DUåRYLÐ YLGXWLQ;V NDLQRV *augintoju* /LHWXYRMH LU NLWRVH



NDLQRV XåVLHQLR YDOVWİE;VH (85 SDWHLNWR RåD SVDLQDDLW Bİ, L QND/PåE V 3S DWR/0\$((& % = 0

3HUGLUELPR ³PRQ;VH P YLGXWLQ;V NDLQRV ULQNRMH
 SDO\JLQWL VX P GDU SDOYLDL LP;Q DP YDUWRMLPXL SDVWRYLD
 VXSLUNLPDV SDGLG;MR QHW J\YSLRPR LWHPSXL LU QRULQW PD
 å³ SDGLG;MLP O;P; QHW W SYLRFWXN MH JDPLQDQW PDLVW
 SDGLG;MURN;OLD VXSLUNLPDV SDULXRDWODU;RNXPXRWD SURGXN
 VXSLUNLPDV PRLPND;MRSURLNLU VXSHUNDPL EXURN;OLD NLHN
 W VYRJİQDSURL W XSLUNLPDV SHUGLUELPLXW P
 EDOWDJİåLD ±NRSİVWDL LNL WDL W P MDX EXYR VXSLUNWD
 ³YDLULÐ NLWÐ GDU NDRWLD LNL VXSLUNLPDV SHUGLUELPLXW GDU
 2EXROLD VNLUWÐ SHUGLUEWL XåVLHåLDP YDUWRMLP
 NDUWR PDåLDX W VXSLUNLPDV åYLHåLDP YDUWRMLP
 %XURNİOLD VXSLUNLPDV SHUGLUEWL EXURN;OLD XW RNDNWD P
 GLG;MD QHV SHUGLUEWL EXURN;OLD XW RNDNWD P
 åDOWLQLV åE,.9& /åE035,

%XOYLD GDUåRYLÐ LU REXROLD VXSLUNLPR Lå /LHWXYRV DXJLQWRM

| 3URGXNFLMD | VSDOLV UXJSMİWLW XJV;MLV VSDOLV P;QHVL R PHWÐ | 3RNİWL V |
|----------------------|-----------------------------------------------|----------|
| %XOY;V | | |
| %DOWDJİåLDL NRSİVWDL | | |
| 0RUNRV | | |
| %XURNİOLDL | | |
| 6YRJİQDL | | |
| 2EXROLDL | | |

O\JLQDQW P VSDOLR P;QJLQDQW JV;MR P;Q VX åDOWLQD R;P;Q /åE035,
 " ± NRQ;GHQFLDOİV GXRPHQİV



%XOYLD GDUåRYLD SLHYDJU\ELD YDLVLÐ LU XRJD VXSLUNL
äYLDLDP YDUWRMLPXL NDLQRV (85 NJ EH 390

| 3URGXNFLMD | 0DåPHQLQ;VLGPHQLQ;V.LWRVH | | | 9LGXWLQ;NDLQD | | | 9LGXWLQ;VNDLQR | | |
|------------------------|---------------------------|----------|----------|---------------|----------|---------|----------------|------|--|
| | SUHN\ERV | 3URQ\ERV | 3PRQ\RVH | YLVRVH | 3PRQ\RVH | SRN\WLV | PiQHVL | RHWÐ | |
| %XOY;V | | | | | | | | | |
| %DOWDJiåLDL NRSiVWDL | | | | | | | | | |
| 5DXGRQJiåLDL.NRSiVWDL. | | | | | | | | | |
| 0RUNRV | | | | | | | | | |
| %XURN;OLDL | | | | | | | | | |
| 0ROLiJDL | | | | . | . | | | | |
| \$JXUNDL | | | | | | | | | |
| 3RPLGRUDL | | | | . | . | - | | | |
| ýHVQDNDL | | | | | | | | | |
| 6YRJiQDL | | | | | | | | | |
| 6YRJiQÐ ODLåNDL | | | | . | | . | | | |
| 3RUDL | | | | | . | | | | |
| /DSNRWLQLDL VDOLHUDL | | | | . | . | . | | | |
| /DSLQ;V SHWUDåRO;V | | | | | | | | . | |
| .UDSDL | . | . | | . | | . | | | |
| 6DORWRV | | | | . | . | . | | | |
| %DOWLHML SLHYDJU\ELDL | | | | . | . | | | | |
| 5XGLHML SLHYDJU\ELDL | | | | - | - | - | | | |
| 2EXROLDL | | . | | . | | | | | |
| %UDåN;V | | . | . | . | - | - | - | | |

O\JLQDQW P VSDOLR P;Q\Q\WJ;MR P;Q VSDOLR P;Q VX åDOWLQDQD P;Q /åE035,
" ± NRQ;GHQFLDOiV GXRPHQ\V

%XOYLD GDUåRYLD LU YDLVLÐ NDLQRV /HQNLMRV GLGPHQLQ;V SUHN\

| 'DUåRY;V YDLVLDL | 'DWD | | | | 3RN\WLV | |
|-----------------------|-----------------|---------|---------|---------|---------|------|
| | PLQ | PDNVPLQ | PDNVPLQ | PDNVPLQ | PDNVPLQ | PDNV |
| %XOY;V | | | | | | |
| 0RUNRV | | | | | | |
| %XURN;OLDL | | | | | | |
| 6YRJiQDL | | | | | | |
| 5DXGRQLHML VYRJiQDL | | | | | | |
| %DOWDJiåLDL NRSiVWDL | | | | | | |
| 5DXGRQJiåLDL NRSiVWDL | | | | | | |
| .LQLQLDL NRSiVWDL | | | | | | |
| 6DYRMRV NRSiVWDL | | | | | | |
| åLHGLQLDL NRSiVWDL | | | | | | |
| %URNROLDL | | | | | | |
| 6DOLHUDL | | | | | | |
| åDNQLQ;V SHWUDåRO;V | | | | | | |
| 3RUDL | | | | | | |
| 7UXPSDYDLVLDL DJXUNDL | | | | | | |
| 3RPLGRUDL ± PP | | | | | | |
| 3RPLGRUDL ± PP | | | | | | |
| 3RPLGRUDL ± PP | | | | | | |
| 5DXGRQD SDSULND | | | | | | |
| åDOLD SDSULND | | | | | | |
| *iåLQ;V VDORWRV | | | | | | |
| 'HVHUWLOLDL | *DOD PP | | | | | |
| REXROLDL | *ROGHQ 'HOLF PP | | | | | |
| | GDUHG PP | | | | | |
| | /LJRO PP | | | | | |
| | åDPSLRQ PP | | | | | |
| 2EXROLDL SHUGLUELPXL | | | | | | |
| .ULDxå;V .RQIHUHQFMD | | | | | | |

± DXJLQWRMÐ DUED SUHN\ELQLQND YLGXWLQ; NDLQD 3YDLULXR;DOWLQ;V DUNHWRQ
O\JLQDQW VX
YQW NDLQD



ODLVWR SURGXNWÐ PDåPHQLQ; ULQND

äHP;V ÌNLR LU PDLVWR SURGXNWÐ YLGXWLQ;V NDLQRV /LHWXYR
± P ODSNULþLR P;Q SUDGåLRMH (85 PDW YQW

| 3URGXNWÐV | | 0DWDYLRP | 3RN\WL | |
|------------------------------|--------------------------------------------------|-------------|--------|-------|
| | | YLHQ | U\SVL | U\SVL |
| *HULDPDVLV SLHQBXP | WHWUDSDNH | O | | |
| SDVWHULJXRWDV | SODVWLNLQLDPH | PDLO\HO\MH | | |
| | ULHEXP | O | | |
| *HULDPDVLV±SLHQDLHXP | WHWUDSDNH | O | | |
| DSCRURWDV±8\$7 ULHEXP | WHWUDSDNH | O | | |
| .HI\UDV | ULHEXP | NJ | | |
| | SODVWLNLQLDPH | PDLO\HO\MH | | |
| *ULHWLQ; ULHEXP± J SDNXRW;MH | | NJ | | |
| 9DUãN;V V;ULV | ULHEXP | NJ | | |
| | ULHEXP | NJ | | |
| 6YLVWWDV | ULHEXP | NJ | | |
| 7HSXVLV ULHEDD | QHGDXJLDXNDLS | J SDNXRW;MH | | |
| PLãLQV | ULHEDD | NJ | | |
| | ULHEXP± J SDNXRW;MH | NJ | | |
| 9DUãN; OLHVD | | NJ | | |
| | *RXGD | NJ | | |
|)HUPHQWLQDLHVMHMLDL | | NJ | | |
| | 7LOVLW | NJ | | |
| | NXPVLV EH NDXOR | NJ | | |
| .LDXOLHQDãRQLQ; EH NDXOR | | NJ | | |
| | VPXONLQWD | NJ | | |
| 9LãWLHQD | NHWYLUþLDL | NJ | | |
| | EURLOHULV | NJ | | |
| 9LãWÐ NLDXãã | NDWHJRULMRV | YQW | | |
| | NDWHJRULMRV | YQW | | |
| 6LON;V | QHLãGDULQ;WRV VX JDOYRPLW;V;WRV | | | |
| | ãO; V;U\PH | NJ | | |
| -;ULQ;V O;ãã | QHLãGDULQ;WRV EH JDOYÐ | NJ | | |
| 0HQN;V ;O;ãã | ããDOG\WD | NJ | | |
| | HNWUD U;ã±HMJ SDNXRW;MH | NJ | | |
| .YLHWLQLDL | PLãWDL ± NJ SDNXRW;MH | NJ | | |
| | DXNãPLDXVLãVNJ SDNXRW;MH | NJ | | |
| | U;ãLHV %±) NJ SDNXRW;MH | NJ | | |
| 'XRQD | WDPVL | NJ | | |
| | ãYLHVL | NJ | | |
| | EDWRQDV | NJ | | |
| 5\ãLDL | SOLN\WL | NJ | | |
| *ULNLÐ NUXRSRV | | NJ | | |
| 0DQÐ NUXRSRV | | NJ | | |
| 0DNDURQDL | | NJ | | |
| &XNUXV | | NJ | | |
| %XOY;V | OLHWXYLãNRV QDXMR GHUOLDXV QHSODXWRV YLVÐ NODVLÐ | | | |
| | LPSRUWXRWRV QDXMR GHUOLDXV QHSODXWRV YLVÐ NODVLÐ | | | |
| 0RUNRV | OLHWXYLãNRV QDXMR GHUOLDXV SODXWRV YLVÐ NODVLÐ | | | |
| | LPSRUWXRWRV QDXMR GHUOLDXV SODXWRV YLVÐ NODVLÐ | | | |
| %DOWDJ;ãL | OLHWXYLãNL QDXMR GHUOLDXV YLVÐ NODVLÐ | | | |
| NRS;VWDL | UDXJLQWL | NJ | | |
| | WUXPSDY LPSRUWXRWL YLVÐ NODVLÐ | | | |
| \$JXUNDL | LOJDYDLV OLHWXYLãNL YLVÐ NODVLÐ | | | |
| | LPSRUWXRWL YLVÐ NODVLÐ | | | |
| 3RPLGRUDL | OLHWXYLãNL YLVÐ NODVLÐ | NJ | | |
| | LPSRUWXRWL YLVÐ NODVLÐ | NJ | | |
| 6YRJ;QDL | OLHWXYLãNL JHOWRQLHML YLVÐ NODVLÐ | | | |
| | LPSRUWXRWL JHOWRQLHML YLVÐ NODVLÐ | | | |
| ýHVQDNDL | OLHWXYLãNL YLVÐ NODVLÐ | NJ | | |
| | LPSRUWXRWL YLVÐ NODVLÐ | NJ | | |
| 2EXROLDL | LPSRUWXRWL YLVÐ NODVLÐ | NJ | | |
| *HULDPDVLV QHJQãW | QHJQãW DV EH SULHGÐ | O | | |
| \$OLHM XV | UDSVÐ | O | | |
| | VDXO;JU åÐ | O | | |
| 0HG XV | QDW;UDOXV VWLNOLQLDPH LQãHO\MH | | | |
| 'UXVND | EH SULHGÐ | NJ | | |
| | MRGXRW | NJ | | |

OHQWHO;V W VLQ;V



SVO OHQWHO;V W VLQ\V
 O\JLQDQW P ODSNULpLR P;Q VX VSDOLR P;Q
 /LHWXYRMH SDVNHOEWXV NDUDQWLQ GiO &29,' ULJLNRV NDLQÐ UHJLVWUDYLPDV NDLF
 0DLVWR SURGXNWÐ DSUDäDV JHULDPDVLV SLHQDV ± EH SULHGÐ NYDSQLÐMÐ PHGáLDJ
 LQGHOMH YDUän;V ViULV ± EH SULHGÐ NP\QÐ GáLRYLQWÐ YDLVLÐ LU NW VXSDNXRV
 SRSLHULXMH WHSXVLV ULHEDÐ PLáLQ\V ± ODPLQXRWDPH DUED SHUJDPHQWLQQLDPH S
 NYDSLÐMÐ PHGáLDJÐ GDáLNOLÐ ± J ODPLQXRWDPH SRSLHULXMH DUED SODVWLNQ
 DUED QHVXSDNXRWL NLDXOLHQD ± äYLHáLD DWáDOG\WD VXSDNXRWÐ DUED QHVXSDNX
 YLáPLXNDV EURLOHULV XääDOG\WDV VXSDNXRWÐV YLáWÐ NLDXáLQQLDL ± YQW UXG
 O\GHNRV PHQ;V ;O; ± VXSDNXRWV NYLHWLQQLDL PLOWDL ± SRSLHULQ;MH SDNXRW;M
 SRSLHULQ;MH DUED SODVWLNQ;MH SDNXRW;MH UáLDL ± SOLN\WL EH VSHFLDOLÐ SUL
 SRSLHULQ;MH DUED SODVWLNQ;MH SDNXRW;MH PDQÐ NUXRSRV ± SRSLHULQ;MH DUED
 SODVWLNQ;MH SDNXRW;MH FXNUXV ± SRSLHULQ;MH DUED SODVWLNQ;MH SDNXRW;MH
 YHLVO;V VXSDNXRWL DUED QHVXSDNXRWL JHULDPDV YDQGXR ± O SODVWLNQQLDPH E
 SRSLHULQ;MH SDNXRW;MH
 3DVWDERV NDLQRV NDLPR YLHWRYLÐ SDUGXRWXY;VH UHJLVWUXRMDPRV HLQDPRMR P;
 SDUGXRWXY;VH UHJLVWUDYLPXL QHQDXGRMDPRV DNFLMLQ;V NDLOÐ YHUW;V
 aDOWLQLV äE0,35&6 /

äHP;V ÌNLR LU PDLVWR SURGXNWÐ YLGXWLQ;V NDLQRV /LH
 ± P ODSNULpLR P;Q SUDGáLRMH (85 PDW YQW

| 3URGXNWDV | ODWDYLPR | 3RN\WLV |
|--------------------------------------------------------|-----------------------------|---------|
| *HULDPDVLV QDWSLHODDQXV ULHEXPR äYLHáODV NDUYLÐ SLHQDV | | |
| *ULHWLQ; QDWIUODOXV ULHEXPR | O | |
| 6YLHVWDV EH DXJDOLQ;V NLOP;V ULHEDNOÐ | | |
| 9DUän; QDWIUODOXV ULHEXPR | NJ | |
| 9DUän;V V QDWIUODOXV ULHEXPR | NJ | |
| | UÌN\WL ODáLQQLDL | NJ |
| | äYLHáL ODáLQQLDL | NJ |
| .LDXOLHQD NXP SLV EH NDXOR | NJ | |
| | VSUDQGLQ; EH NDXOR | NJ |
| | QXJDULQ; EH NDXOR | NJ |
| -DXWLHQD NXP SLV EH NDXOR | NJ | |
| | QXJDULQ; EH NDXOR | NJ |
| 9HUáLHQD NXP SLV EH NDXOR | NJ | |
| 9LáWLHQD LāGDULQ;WD QHSDGDOLQWÐN; JDEDOXV | | |
| \$QWLHQD LāGDULQ;WD QHSDGDOLQWÐN; JDEDOXV | | |
| .DODNXWLHNDWLQ;O;V | NJ | |
| 9LáWÐ NLDQáLQQLQWL QHUHJLVWUXRMDV YLáWÐ DXJLQWRMÐ | | |
| 6ÌG\WRV V QHNDLQ;WRV VX JDOYRPLV | | |
| 6LONLÐ ;O;X RGD ViU\PH | NJ | |
| -iULQ;V O\GHNRV O\GHNRV WRV EH JDOYÐ | NJ | |
| 0HQN;V ;O;XääDOG\WD | NJ | |
| .DUSLDL SDVNHUVWL | NJ | |
| .DUáLDL DWáDOG\WL LāGDULQ;WL VNXJDOYRPLV | | |
| 6WHUNDL DWáDOG\WL LāGDULQ;WL VNXJDOYRPLV | | |
| 0HGXV QDWIUODOXV | NJ | |
| %XOY;V OLHWXYLāNRV QDXMR GHUOND;V YLGXWLQLR G\GáLR | | |
| %XURN;OLDLHWXYLāNL | NJ | |
| 0RUNRV OLHWXYLāNRV QDXMR GHUOND;V QHSODXWRV | | |
| %DOWDJiáDLHWXYLāNL QDXMR GHUOND;V | | |
| NRSiVWDL UDXJLQWL | NJ | |
| áLHGLQLDLONR;XWLāNL | NJ | |
| \$JXUNDL WUXPSDYDLVLDL OLHWXYLāNL | | |
| 3RPLGRUDL OLHWXYLāNL YLGXWLQLR G\GáLR | | |
| | LPSRUWXRWL YLGXWLQLR G\GáLR | |
| 6YRJiQDL OLHWXYLāNL YLGXWLQLR G\GáLR | | |
| | LPSRUWXRWL YLGXWLQLR G\GáLR | |
| ýHVQDNDL OLHWXYLāNL YLGXWLQLR G\GáLR | | |
| 2EXROLDL OLHWXYLāNL YLGXWLQLR G\GáLR | | |
| | LPSRUWXRWL YLGXWLQLR G\GáLR | |

O\JLQDQW P ODSNULpLR P;Q VX VSDOLR P;Q
 /LHWXYRMH SDVNHOEWXV NDUDQWLQ GiO &29,' ULJLNRV NDLQÐ UHJLVWUDYLPDV NDLF
 0DLVWR SURGXNWÐ DSUDäDV JHULDPDVLV SLHQDV ± SLOVWRPDV DUED SODVWLNQQLDPH
 QHVXSDNXRWV YDUän; YDUän; ViULV ± EH SULHGÐ NYDSQLÐMÐ PHGáLDJ
 DWáDOG\WD VYHULDPD QHVXSDNXRW MDXWLHQD ± äYLHáLD DWáDOG\WD VYHULDPD
 DQWLHQD ± äYLHáLD QHVXSDNXRW NDODNXWLHQRV NuiWLQ;O; ± äYLHáLD QHVXSDNX
 VLONLÐ ;O; ± QHVXSDNXRW MiULQ;V O\GHNRV PHQ;V ;O; DWODQWLQ;V ODáLáRV N
 PHGXV ± SODVWLNQQLDPH DUED VLNOLQQLDPH LQGHOMH EXOY;V PRUNRV EXURN;OL
 SRPLGRUDL VYRJiQDL þHVQDNDL ± QHVXSDNXRW REXROLDL ± EHW NRNLRV YHLVO;V
 3DVWDERV NDLQRV WXUJDYLHW;VH UHJLVWUXRMDPRV HLQDPRMR P;QHVLR SLUP M³ LU D
 SUDáRPDENLQÐODLQÐ
 aDOWLQLV äE0,35&6 /



3LHQR SURGXNWÐ YLGXWLQ;V PDâPHQLQ;V NDLQRV /LHWXYRV GLG

| 3URGXNWÐV | | | 0DWDYL PR YQW | 9LGXWLQ; VYHUWLQ; NDLOD (85 PDW YQW 3RNWLV) | VDYDYLQ;HPLRWÐ | VDYDYLQ;HPLRWÐ | VDYDYLQ;HPLRWÐ |
|---------------------------------------|-----------------------------------------------------------------------------------------------|----------------------------------------------------------------------------------------------|-----------------------|------------------------------------------------------------|----------------|----------------|----------------|
| | | | | | VDYDYLQ;HPLRWÐ | VDYDYLQ;HPLRWÐ | VDYDYLQ;HPLRWÐ |
| | | | | | VDYDYLQ;HPLRWÐ | VDYDYLQ;HPLRWÐ | VDYDYLQ;HPLRWÐ |
| *HULD SLHQDV | SDVWHULJXRWD EH SULHGÐ ULH NYDSLDMÐ PHGãLDJÐ &D YLWDPLOD LU SDQ O SDNXRW;MH | WHWUDSDNH SODVWLNQLQDPH PDLãHO\MH WHWUDSDNH ULHEXP SODVWLNQLQDPH PDLãHO\MH | O O O O O | EH DNFLMÐ EH DNFLMÐ EH DNFLMÐ DNFLQ; EH DNFLMÐ | | | |
| .HI\UDV | ULHEXP ± NJ SDNXRW;MH | SODVWLNQLQDPH PDLãHO\MH WHWUDSDNH WHWUDSDNH | NJ NJ | EH DNFLMÐ DNFLQ; EH DNFLMÐ DNFLQ; | | | |
| *ULHWLQ; ± | ULHEXP ULHEXP | ± J SROLVWLUHQRLQGHOMH | NJ NJ | EH DNFLMÐ DNFLQ; EH DNFLMÐ DNFLQ; | | | |
| 9DUãn VIULV | EH SULHGÐULHEXP GãLRYLQWÐ YDLVLÐULHEXP | VXSDNXRWÐV ULHEXP | NJ N | EH DNFLMÐ DNFLQ; EH DNFLMÐ DNFLQ; | | | |
| -RJXUWÐV | QDWIUDQXV\UXV JHULDP VX SULHGDLV GLHWLQ;3 | ± J SROLVWLUHQRLQGHOMH | NJ N | EH DNFLMÐ DNFLQ; EH DNFLMÐ DNFLQ; | | | |
| 6YLHVWÐV | ULHEXP | | NJ | EH DNFLMÐ DNFLQ; | | | |
| 7HSXV ULHEDÐ PLãLQ | QH GDXJLQX NDLS ODPLQXRWDPH DXXJDOLQLÐ ULHEDÐ | J SHUJDPHQWLQQLDPH SRSLHULXMH | NJ | EH DNFLMÐ DNFLQ; | | | |
| 6DOGLQWÐV VXWLUãWUQWEXPR SLHQDV | ULHEXP ULHEXP | ± J SODVWLNQLQDPH PDLãHO\MH | NJ N | EH DNFLMÐ DNFLQ; EH DNFLMÐ DNFLQ; | | | |
| 9DUãn | EH SULHGÐ OLHVD | ± J SODVWLNQLQDPH PDLãHO\MH | NJ N | EH DNFLMÐ DNFLQ; EH DNFLMÐ DNFLQ; | | | |
|)HUPHQ WLQLV | *RXGD QHVXSMDXVW\WÐV ULHNHO;PLV ULHWÐVLV QHVXSMDXVW\WÐV ULHNHO;PLV | | NJ N | EH DNFLMÐ DNFLQ; EH DNFLMÐ DNFLQ; | | | |
| 7LOQHVXSMDXVW\WÐV ULHNHO;PLV | | | NJ | EH DNFLMÐ | | | |

3DXNãWLHQRV SURGXNWÐ LU NLDXãLQLÐ YLGXWLQ;V PDâPHQLQ;V NDLQR

| 3URGXNWÐV | | | 0DWDYL PR YQW | 9LGXWLQ; VYHUWLQ; NDLOD (85 PDW YQW 3RNWLV) | VDYDYLQ;HPLRWÐ | VDYDYLQ;HPLRWÐ | VDYDYLQ;HPLRWÐ |
|--------------------------------------|-----------------------------------------------|----------------------------------------------|------------------|------------------------------------------------|----------------|----------------|----------------|
| | | | | | VDYDYLQ;HPLRWÐ | VDYDYLQ;HPLRWÐ | VDYDYLQ;HPLRWÐ |
| | | | | | VDYDYLQ;HPLRWÐ | VDYDYLQ;HPLRWÐ | VDYDYLQ;HPLRWÐ |
| 9LãWLHQRV NHWYLUPLDL | DWY;VLQWL | | NJ | EH DNFLMÐ | | | |
| 9LãPLXNDV YLãPLXNDV | DWY;VLQWÐV QHVXSMDXVW\WÐV | | NJ | EH DNFLMÐ DNFLQ; | | | |
| 9LãWLHQRV NUIWLQ;O;V | ãYLHãLRV | QHVXSMDXVW\WÐV | NJ | EH DNFLMÐ | | | |
| .DODNXWLHQRV NUIWLQ;O;V | ãYLHãLRV | | NJ | EH DNFLMÐ | | | |
| 1DUYXR VH / ODLNR PÐ NLDXãLQLÐ | NDWHJRULSDNXRWL YLãWÐ DLNDWHJRULSDNXRWL | 3 SRSEHUHQ DUED SODVWLNQLQHV SDNXRWLHV | NJ N | EH DNFLMÐ DNFLQ; EH DNFLMÐ | | | |



0iVRV SURGXNWÐ YLGXWLQ;V PDâPHQLQ;V NDLQRV /LHWXYRV GLGÅ

| 3URGXNWDV | | | 0DWDYL PR YQW | 9LGXWLQ; VYHUWLQ; NDLQD (85 PDW YQW 3RINWLV) | VDYDR;V;H;PLRWÐ | *** | **** |
|-------------|----------------|------------------------|------------------|-------------------------------------------------|-----------------|-----|------|
| | | | | | VDYVDYVDYVDY* | | |
| .LDXOLHåUD | HåUD DwadoG | NXPSLV VX NDXOX | NJ | EH DNFLMÐ DNFLQ;V | | | |
| | | NXPSLV EH NDXOR NXRW | NJ | EH DNFLMÐ DNFLQ;V | | | |
| | | QXJDULQ; EH NDXOR NJ | NJ | EH DNFLMÐ DNFLQ;V | | | |
| | | ãRQLQ; EH NDXOR | NJ | EH DNFLMÐ DNFLQ;V | | | |
| | | VPXONLQWD | NJ | EH DNFLMÐ DNFLQ;V | | | |
| | | NXPSLV VX NDXOR NXRW | NJ | EH DNFLMÐ DNFLQ;V | | | |
| *DOYLMHåUD | HåUD DwadoG | NXPSLV EH NDXOR | NJ | EH DNFLMÐ DNFLQ;V | | | |
| | | QXJDULQ; EH NDXOR NXRW | NJ | EH DNFLMÐ DNFLQ;V | | | |
| | | NXPSLV VX NDXOR NXRW | NJ | EH DNFLMÐ DNFLQ;V | | | |
| 'HåUD | HåUD | NLDXOLHåUD | NJ | EH DNFLMÐ DNFLQ;V | | | |
| | | MDXWLHåUD | NJ | EH DNFLMÐ DNFLQ;V | | | |
| | | YLãWLHåUD | NJ | EH DNFLMÐ DNFLQ;V | | | |
| | | DXNãPLDXVLRV | NJ | EH DNFLMÐ DNFLQ;V | | | |
| | | UIãLHV | NJ | EH DNFLMÐ DNFLQ;V | | | |
| 0iVRV NRQVH | HåUD | WURãNLQWD | NJ | EH DNFLMÐ DNFLQ;V | | | |
| | | WURãNLQWD | NJ | EH DNFLMÐ DNFLQ;V | | | |

%XOYLD GDUãRYLD LU YDLVLÐ YLGXWLQ;V PDâPHQLQ;V NDLQRV /LHWXYRV

| 3URGXNWDV | | | 0DWDYL PR YQW | 9LGXWLQ; VYHUWLQ; NDLQD (85 PDW YQW 3RINWLV) | VDYDR;V;H;PLRWÐ | *** | **** |
|-----------------|------|------------------|------------------|-------------------------------------------------|-----------------|-----|------|
| | | | | | VDYVDYVDYVDY* | | |
| %XOYi | HåUD | OLHWXYLãNL | NJ | EH DNFLMÐ DNFLQ;V | | | |
| | | GHUOLDXV | NJ | EH DNFLMÐ DNFLQ;V | | | |
| %XURNi | HåUD | QDFLRQDOLQ;V NRW | NJ | EH DNFLMÐ DNFLQ;V | | | |
| | | OLHWXYLãNL | NJ | EH DNFLMÐ DNFLQ;V | | | |
| | | YLUWL | NJ | EH DNFLMÐ DNFLQ;V | | | |
| 0RUNR | HåUD | QDFLRQDOLQ;V NRW | NJ | EH DNFLMÐ DNFLQ;V | | | |
| | | OLHWXYLãNL | NJ | EH DNFLMÐ DNFLQ;V | | | |
| %DOWNRSiV | HåUD | QDFLRQDOLQ;V NRW | NJ | EH DNFLMÐ DNFLQ;V | | | |
| | | GHUOLDXV | NJ | EH DNFLMÐ DNFLQ;V | | | |
| 7UXPSD | HåUD | YDLVLÐ | NJ | EH DNFLMÐ DNFLQ;V | | | |
| | | DJXUNDL | NJ | EH DNFLMÐ DNFLQ;V | | | |
| .OJDYDLVLÐL | HåUD | OLHWXYLãNL | NJ | EH DNFLMÐ DNFLQ;V | | | |
| | | DJXUNDL | NJ | EH DNFLMÐ DNFLQ;V | | | |
| 3RPLGRUDL | HåUD | OLHWXYLãNL | NJ | EH DNFLMÐ DNFLQ;V | | | |
| | | LPSRUWXRWL | NJ | EH DNFLMÐ DNFLQ;V | | | |
| 3DSULNRXGRQVLRV | HåUD | OLHWXYLãNL | NJ | EH DNFLMÐ DNFLQ;V | | | |
| | | YLUWL | NJ | EH DNFLMÐ DNFLQ;V | | | |
| 6YRJiQDL | HåUD | QDFLRQDOLQ;V NRW | NJ | EH DNFLMÐ DNFLQ;V | | | |
| | | OLHWXYLãNL | NJ | EH DNFLMÐ DNFLQ;V | | | |
| JHOWRQTHM | HåUD | GHUOLDXV | NJ | EH DNFLMÐ DNFLQ;V | | | |
| | | YLUWL | NJ | EH DNFLMÐ DNFLQ;V | | | |
| ýHVQDL | HåUD | PSRUWXRWL | NJ | EH DNFLMÐ DNFLQ;V | | | |
| | | QDFLRQDOLQ;V NRW | NJ | EH DNFLMÐ DNFLQ;V | | | |
| 2EXROLDL | HåUD | OLHWXYLãNL | NJ | EH DNFLMÐ DNFLQ;V | | | |
| | | *ROGHQ | NJ | EH DNFLMÐ DNFLQ;V | | | |
| %DQDQDL | HåUD | YLUWL | NJ | EH DNFLMÐ DNFLQ;V | | | |



*UİĞĐ SURGXNWĐ YLGXWLQ;V PDâPHQLQ;V NDLQRV /LHWXYRV GLGâL

| 3URGXNWĐV | | | 0DWDYL PR YQW | 9LGXWLQ; VYHUWLQ; NDLQD (85 PDW YQW 3RIN\WLV | VDYDR;V;H\PLRWĐ | VDYVDYVDYVDY* | *** | **** |
|----------------------|---------------------------|-------------------------------|------------------|-------------------------------------------------|-----------------|---------------|-----|------|
| .YLHWLQLDL PLOWDL | HNWUD UİãLHV %±) | ± NJ SRSLHULQ;MH | NJ | EH DNFLMĐ | | | | |
| | | SDNXRW;MH | NJ | EH DNFLMĐ | | | | |
| | DXNãPDXVLRV UİãLHV %±) | ± NJ SRSLHULQ;MH | NJ | EH DNFLMĐ | | | | |
| | | SDNXRW;MH | NJ | DNFLQ;I | | | | |
| 'XRQD äYLHVL | WDPVL | EH VSHFLDOLD | NJ | EH DNFLMĐ | | | | |
| | | SULHGĐ | NJ | DNFLQ;I | | | | |
| | EDWRQDV | GãLRYSRSLHU Q;MH DUEĐ | NJ | EH DNFLMĐ | | | | |
| | | YDLVLĐ SODVWLNLQ;MH SDNXRW;MH | NJ | DNFLQ;I | | | | |
| 5\ãLDL | EH VSHFLDOLD | SODVWLNLQ;MH DUEĐ | NJ | SODVWLNLQ;MH | | | | |
| | | SDNXRW;MH | NJ | EH DNFLMĐ | | | | |
| | VSDJHPLDL | SODVWLNLQ;MH SDNXRW;MH | NJ | EH DNFLMĐ | | | | |
| | | IRUPLQLDL LU NW | NJ | DNFLQ;I | | | | |
| *ULNLĐ NUXRSRV | OHVNDOG\WRV | | NJ | EH DNFLMĐ | | | | |
| | | | NJ | DNFLQ;I | | | | |
| | 0DQĐ NUXRSRV | | NJ | EH DNFLMĐ | | | | |
| | | | NJ | EH DNFLMĐ | | | | |
| \$YLãLQ;V NUXRSRV | SRSLHULQ;MH DUEĐ | SODVWLNLQ;MH | NJ | EH DNFLMĐ | | | | |
| | | SDNXRW;MH | NJ | EH DNFLMĐ | | | | |
| | 0LHãLQ;V NUXRSRV | | NJ | EH DNFLMĐ | | | | |
| | | | NJ | EH DNFLMĐ | | | | |
| 3HUOLQ;V NUXRSRV | | NJ | EH DNFLMĐ | | | | | |
| | | NJ | EH DNFLMĐ | | | | | |
| 6NDOG\WL ãLUQLDL | | NJ | EH DNFLMĐ | | | | | |

ãXYĐ SURGXNWĐ YLGXWLQ;V PDâPHQLQ;V NDLQRV /LHWXYRV GLGâL

| 3URGXNWĐV | | | 0DWDYL PR YQW | 9LGXWLQ; VYHUWLQ; NDLQD (85 PDW YQW 3RIN\WLV | VDYDR;V;H\PLRWĐ | VDYVDYVDYVDY* | *** | **** |
|-----------------------------|----------------------|-------------------|------------------|-------------------------------------------------|-----------------|---------------|-----|------|
| -iULQ;V OİGãLNDOG\WRV | HNWUD UİãLHV %±) | SODVWLNLQ;MH DUEĐ | NJ | EH DNFLMĐ | | | | |
| | | PDLãHO\MH | NJ | DNFLQ;I | | | | |
| \$WODQWLQ;V OİGãLNDOG\WRV | HNWUD UİãLHV %±) | QHVXSDNXRW;MH | NJ | EH DNFLMĐ | | | | |
| | | | NJ | DNFLQ;I | | | | |
| 0HQN;V ãOİGãLNDOG\WD | HNWUD UİãLHV %±) | SODVWLNLQ;MH DUEĐ | NJ | EH DNFLMĐ | | | | |
| | | PDLãHO\MH | NJ | DNFLQ;I | | | | |
| .DUSLDL | SDVNHUUVWL | | NJ | EH DNFLMĐ | | | | |
| | | | NJ | DNFLQ;I | | | | |
| 6İG\WRV VL | OHLãGDULQ;WRV VX | JDOYRPLV | NJ | EH DNFLMĐ | | | | |
| | | | NJ | DNFLQ;I | | | | |
| 6LON;V ãOİGãLNDOG\WD | QDWIUDOL V;V\PH | QHVXSDNXRW;MH | NJ | EH DNFLMĐ | | | | |
| | | VX RGD | NJ | DNFLQ;I | | | | |
| -iULQLDL HãLNDOG\WD | HNWUD UİãLHV %±) | | NJ | EH DNFLMĐ | | | | |
| | | | NJ | DNFLQ;I | | | | |
| 6NXPEU;V | ãDOWDL UİãLHV %±) | VXSDNXRW;MH DUEĐ | NJ | EH DNFLMĐ | | | | |
| | | QHVXSDNXRW;MH | NJ | DNFLQ;I | | | | |
| ãXYĐ NRQVHUYĐDL DOLHMXMH | HNWUD UİãLHV %±) | ± J | NJ | EH DNFLMĐ | | | | |
| | | VNDUGLQ;MH | NJ | EH DNFLMĐ | | | | |
| | VNXPEU;V | SDNXRW;MH | NJ | EH DNFLMĐ | | | | |

.LWÐ PDLVWR SURGXNWÐ YLGXWLQ;V PDâPHQLQ;V NDLQRV /LHWXYRV

| 3URGXNWDV | | ODWDYL PR YQW | 9LGXWLQ; VYHUWLQ; NDLQD (85 PDW YQW 3RIN\WLV | VDYDLW;V\PLRWÐ | VDYDLW;V\PLRWÐ | VDYDLW;V\PLRWÐ | VDYDLW;V\PLRWÐ | VDYDLW;V\PLRWÐ |
|----------------|-----------------------------------|----------------------------------------------|-------------------------------------------------|----------------|----------------|----------------|----------------|----------------|
| &XNUX | SRSLHULQ;MH DUED SODVWLN | NUQ;MH SDN | XRW;MH | EH DNFLMÐ | | | | |
| *HULD YDQGX | PDVYV QHJD]XRWDV | EH O SODVWLN | CEH DNFLMÐ | | | | | |
| 0DLVW DOLHM | UDSVÐ LQLV XV VDXO;JU åÐ | ± O SODVWLN | CEH DNFLMÐ | | | | | |
| 0HGXV | QDWiUDOXV | SODVWLNQLDPH LQGHO\MH | NJEH DNFLMÐ | | | | | |
| 'UXVND | MRGXRWD EH SULHGÐ | SRSLHULQ;MH DUED SODVWLNQ;MH SDNXRW;MH | NJEH DNFLMÐ | | | | | |

NDLQRV UHJLVWUXRMDPRV 9LOQLDXV .DXQR .ODLS;GRV 3DQHY;âLR âLDXOLD \$O\WD
 8\$% Å1RUIRV PDâPHQD³ 8\$% Å3DOLQN³ LU 8\$% Å5LPL /LHWXYD³ SUHN\ERV WLQNOÐ SDUG
 O\JLQDQW P VDYDLW VX VDYDLWH
 O\JLQDQW P VDYDLW VX VDYDLWH
 O\JLQDQW P VDYDLW VX P VDYDLWH åDOWLQLV äË,.9& /äË035,

âDOWLQLÐ VXWUXPSLQLPDL

\$0\$ ± \$JUDUPDUNW \$XVWULD \$XVWULMD
 \$0, ± \$JUDUPDUNW ,QIRUPDWLRQV 9RNLHWLMD
 (. ± (XURSRV .RPLVLMD
 (., ± (HVWL .RQMXQNWXULLQVWLWXXW (VWLMD
 (85267\$7 ± 7KH 6WDWLWVLFDO2vFH RI WKH (XURSHDQ &RPPXQLWLHV
)\$2 ± -XQJWLQLÐ 7DXWÐ PDLVWR LU âHP;V ÌNLR RUJDQLJDFLMD
 ,*& ± ,QWHUQDWLRQDO *UDLQV &RXQFLO ' %ULWDQLMD
 /'\$ \$ ± /LHWXYRV GDUâRYLÐ DXJLQWRMÐ DVRFLDFLMD
 /9\$(, ± /DWYLM DV 9DOVWV \$JUDUDV (NRQRPLNDV ,QVWLWXWV /DWYI
 /äË.7 ± /LHWXYRV âHP;V ÌNLR NRQVXOWDYLP R WDUQ\ED
 /äË0355\$ ± /LHWXYRV âHP;V ÌNLR LU PDLVWR SURGXNWÐ ULQNRV UHJXO
 /äË035,6 ± /LHWXYRV âHP;V ÌNLR LU PDLVWR SURGXNWÐ ULQNRV LQIRUP
 10\$ ± 1DFLRQDOLQ; PR;MLPR DJHWiUD
 1ä7 ± 1DFLRQDOLQ; âHP;V WDUQ\ED
 6'\$,6 ± 6XSLUN;MÐ GXRPHQÐ DSGRURMLPR LQIRUPDFLQ;V VLVWHPRV
 67' ± /LHWXYRV 6WDWLWVWLNRV GHSDUWDPHQWDV
 9097 ± 9DOVW\ELQ; PDLVWR LU YHWHULQDULMRV WDUQ\ED
 =65,5 ± =LQWHJURZDQ\ 6\VWHP 5ROQLFJHM ,QIRUPDFML 5\QNRZHM /H
 äË,.9& ± 9² âHP;V ÌNLR LQIRUPDFLMRV LU NDLP R YHUVOR FHQWUDV
 äË0 ± /LHWXYRV 5HVSXEOLNRV âHP;V ÌNLR PLQLVWHULMD
 äË5 ± äHP;V ÌNLR UÏPDL
 86'\$ ± 8QLWHG 6WDWHV 'HSDUWPHQW RI \$JULFXOWXUH -\$9

.RSLMDYLPDV DU SXEOLNDYLPDV YLVR OHLGLQLR DU MR GDOLHV EH UDâWLâNR

< Å\$JUR 5,1.\$³ (O SDâWDV DJURULQND#YLF OW
 /HLG;MDV 9² âHP;V ÌNLR LQIRUPDFLMRV KWWS ZZZ YLF OW ULV
 NDLP R YHUVOR FHQWUDV 7LUDâDV HJJ
 9LQFR .XGLUNRV J 9LOQLXV 6SDXVGLQR 9² âHP;V ÌNLR LQIRUPDFLM
 7HO 9LQFR .XGLUNRV J /7 9LOQLXV